

Ribbons

|                        |  |
|------------------------|--|
| Nom De Style           | <b>Rouleaux</b>                                  |
| Numéro De Style        | <b>5A266</b>                                     |
| Construction           | <b>Motif à Plusieurs Niveaux/Boucle De Coupe</b> |
| Fibre                  | <b>Ecosolution Q® Nylon</b>                      |
| Méthode De Teinture    | <b>100% Teint EN Solution</b>                    |
| Endos Primaire         | <b>Synthétique</b>                               |
| Endos Secondaire       | <b>Ultraloc®</b>                                 |
| Traitements Protecteur | <b>Protection Des Sols SSP® Shaw</b>             |

|                                  |                               |                               |
|----------------------------------|-------------------------------|-------------------------------|
|                                  | u.s.                          | metric                        |
| Dimensions Du Produit            | <b>12 ft</b>                  | <b>3.66 m</b>                 |
| Jauge                            | <b>1/11 in</b>                | <b>43.3 per 10 cm</b>         |
| Compte De Mailles                | <b>11.0 per in</b>            | <b>43.0 per 10 cm</b>         |
| Épaisseur Fini                   | <b>0.265 in</b>               | <b>6.73 mm</b>                |
| Densité                          | <b>5977 oz/yd<sup>3</sup></b> | <b>0.221 g/cm<sup>3</sup></b> |
| Kilotex                          |                               | <b>11.02</b>                  |
| Poids De La Fibre Touffetée      | <b>0.420 in</b>               | <b>10.67 mm</b>               |
| Poids De La Fibre Touffetée      | <b>44 oz/yd<sup>2</sup></b>   | <b>1491.9 g/m<sup>2</sup></b> |
| Répéter Le Schéma d'Installation | <b>72 in w x 84 in l</b>      | <b>1.82 m w x 2.13 m l</b>    |



Méthodes d'Installation Conseillées

Direct Glue, Double Glue, Stretch-In

Product is recommended for areas with light to moderate traffic only.

Spécifications Du Rendement + Tests Et Essai

|                                      |  |
|--------------------------------------|--|
| Inflammabilité                       | <b>Pass</b>  |
| Essai Au Panneau Radiant (Astm E648) | <b>Class I</b>   |
| Densité Du Fumée                     | <b>Less Than 450</b>   |
| Statique                             | <b>Less Than 3.5 kv</b>  |
| Label Cri Green Label Plus (Glp)     | <b>GLP2271</b>   |
| Ada Conformité                       | <b>≥0.6, conforme au coefficient de frottement statique pour les surfaces de passage et d'accessibilité simplifiée (ADA).***</b> |

Test Reports may be included or listed by the manufacturing/inventory style number as opposed to the noted selling style number.

Attributs + Certifications

|   |  |
|---|--|
| Health & Wellbeing                      |  |
| Material Ingredient Transparency        | Cradle to Cradle Certified®   Niveau Argent (Version 3.1)<br>NSF 140   or  |
| Indoor Air Quality                      | CRI Green Label Plus (GLP)   GLP2271   |
| Climate Impact                          |  |
| Environmental Product Declaration (EPD) | Certifié Par Une Tierce Partie Conformément Aux Normes ISO 14044,<br>ISO 14025 Et EN 15804   |
| Total Recycled Content                  | <1% (Pre-Consumer <1%   Post-Consumer 0%)  |
| Product Packaging                       | 100% Recyclable  |
| Global Product Assessment               | CE Marking (EN 14041)   Certifié Par Un Tiers<br>Environmental Guarantee*   Re[turn] Reclamation Program*   Pickup &<br>Delivery Available<br>Country of Origin**   Imported |

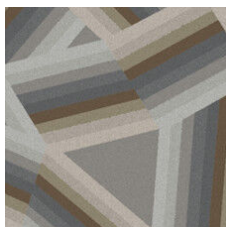
Well V2 Contribution Credit

|   |  |
|---|--|
| X08 Réduction des matières dangereuses Partie 1 : Optimisation des limites des matières dangereuses – 1 pt            | C2C Silver Level (Version 3.1)         |
| X10 Réduction des composés volatils Partie 1 (A) : Gérer l'optimisation des composés organiques volatils (COV) - 1 pt | C2C Silver Level (Version 3.1)         |
| X11 Contrôle des émissions à long terme Partie 2 : Optimisation des revêtements de sol – 1 pt                         | Green Label Plus Certification GLP2271 |
| X13 Enhanced Material Precaution Part 1: Select Optimized Materials Optimization - max 2 pts                          | C2C Silver Level (Version 3.1)         |
| X14 Transparence des matériaux Partie 1 : Promouvoir l'optimisation de la divulgation des ingrédients - max 2 pts     | C2C Silver Level (Version 3.1)         |

Contribution Au Certificat Vert Leed

|   |   |
|---|---|
| « Crédit MR : Divulgateion et optimisation des produits de construction | 3rd Party Certified in Accordance with ISO14044, ISO14025 & EN15804 |
| « Crédit MR : Divulgateion et optimisation des produits de construction | C2C Silver Level (Version 3.1)                                      |
| « Crédit MR : Divulgateion et optimisation des produits de construction | C2C Silver Level (Version 3.1)                                      |
| Crédit EQ : matériaux faibles émissions                                 | Green Label Plus Certification: GLP2271                             |

## Available Colorways



Shine 66155

## Informations Supplémentaires

\* To learn more about the recyclability of our products and our Environmental Guarantee, please visit [shawcontract.com/sustainability](https://shawcontract.com/sustainability).

\*\*Meets or exceeds all local and national regulations in country of manufacture. (Manufactured in an ISO 9001 & ISO 14001 certified facility or equivalent)

\*\*\*This carpet is manufactured to be ADA compliant, but to be fully ADA compliant, the end-user must ensure the carpet is adhered to the floor and installed as outlined in the ADA standards.

[Installation Guidelines](#)

[Maintenance Guidelines](#)

Specifications are subject to nominal manufacturing variance. Material supply and/or manufacturing processes may necessitate changes without notice.

This product is an exclusive design and may not be duplicated in any manner. Use of this design in the creation of another product design is also strictly prohibited.

Visit [shawcontract.com/testing](https://shawcontract.com/testing) for more information.



**PVC-Free**

Corporate Headquarters +1 800 257 7429 | +1 706 532 7984 | Atlanta +1 404 853 7429 | Bengaluru +91 80 6773 0202 | Beijing +86 10 6568 588 | Chicago +1 312 467 1331 | Dubai +971 4 584 6956 | Hong Kong +852 2623 0371 | Latin America (Miami) +1 305 827 5912 | London +44 207 961 4120 | Los Angeles +1 800 233 1614 | Melbourne +61 3 9939 8543 | Mexico City +55 5010 7600 | Mumbai +91 22 6284 5050 | Nantong +86 400 800 7429 | New York +1 212 953 7429 | Paris +33 (0) 1 81 22 44 39 | San Francisco +1 415 955 1920 | Santiago +562 2431 5000 x 550 | São Paulo +55 11 3071 1702 | Shanghai +86 21 3338 4000 | Singapore +65 6733 1811 | Sydney +61 800 556 302