

Join

Product Type	Broadloom	
Style Number	5A268	
Construction	Multi-Level Pattern/Cut Loop	
Fibre	Ecosolution Q® Nylon	
Dye Method	100% Solution Dyed	
Primary Backing	Synthetic	
Secondary Backing	Ultraloc®	
Protective Treatments	SSP® Shaw Soil Protection	
	u.s.	metric
Product Size	12 ft	3.66 m
Gauge	1/11 in	43.3 per 10 cm
Stitches	11.0 per in	43.0 per 10 cm
Average Density	6434 oz/yd³	0.238 g/cm³
Kilotex		11.08
Total Thickness	0.400 in	10.16 mm
Tufted Weight	42 oz/yd²	1424 g/m²
Installation Pattern Repeat	144 in x 144 in	3.66 m x 3.66 m



Recommended Installation Method

Direct Glue, Double Glue, Stretch-In

Data + Testing

Pill Test	Pass
Radiant Panel (Astm E648)	Class I
Nbs Smoke	Less Than 450
Electrostatic Propensity	Less Than 3.5 kv
Cri Green Label Plus (Glp)	GLP2271
Ada Compliance	>0.6, Meets the recommended static coefficient of friction for ADA walking surfaces and accessible routes***

Test Reports may be included or listed by the manufacturing/inventory style number as opposed to the noted selling style number.

Warranties

Lifetime Commercial Limited

Attributes + Certifications

Health & Wellbeing

Material Ingredient Transparency

Cradle to Cradle Certified® | Silver Level (Version 3.1)  
NSF 140 | Gold

Indoor Air Quality

CRI Green Label Plus (GLP) | GLP2271

Climate Impact

Environmental Product Declaration (EPD)

3rd Party Certified in Accordance with ISO14044, ISO14025 & EN15804

Total Recycled Content

<1% (Pre-Consumer <1% | Post-Consumer 0%)

Product Packaging

100% Recyclable

Global Product Assessment

CE Marking (EN 14041) | 3rd Party Certified

Environmental Guarantee\* | Re[turn] Reclamation Program\* | Pickup & Delivery Available

Country of Origin\*\* | USA

Green Leed Contribution Credit

MR Credit: Building Product Disclosure and Optimization  
Environmental Product Declarations - Option 1: Environmental Product Declaration (EPD)

3rd Party Certified in Accordance with ISO14044, ISO14025 & EN15804

MR Credit: Building Product Disclosure and Optimization  
Material Ingredients - Option 1: Material Ingredient Reporting

C2C Silver Level (Version 3.1)

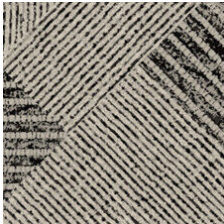
MR Credit: Building Product Disclosure and Optimization  
Material Ingredients - Option 2: Material Ingredient Optimization

C2C Silver Level (Version 3.1)

EQ Credit: Low Emitting Materials  
Option 1: Product Category Calculations

Green Label Plus Certification: GLP2271

Available Colorways



Smoke 68500

Additional Information

\* To learn more about the recyclability of our products and our Environmental Guarantee, please visit [shawcontract.com/sustainability](https://shawcontract.com/sustainability).

\*\*Meets or exceeds all local and national regulations in country of manufacture. (Manufactured in an ISO 9001 & ISO 14001 certified facility or equivalent)

\*\*\*This carpet is manufactured to be ADA compliant, but to be fully ADA compliant, the end-user must ensure the carpet is adhered to the floor and installed as outlined in the ADA standards.

[Installation Guidelines](#)

[Maintenance Guidelines](#)

Specifications are subject to nominal manufacturing variance. Material supply and/or manufacturing processes may necessitate changes without notice.

This product is an exclusive design and may not be duplicated in any manner. Use of this design in the creation of another product design is also strictly prohibited.

Visit [shawcontract.com/testing](https://shawcontract.com/testing) for more information.



PVC-Free