

Ground

Tipo De Producto	Alfombra EN Rollo	
Colección	Canopy	
Número De Estilo	5A289	
Construcción	Patrón Con Bucle Multinivel	
Fibra	Ecosolution Q® Nylon	
Método De Teñido	100% Solution Dyed	
Base Primaria	Sintético	
Base Secundaria	Ultraloc®	
Tratamientos Protectores	SSP® Shaw Protección Para El Piso	
Adhesivo Recomendado	1000 Broadloom 4 Gallon or 3800 Indoor Outdoor Broadloom 4 Gallon	
	u.s.	metric
Tamaño Del Producto	12 ft	3.66 m
Gauge	1/10 in	39.4 per 10 cm
Puntadas	10.5 per in	42.5 per 10 cm
Espesor De La Fibra Terminada	0.146 in	3.71 mm
Densidad Media	5425 oz/yd³	0.201 g/cm³
Kilotex		9.92
Espesor Total	0.285 in	7.24 mm
Peso De La Fibra	22 oz/yd²	745.9 g/m²
Repetición Del Patrón De Instalación	7.2 in x 24 in	18.29 cm w x 60.96 cm l



Método De Instalación Recomendado

Direct Glue, Double Glue, Stretch-In

Datos + Pruebas

Prueba De Pastillas (Pill)	Pass
Panel Radiante (Astm E648)	Class I
Nbs Humo	Less Than 450
Propensión Electrostática	Less Than 3.5 kv
Cri Green Label Plus (Glp)	GLP2271
Ada Compliance	≥0.6, Cumple con las recomendaciones para el coeficiente de fricción estática para superficies transitables ADA y rutas accesibles***

Test Reports may be included or listed by the manufacturing/inventory style number as opposed to the noted selling style number.

Garantías

Vitalicio Limitado A USO Comercial

Productos Que Combinan

Carpet Tile: **Elevate Tile, Balcony Tile, Habitat Tile, Suspend Tile, Above Tile, Preserve Tile, Weathered Tile, Wildwood Tile, Weathered Color Tile**

Broadloom: **Below**

Atributos + Certificaciones

Health & Wellbeing	
Material Ingredient Transparency	<b>Cradle to Cradle Certified®   Nivel Plata (Versión 3.1)</b> <b>Health Product Declaration (HPD)   Divulgado 1,000 ppm</b> <b>NSF 140   Oro</b>
Indoor Air Quality	<b>CRI Green Label Plus (GLP)   GLP2271</b>
Climate Impact	
Environmental Product Declaration (EPD)	<b>Certificado Tercerizado De Acuerdo Con La Norma ISO14044, ISO14025 &amp; EN15804</b>
Total Recycled Content	<b>&lt;1% (Pre-Consumer &lt;1%   Post-Consumer 0%)</b>
Product Packaging	<b>100% Reciclable</b>
Global Product Assessment	<b>CE Marking (EN 14041)   Certificado Tercerizado</b> <b>Environmental Guarantee*   Re[turn] Reclamation Program*   Pickup &amp; Delivery Available</b> <b>Country of Origin**   Imported</b>

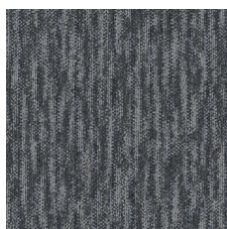
Well V2 Contribution Credit

X08 Hazardous Material Reduction Part 1: Limit Hazardous Materials Optimization – 1 pt	<b>C2C Nivel Plata (Versión 3.1)</b>
X10 Volatile Compound Reduction Part 1 (A): Manage Volatile Organic Compounds (VOCs) Optimization – 1 pt	<b>C2C Nivel Plata (Versión 3.1)</b>
X11 Long Term Emissions Control Part 2: Flooring Optimization – 1 pt	<b>Green Label Plus Certification GLP2271</b>
X13 Enhanced Material Precaution Part 1: Select Optimized Materials Optimization – max 2 pts	<b>C2C Nivel Plata (Versión 3.1)</b>
X14 Material Transparency Part 1: Promote Ingredient Disclosure Optimization – max 2 pts	<b>C2C Nivel Plata (Versión 3.1)</b>

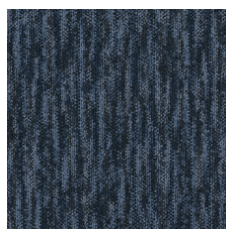
Contribución Para Créditos Leed

Crédito MR: Divulgación y optimización de productos de construcción Declaraciones ambientales de productos - Opción 1: Declaración ambiental de productos (EPD)	<b>3rd Party Certified in Accordance with ISO14044, ISO14025 &amp; EN15804</b>
Crédito MR: Divulgación y optimización de productos de construcción Ingredientes de materiales - Opción 1: Informe de ingredientes de los materiales	<b>C2C Nivel Plata (Versión 3.1)</b>
Crédito MR: Divulgación y optimización de productos de construcción Ingredientes de materiales - Opción 2: Optimización de ingredientes de los materiales	<b>C2C Nivel Plata (Versión 3.1)</b>
Crédito EQ: Materiales de baja emisión Opción 1: Cálculos de categoría de producto	<b>Certificación Green Label Plus: GLP2271</b>

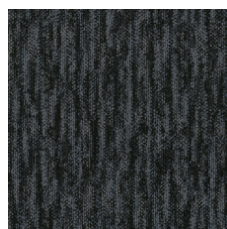
## Available Colorways



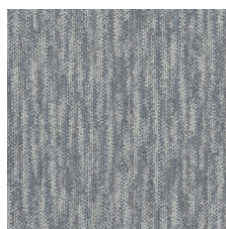
Still 90481



Deep Sky 90485



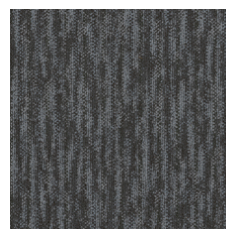
Shadow 90500



Quiet 90535



Path 90555



Shade 90557



Calm 90595



Branch 90761

## Información Adicional

\* To learn more about the recyclability of our products and our Environmental Guarantee, please visit [shawcontract.com/sustainability](https://shawcontract.com/sustainability).

\*\*Meets or exceeds all local and national regulations in country of manufacture. (Manufactured in an ISO 9001 & ISO 14001 certified facility or equivalent)

\*\*\*This carpet is manufactured to be ADA compliant, but to be fully ADA compliant, the end-user must ensure the carpet is adhered to the floor and installed as outlined in the ADA standards.

[Installation Guidelines](#)

[Maintenance Guidelines](#)

Specifications are subject to nominal manufacturing variance. Material supply and/or manufacturing processes may necessitate changes without notice.

This product is an exclusive design and may not be duplicated in any manner. Use of this design in the creation of another product design is also strictly prohibited.

Visit [shawcontract.com/testing](https://shawcontract.com/testing) for more information.



**PVC-Free**

Corporate Headquarters +1 800 257 7429 | +1 706 532 7984 | Atlanta +1 404 853 7429 | Bengaluru +91 80 6773 0202 | Beijing +86 10 6568 588 | Chicago +1 312 467 1331 | Dubai +971 4 584 6956 | Hong Kong +852 2623 0371 | London +44 207 961 4120 | Los Angeles +1 800 233 1614 | Melbourne +61 3 9939 8543 | Mexico City +55 5010 7600 | Mumbai +91 22 6284 5050 | Nantong +86 400 800 7429 | New York +1 212 953 7429 | Paris +33 (0) 1 81 22 44 39 | San Francisco +1 415 955 1920 | Shanghai +86 21 3338 4000 | Singapore +65 6733 1811 | Sydney +61 800 556 302

© 2025 Shaw Industries Group, Inc., a Berkshire Hathaway Company  
April 3, 2025

3 of 3