

Squares

Product Type	Broadloom	
Collection	Classics	
Style Number	5B102	
Construction	Multi-Level Pattern/Cut Loop	
Fibre	Nylon	
Dye Method	100% Solution Dyed	
Primary Backing	Synthetic	
Secondary Backing	Classicbac®	
Protective Treatments	SSP® Shaw Soil Protection	
Recommended Adhesive	1000 Broadloom 4 Gallon, Shaw 1200 or 3800 Indoor Outdoor Broadloom 4 Gallon	
	u.s.	metric
Product Size	12 ft	3.66 m
Gauge	1/10 in	39.4 per 10 cm
Stitches	12.0 per in	47.0 per 10 cm
Finished Pile Thickness	0.180 in	4.57 mm
Average Density	6400 oz/yd³	0.237 g/cm³
Kilotex		11.19
Total Thickness	0.324 in	8.23 mm
Tufted Weight	32 oz/yd²	1085 g/m²
Installation Pattern Repeat	12.0" w x 12.0" l	30.48 cm w x 30.48 cm l



Recommended Installation Method

Direct Glue, Double Glue, Stretch-In

Product should be installed in rooms only applications.

When installing in hybrid locations with carpet and resilient, direct glue with LokSeam is recommended.

Data + Testing

Pill Test	Pass
Radiant Panel (Astm E648)	Class I
Nbs Smoke	Less Than 450
Electrostatic Propensity	Less Than 3.5 kv
Cri Green Label Plus (Glp)	GLP8472
Ada Compliance	>0.6, Meets the recommended static coefficient of friction for ADA walking surfaces and accessible routes***

Test Reports may be included or listed by the manufacturing/inventory style number as opposed to the noted selling style number.

Coordinating Products

Broadloom: **Herringbone, Stripes**

Attributes + Certifications

Health & Wellbeing

Material Ingredient Transparency

Indoor Air Quality

Cradle to Cradle Certified® | Silver Level (Version 3.1)  
NSF 140 | Gold  
CRI Green Label Plus (GLP) | GLP8472

Climate Impact

Environmental Product Declaration (EPD)

Total Recycled Content

Product Packaging

3rd Party Certified in Accordance with ISO14044, ISO14025 & EN15804  
<1% (Pre-Consumer <1% | Post-Consumer 0%)  
100% Recyclable

Global Product Assessment

CE Marking (EN 14041) | 3rd Party Certified  
Environmental Guarantee\* | Re[turn] Reclamation Program\* | Pickup & Delivery Available  
Country of Origin\*\* | USA

Leed Contribution Credit

MR Credit: Building Product Disclosure and Optimization  
Environmental Product Declarations - Option 1: Environmental Product Declaration (EPD)

3rd Party Certified in Accordance with ISO14044, ISO14025 & EN15804

MR Credit: Building Product Disclosure and Optimization  
Material Ingredients - Option 1: Material Ingredient Reporting

C2C Silver Level (Version 3.1)

MR Credit: Building Product Disclosure and Optimization  
Material Ingredients - Option 2: Material Ingredient Optimization

C2C Silver Level (Version 3.1)

EQ Credit: Low Emitting Materials  
Option 1: Product Category Calculations

Green Label Plus Certification: GLP8472

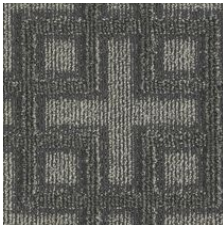
Available Colorways



Camel Hair 03120



Gilded 03250



Pewter 03500



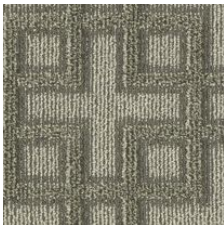
Mirrored 03525



Brushed Nickel 03570



Truffle 03700



Mushroom 03750

## Additional Information

\* To learn more about the recyclability of our products and our Environmental Guarantee, please visit [shawcontract.com/sustainability](https://shawcontract.com/sustainability).

\*\*Meets or exceeds all local and national regulations in country of manufacture. (Manufactured in an ISO 9001 & ISO 14001 certified facility or equivalent)

\*\*\*This carpet is manufactured to be ADA compliant, but to be fully ADA compliant, the end-user must ensure the carpet is adhered to the floor and installed as outlined in the ADA standards.

[Installation Guidelines](#)

[Maintenance Guidelines](#)

Specifications are subject to nominal manufacturing variance. Material supply and/or manufacturing processes may necessitate changes without notice.

This product is an exclusive design and may not be duplicated in any manner. Use of this design in the creation of another product design is also strictly prohibited.

Visit [shawcontract.com/testing](https://shawcontract.com/testing) for more information.



**PVC-Free**

Corporate Headquarters +1 800 257 7429 | +1 706 532 7984 | **Atlanta** +1 404 853 7429 | **Bengaluru** +91 80 6773 0202 | **Beijing** +86 10 6568 588 | **Chicago** +1 312 467 1331 | **Dubai** +971 4 584 6956 | **Hong Kong** +852 2623 0371 | **Latin America (Miami)** +1 305 827 5912 | **London** +44 207 961 4120 | **Los Angeles** +1 800 233 1614 | **Melbourne** +61 3 9939 8543 | **Mexico City** +55 5010 7600 | **Mumbai** +91 22 6284 5050 | **Nantong** +86 400 800 7429 | **New York** +1 212 953 7429 | **Paris** +33 (0) 1 81 22 44 39 | **San Francisco** +1 415 955 1920 | **Santiago** +562 2431 5000 x 550 | **São Paulo** +55 11 3071 1702 | **Shanghai** +86 21 3338 4000 | **Singapore** +65 6733 1811 | **Sydney** +61 800 556 302