

Bellcourt

Product Type	Broadloom	
Collection	Lush Life	
Style Number	5B094	
Construction	Cut Pile	
Fiber	Ecosolution Q® Nylon	
Primary Backing	Synthetic	
Secondary Backing	Classicbac®	
Protective Treatments	Srs® Stain Resistance Treatment	
Recommended Adhesive	1000 Broadloom 4 Gallon or 3800 Indoor Outdoor Broadloom 4 Gallon	
	u.s.	metric
Product Size	12 ft	3.66 m
Gauge	1/10 in	39.4 per 10 cm
Stitches	12.5 per in	49.0 per 10 cm
Finished Pile Thickness	0.257 in	6.53 mm
Average Density	5043 oz/yd³	0.187 g/cm³
Kilotex		11.75
Total Thickness	0.390 in	9.91 mm
Tufted Weight	36 oz/yd²	1220.6 g/m²
Installation Pattern Repeat	18" w x 18" l	45.72 cm w x 45.72 cm l

Recommended Installation Method

Direct Glue, Double Glue, Stretch-In

Data + Testing

Pill Test	Pass
Radiant Panel	Class I
Nbs Smoke	Less Than 450
Electrostatic Propensity	Less Than 3.5 kv
Ada Compliance	>0.6, Meets the recommended static coefficient of friction for ADA walking surfaces and accessible routes***

Test Reports may be included or listed by the manufacturing/inventory style number as opposed to the noted selling style number.

Warranties

20 Year Commercial Limited

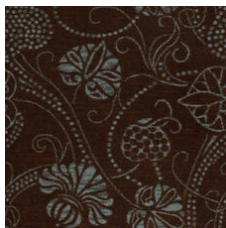
Material Health & Environmental Certifications

Climate Impact	
Embodied Carbon (Cradle to Gate)	12 kg CO ₂ /m ²
Total Recycled Content	<1% (Pre-Consumer <1% Post-Consumer 0%)
Global Product Assessment	Country of Origin** USA

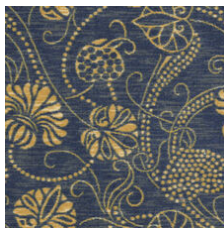
Coordinating Products

Broadloom: **Moritz, Kennebunk, Cranford**

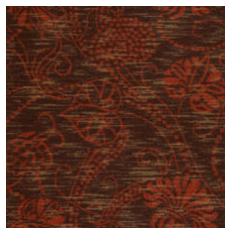
Available Colorways



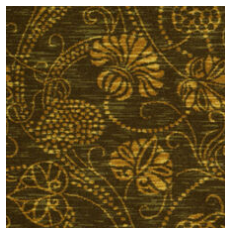
Refined 94314



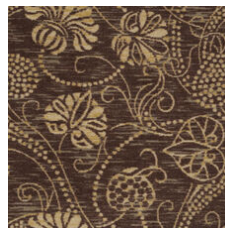
Ooh La La 94335



On The Town 94713



So Glam 94725



Panache 94761

Additional Information

***This carpet is manufactured to be ADA compliant, but to be fully ADA compliant, the end-user must ensure the carpet is adhered to the floor and installed as outlined in the ADA standards.

[Installation Guidelines](#)

Specifications are subject to nominal manufacturing variance. Material supply and/or manufacturing processes may necessitate changes without notice.

This product is an exclusive design and may not be duplicated in any manner. Use of this design in the creation of another product design is also strictly prohibited.

Visit shawcontract.com/testing for more information.