

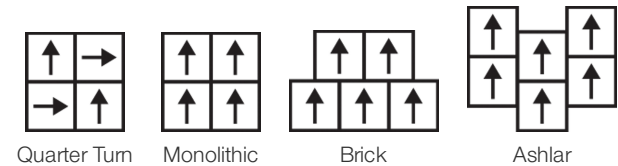
Amalgam

Collection	Eon + Amalgam	
Style Number	4113V	
Aspect	Heavy Commercial Luxury Vinyl Tile	
class	Class III, Type B	
Finish	ExoGuard®	
	Metric	U.s.
Nominal Dimensions	50 cm w x 50 cm l	20 in w x 20 in l
Actual Dimensions	50.03 cm w x 50.03 cm l	19.70 in w x 19.70 in l
Wear Layer Thickness	0.56 mm	22 mil (0.022 in)
Overall Product Thickness	5 mm	0.197 in
Edge Profile	Squared Edge	
Installation Type	Loose Lay	
Installation	Direct Glue Or Perimeter Glue	
Recommended Adhesive	S150-95 Resilient Tile Spray, , 4200 Resilient Tile 4 Gallon, 2200 Semi-Wet Resilient 4 Gallon Pail, 2200 Semi-Wet Resilient 1 Gallon Pail, or 4151 Multi-Use Premium 4 Gallon	

Packaging

Pieces Per Box	10 pcs	
Area Per Box	2.5 sq m	26.91 sq ft
Weight Per Box	20.8 kg	45.85 lbs

Recommended Installation Method



Coordinating Products

LVT: Eon

Performance + Testing

Resistance to Heat (ASTM F1514)	Passes
Resistance to Light (ASTM F1515)	Passes
Resistance to Chemicals (ASTM F925)	Passes
Radiant Panel (ASTM E648)	Passes, Class I
Coefficient of Friction (ASTM D2047, Slip Resistance)	>0.6, meets the recommended static coefficient of friction for ADA walking surfaces and accessible routes

Test Reports may be included or listed by the manufacturing/inventory style number as opposed to the noted selling style number.

Warranties

- 15 Year Commercial Limited
- Commercial 15 Year Underbed Bond Warranty

Product Transparency

Shaw Contract is dedicated to providing clients with a building chemistry that's safe and dependable. Working together, we will help you meet your goals as they pertain to material health. Luxury Vinyl Tile products are UL Certified with an Industry-Wide EPD and are assessed for impacts on human health and the environment.

Material Health & Environmental Certifications

Health Product Declaration (HPD)	<a href="#">1000 ppm Disclosure</a>
Environmental Product Declaration (EPD)	<a href="#">3rd Party Certified in Accordance with ISO 14025, EN 15804, &amp; ISO 21930:2017</a>
Embodied Carbon (Cradle to Gate)	<b>7.31 Kg Co<sub>2</sub>/M<sup>2</sup></b>
FloorScore®	<a href="#">Certified</a>
Total Recycled Content	<b>0% (Pre-Consumer 0%   Post-Consumer 0%)</b>
Country of Origin	<b>South Korea</b>

WELL V2 Contribution Credit

X01 Fundamental Material Precautions Part 1: (C): Restrict Asbestos Precondition	<b>Absence of Asbestos</b>
X08 Hazardous Material Reduction Part 1: Limit Hazardous Materials Optimization	<b>Absence of Heavy Metals</b>
X10 Volatile Compound Reduction Part 1 (A): Manage Volatile Organic Compounds (VOCs) Optimization	<b>Absence of Halogenated Flame Retardants</b>
X10 Volatile Compound Reduction Part 2: Manage Semi-Volatile Organic Compounds (SVOCs) Optimization	<b>Ortho-Phthalates</b>
X11 Long Term Emissions Control Part 2: Flooring Optimization	<b>FloorScore Certificate</b>
X14 Material Transparency Part 1: Promote Ingredient Disclosure Optimization	<b>Health Product Declaration (HPD)   100 Ppm Disclosure</b>

Leed v4 Contribution Credits

MR Credit: Building Product Disclosure and Optimization Material Ingredients - Option 1: Material Ingredient Reporting	<b>Health Product Declaration (HPD)   100 Ppm Disclosure</b>
MR Credit: Building Product Disclosure and Optimization Environmental Product Declarations - Option 1: Environmental Product Declaration (EPD)	<b>3rd Party Certified in Accordance with ISO 14025, EN 15804, &amp; ISO 21930:2017</b>
EQ Credit: Low Emitting Materials Option 1: Product Category Calculations	<b>FloorScore Certified</b>

[Installation Guidelines](#)

[Maintenance Guidelines](#)

Please visit [www.shawcontract.com](http://www.shawcontract.com) for the most current warranty information.  
Specifications are subject to nominal manufacturing variance. Material supply and/or manufacturing processes may necessitate changes without notice.

This product is an exclusive design and may not be duplicated in any manner. Use of this design in the creation of another product design is also strictly prohibited.

Visit [shawcontract.com/testing](http://shawcontract.com/testing) for more information.

## Light Reflectance Value



Pumice 13111  
LRV 45.2 | L\* 73.03  
V2 - Slight Variation



Uncover 13114  
LRV 35.7 | L\* 66.28  
V2 - Slight Variation



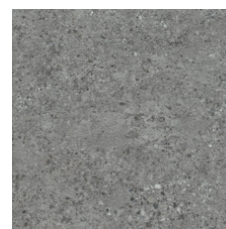
Ore 13506  
LRV 26 | L\* 58.02  
V2 - Slight Variation



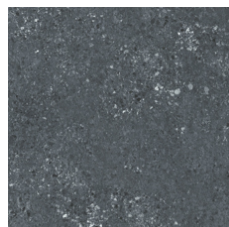
Sediment 13518  
LRV 22.4 | L\* 54.43  
V2 - Slight Variation



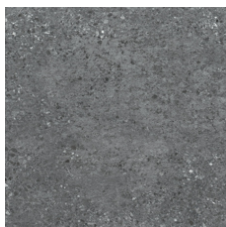
Excavate 13520  
LRV 30.8 | L\* 62.35  
V2 - Slight Variation



Fault 13530  
LRV 17.8 | L\* 49.21  
V2 - Slight Variation



Onyx 13555  
LRV 11.7 | L\* 40.68  
V2 - Slight Variation



Delta 13585  
LRV 14.7 | L\* 45.26  
V2 - Slight Variation

## Color and Visual Variation Index

Shade and texture variation is inherent in all resilient products and can vary significantly from piece to piece. Samples should be used to assess color.

V1



Uniform Appearance

V2



Slight Variation

V3



Moderate Variation

V4



Substantial Variation

