

Amalgam

Collection	Eon + Amalgam	
Numéro Du Style	4113V	
Construction	Heavy Commercial Luxury Vinyl Tile	
Classement	Class III, Type B	
Finition	ExoGuard®	
	U.s.	Metric
Dimensions Nominales	20 in w x 20 in l	50 cm w x 50 cm l
Dimensions Réelles	19.70 in w x 19.70 in l	50.03 cm w x 50.03 cm l
Épaisseur De La Couche d'Usure	22 mil (0.022 in)	0.56 mm
Épaisseur Générale Du Produit	0.197 in	5 mm
Profil Du Bord	Bord Carré	
Installation Type	Loose Lay	
Installation	Direct Glue Or Perimeter Glue	
Adhésif Recommandé	S150-95 Resilient Tile Spray, , 4200 Resilient Tile 4 Gallon, 2200 Semi-Wet Resilient 4 Gallon Pail, 2200 Semi-Wet Resilient 1 Gallon Pail, or 4151 Multi-Use Premium 4 Gallon	

Packaging

Pièces Par Carton	10 pcs	
Surface Par Carton	26.91 sq ft	2.5 sq m
Poids Par Carton	45.85 lbs	20.8 kg

Méthodes d'Installation Conseillées



Coordination Des Produits

LVT: Eon

Performance + Tests Et Essai

Résistance À La Chaleur (Astm F1514)	Passes
Résistance À La Lumière (Astm F1515)	Passes
Résistance Chimique (Astm F925)	Passes
Panneau Rayonnant (Astm E648)	Passes, Class I
Coefficient De Frottement (Astm D2407, Résistance Au Glissement)	>0.6, meets the recommended static coefficient of friction for ADA walking surfaces and accessible routes

Test Reports may be included or listed by the manufacturing/inventory style number as opposed to the noted selling style number.

Garanties

- Limitée Commerciale De 15 Ans
- Commercial 15 Year Underbed Bond Warranty

Transparence du produit

Shaw Contract is dedicated to providing clients with a building chemistry that's safe and dependable. Working together, we will help you meet your goals as they pertain to material health. Luxury Vinyl Tile products are UL Certified with an Industry-Wide EPD and are assessed for impacts on human health and the environment.

Attributs + Certifications

Déclaration sanitaire de produit (HPD)	<a href="#">1000 ppm Disclosure</a>
Déclaration environnementale de produit (EPD)	<a href="#">Certifié Par Un Organisme Tiers Conformément Aux Normes ISO 14025, EN15804 &amp; ISO 21930:2017</a>
Embodied Carbon (Cradle to Gate)	<b>7.31 Kg Co<sub>2</sub>/M<sup>2</sup></b>
FloorScore®	<a href="#">Certifié</a>
Total Recycled Content	<b>0% (Pre-Consumer 0%   Post-Consumer 0%)</b>
pays d'origine	<b>South Korea</b>

WELL V2 Contribution Credit

X01 Fundamental Material Precautions Part 1: (C): Restrict Asbestos Precondition	<b>Absence of Asbestos</b>
X08 Hazardous Material Reduction Part 1: Limit Hazardous Materials Optimization	<b>Absence of Heavy Metals</b>
X10 Volatile Compound Reduction Part 1 (A): Manage Volatile Organic Compounds (VOCs) Optimization	<b>Absence of Halogenated Flame Retardants</b>
X10 Volatile Compound Reduction Part 2: Manage Semi-Volatile Organic Compounds (SVOCs) Optimization	<b>Ortho-Phthalates</b>
X11 Long Term Emissions Control Part 2: Flooring Optimization	<b>FloorScore Certificate</b>
X14 Material Transparency Part 1: Promote Ingredient Disclosure Optimization	<b>Health Product Declaration (HPD)   100 Ppm Disclosure</b>

Contribution À La Certification Leed

MR Credit: Building Product Disclosure and Optimisation Material Ingredients - Option 1: Material Ingredient Reporting	<b>Health Product Declaration (HPD)   100 Ppm Disclosure</b>
MR Credit: Building Product Disclosure and Optimisation Environmental Product Declarations - Option 1: Environmental Product Declaration (EPD)	<b>3rd Party Certified in Accordance with ISO 14025, EN 15804, &amp; ISO 21930:2017</b>
"Crédit EQ : matériaux faibles émissions Option 1 : calculs par catégorie de produit"	<b>FloorScore Certified</b>

[Installation Guidelines](#)

[Maintenance Guidelines](#)

Please visit [www.shawcontract.com](http://www.shawcontract.com) for the most current warranty information.  
Specifications are subject to nominal manufacturing variance. Material supply and/or manufacturing processes may necessitate changes without notice.

This product is an exclusive design and may not be duplicated in any manner. Use of this design in the creation of another product design is also strictly prohibited.  
\*\*\*\*\*Allowable spend is domestic (US) spend in categories in which we have diverse suppliers from which to choose. Compared to non-allowable spend which includes categories in which we do not have domestic, small or diverse suppliers available to meet our needs.

Visit [shawcontract.com/testing](http://shawcontract.com/testing) for more information.

## Indice De Réflexion Lumineuse



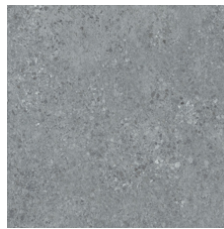
Pumice 13111  
LRV 45.2 | L\* 73.03  
V2 - Slight Variation



Uncover 13114  
LRV 35.7 | L\* 66.28  
V2 - Slight Variation



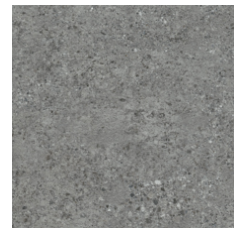
Ore 13506  
LRV 26 | L\* 58.02  
V2 - Slight Variation



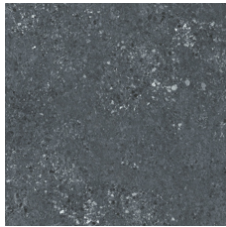
Sediment 13518  
LRV 22.4 | L\* 54.43  
V2 - Slight Variation



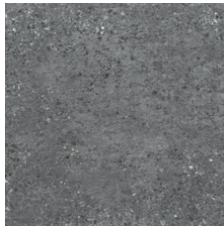
Excavate 13520  
LRV 30.8 | L\* 62.35  
V2 - Slight Variation



Fault 13530  
LRV 17.8 | L\* 49.21  
V2 - Slight Variation



Onyx 13555  
LRV 11.7 | L\* 40.68  
V2 - Slight Variation



Delta 13585  
LRV 14.7 | L\* 45.26  
V2 - Slight Variation

### Color and Visual Variation Index

Shade and texture variation is inherent in all resilient products and can vary significantly from piece to piece. Samples should be used to assess color.

V1



Uniform Appearance

V2



Slight Variation

V3



Moderate Variation

V4



Substantial Variation

