

Amalgam

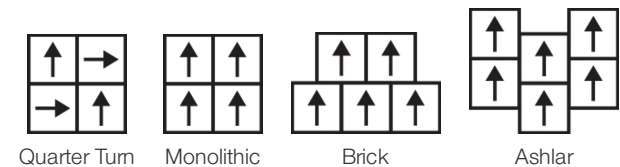
Collection	Eon + Amalgam	
Numéro De Style	4113V	
Construction	Carreau De Vinyle De Luxe Commercial Lourd	
classe	Class III, Type B	
Finition	ExoGuard®	
	Impérial	Métrique
Dimensions Nominales	20 in w x 20 in l	50 cm w x 50 cm l
Dimensions Réelles	19.70 in w x 19.70 in l	50.03 cm w x 50.03 cm l
Épaisseur De La Couche d'Usure	22 mil (0.022 in)	0.56 mm
Épaisseur Générale Du Produit	0.197 in	5 mm
Profil Du Bord	Bord Carré	
Installation Type	Loose Lay	
Installation	Direct Glue Or Perimeter Glue	
Adhésif Recommandé	S150-95 Resilient Tile Spray, 4200 Resilient Tile 4 Gallon, 2200 Resilient Tile 4 Gallon or 4151 Multi-Use Premium 4 Gallon	

Emballage

Pièces Par Carton	10 pcs	
Surface Par Carton	26.91 sq ft	2.5 sq m
Poids Par Carton	45.85 lbs	20.8 kg



Méthodes d'Installation Conseillées



Coordination Des Produits

LVT: Eon

Performance + Tests Et Essai

Résistance À La Chaleur (Astm F1514)	Passes
Résistance À La Lumière (Astm F1515)	Passes
Résistance Chimique (Astm F925)	Passes
Coefficient De Frottement (Astm D2407, Résistance Au Glissement)	>0.6, meets the recommended static coefficient of friction for ADA walking surfaces and accessible routes

Test Reports may be included or listed by the manufacturing/inventory style number as opposed to the noted selling style number.

Garanties

[Limitée Commerciale De 15 Ans](#)
[Commercial 15 Year Underbed Bond Warranty](#)

Diversity, Equity & Inclusion

We believe all humans are equal. Individually and collectively, we need to proactively create and promote opportunities that give everybody an equal footing in life. We nurture an environment where every voice and perspective can be heard, and proactively promote accessibility and inclusivity inside our network and beyond. One proof point is our ability to meet the criteria of the Social Fairness pillar of the Cradle to Cradle Product Standard. At Shaw Industries, we promote supplier participation that is reflective of Shaw's diverse customer base and local community. More than 42% of our spend***** is with small and diverse businesses. We believe having a strong Supplier Diversity Program is strategic for bringing more innovation to our businesses and openingnew markets for growth.

Attributs + Certifications

Health & Wellbeing

Material Ingredient Transparency

Health Product Declaration (HPD) | 1000 ppm Disclosure

Climate Impact

Environmental Product Declaration (EPD)

Certifié Par Une Tierce Partie Conformément Aux Normes ISO 14025, EN 15804 Et ISO 21930:2017

Embodied Carbon (Cradle to Gate)

7.31 Kg Co₂/M²

Total Recycled Content

0% (Pre-Consumer 0% | Post-Consumer 0%)

Global Product Assessment

FloorScore® | Agréé
Country of Origin | Imported

Contribution Au Certificat Vert Leed

« Crédit MR : Divulgence et optimisation des produits de construction
« Crédit MR : Divulgence et optimisation des produits de construction

Crédit EQ : matériaux faibles émissions

[Installation Guidelines](#)
[Maintenance Guidelines](#)

Health Product Declaration (HPD) | 100 Ppm Disclosure
3rd Party Certified in Accordance with ISO 14025, EN 15804, & ISO 21930:2017
FloorScore Certified

Please visit www.shawcontract.com for the most current warranty information.
Specifications are subject to nominal manufacturing variance. Material supply and/or manufacturing processes may necessitate changes without notice.

This product is an exclusive design and may not be duplicated in any manner. Use of this design in the creation of another product design is also strictly prohibited.
*****Allowable spend is domestic (US) spend in categories in which we have diverse suppliers from which to choose. Compared to non-allowable spend which includes categories in which we do not have domestic, small or diverse suppliers available to meet our needs.

Visit shawcontract.com/testing for more information.

Available Colorways



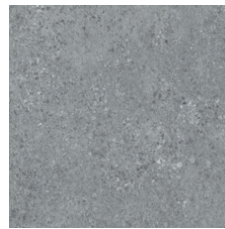
Pumice 13111
LRV 45.2
V2 - Slight Variation



Uncover 13114
LRV 35.7
V2 - Slight Variation



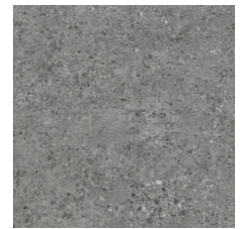
Ore 13506
LRV 26
V2 - Slight Variation



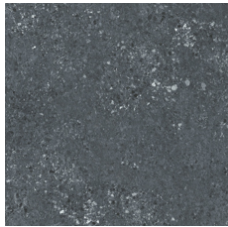
Sediment 13518
LRV 22.4
V2 - Slight Variation



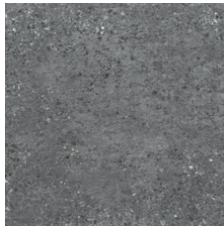
Excavate 13520
LRV 30.8
V2 - Slight Variation



Fault 13530
LRV 17.8
V2 - Slight Variation



Onyx 13555
LRV 11.7
V2 - Slight Variation



Delta 13585
LRV 14.7
V2 - Slight Variation

Color and Visual Variation Index

Shade and texture variation is inherent in all resilient products and can vary significantly from piece to piece. Samples should be used to assess color.

V1



Uniform Appearance

V2



Slight Variation

V3



Moderate Variation

V4



Substantial Variation

