

Type

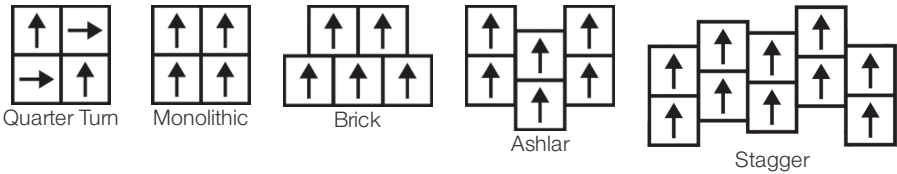
| | | |
|---------------------------|--|-------------------------|
| Collection | Dialogue | |
| Style Number | 4142V | |
| Construction | Heavy Commercial Luxury Vinyl Tile | |
| class | Class III, Type B | |
| Finish | ExoGuard+® | |
| | U.s. | Metric |
| Nominal Dimensions | 24 in w x 24 in l | 61 cm w x 61 cm l |
| Actual Dimensions | 24.00 in w x 24.00 in l | 60.96 cm w x 60.96 cm l |
| Wear Layer Thickness | 20 mil (0.02 in) | 0.51 mm |
| Overall Product Thickness | 0.197 in | 5 mm |
| Edge Profile | Squared Edge | |
| Installation Type | Dry Back | |
| Installation | Direct Glue | |
| Recommended Adhesive | S150-95 Resilient Tile Spray, , 4200 Resilient Tile 4 Gallon, 2200 Semi-Wet Resilient 4 Gallon Pail, 2200 Semi-Wet Resilient 1 Gallon Pail, or 4151 Multi-Use Premium 4 Gallon | |



Packaging

| | | |
|----------------|----------|-----------|
| Pieces Per Box | 8 pcs | |
| Area Per Box | 32 sq ft | 2.97 sq m |
| Weight Per Box | 54.4 lbs | 24.68 kg |

Recommended Installation Method



Coordinating Products

LVT: Coded
Carpet Tile: Face To Face Tile, Spoken Tile, Written Tile, Translate Tile, Subtext Tile

performance + testing

| | | |
|--|------------------------------|--|
| static load (ASTM F970) | Passes (Modified), *1500 lbs | *This test is intended to compare relative properties of different styles and constructions. Results are based on a laboratory test and used for comparative purposes - real life load limit may vary. |
| residual indentation (ASTM F1914) | Passes | |
| resistance to heat (ASTM F1514) | Passes | |
| resistance to light (ASTM F1515) | Passes | |
| resistance to chemicals (ASTM F925) | Passes | |
| radiant panel (ASTM E648) | Passes, Class I | |
| Test Reports may be included or listed by the manufacturing/inventory style number as opposed to the noted selling style number. | | |

Warranties

[15 Year Commercial Limited](#)
[Commercial 15 Year Underbed Bond Warranty](#)

Diversity & Inclusion

We promote supplier participation that is reflective of Shaw Industries' diverse customer base and local community. We believe having a strong Supplier Diversity Program is strategic for bringing more innovation to our businesses and opening new markets for growth.

Attributes + Certifications

| | |
|---|---|
| Health & Wellbeing | |
| Material Ingredient Transparency | Health Product Declaration (HPD) 1000 ppm Disclosure |
| Indoor Air Quality | FloorScore® Certified |
| Climate Impact | |
| Environmental Product Declaration (EPD) | 3rd Party Certified in Accordance with ISO 14025, EN 15804, & ISO 21930:2017 |
| Embodied Carbon (Cradle to Gate) | 9.59 Kg CO ₂ /M ² |
| Total Recycled Content | 30% (Pre-Consumer 30% Post-Consumer 0%) |
| Global Product Assessment | Environmental Guarantee* Through Our Environmental Guarantee, Shaw Pledges to Transport And Recycle Any Shaw Manufactured Resilient Within The United States And Canada At No Cost to The Customer. |
| | CE Marking (EN 14041) 3rd Party Certified |
| | Country of Origin United States |

WELL V2 Contribution Credit

| | |
|--|---|
| X01 Fundamental Material Precautions Part 1: (C): Restrict Asbestos Precondition | Absence of Asbestos |
| X08 Hazardous Material Reduction Part 1: Limit Hazardous Materials Optimization – 1 pt | Absence of Heavy Metals |
| X10 Volatile Compound Reduction Part 1 (A): Manage Volatile Organic Compounds (VOCs) Optimization – 1 pt | Absence of Halogenated Flame Retardants |
| Part 2: Manage Semi-Volatile Organic Compounds (SVOCs) Optimization – 1 pt | Ortho-Phthalates |
| X11 Long Term Emissions Control Part 2: Flooring Optimization – 1 pt | FloorScore Certificate |

Green Leed Contribution Credit

MR Credit: Building Product Disclosure and Optimization
Environmental Product Declarations - Option 1: Environmental Product Declaration (EPD)
EQ Credit: Low Emitting Materials
Option 1: Product Category Calculations

3rd Party Certified in Accordance with ISO 14025, EN 15804, & ISO 21930:2017
FloorScore® Certified

Additional Information

* To learn more about the recyclability of our products and our Environmental Guarantee, please visit shawcontract.com/sustainability.

[Installation Guidelines](#)

[Maintenance Guidelines](#)

Please visit www.shawcontract.com for the most current warranty information.
Specifications are subject to nominal manufacturing variance. Material supply and/or manufacturing processes may necessitate changes without notice.

This product is an exclusive design and may not be duplicated in any manner. Use of this design in the creation of another product design is also strictly prohibited.

Visit shawcontract.com/testing for more information.

Available Colorways



Converse 42100
LRV 42.8 | L* 71.41
V2 - Slight Variation



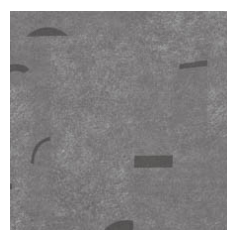
Declare 42504
V2 - Slight Variation



Convey 42515
V2 - Slight Variation



Imply 42518
V2 - Slight Variation



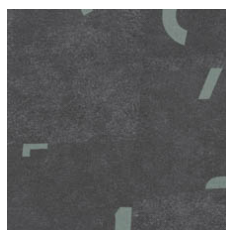
Describe 42530
V2 - Slight Variation



Share 42585
V2 - Slight Variation



Engage 42595
V2 - Slight Variation



Interpret 42761
V2 - Slight Variation

Color and Visual Variation Index

Shade and texture variation is inherent in all resilient products and can vary significantly from piece to piece. Samples should be used to assess color.

V1



Uniform Appearance

V2



Slight Variation

V3



Moderate Variation

V4



Substantial Variation

