

Type

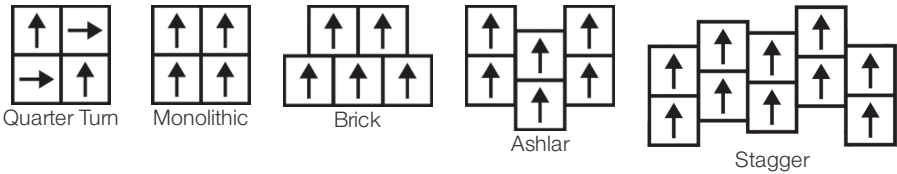
Colección	Dialogue	
Número De Estilo	4142V	
Construcción	Heavy Commercial Luxury Vinyl Tile	
clase	Class III, Type B	
Terminación	ExoGuard+®	
	U.s.	Metric
Dimensiones Nominales	24 in w x 24 in l	61 cm w x 61 cm l
Dimensiones Reales	24.00 in w x 24.00 in l	60.96 cm w x 60.96 cm l
Desgaste De La Capa De Uso	20 mil (0.02 in)	0.51 mm
Espesor Total Del Producto	0.197 in	5 mm
Perfil De Borde	Borde Cuadrado	
Installation Type	Dry Back	
Instalación	Direct Glue	
Adhesivo Recomendado	S150-95 Resilient Tile Spray, , 4200 Resilient Tile 4 Gallon, 2200 Semi-Wet Resilient 4 Gallon Pail, 2200 Semi-Wet Resilient 1 Gallon Pail, or 4151 Multi-Use Premium 4 Gallon	



Embalaje

Piezas Por Caja	8 pcs	
Área Por Caja	32 sq ft	2.97 sq m
Peso Por Caja	54.4 lbs	24.68 kg

Método De Instalación Recomendado



Productos Que Combinan

LVT: Coded  
Carpet Tile: Face To Face Tile, Spoken Tile, Written Tile, Translate Tile, Subtext Tile

desempeño + pruebas

carga estática (ASTM F970)	<b>Passes (Modified), *1500 lbs</b>	*This test is intended to compare relative properties of different styles and constructions. Results are based on a laboratory test and used for comparative purposes - real life load limit may vary.
margen adicional residual (ASTM F1914)	<b>Passes</b>	
resistencia al calor (ASTM F1514)	<b>Passes</b>	
resistencia a la luz (ASTM F1515)	<b>Passes</b>	
resistencia a productos químicos (ASTM F925)	<b>Passes</b>	
panel radiante (ASTM E648)	<b>Passes, Class I</b>	
Test Reports may be included or listed by the manufacturing/inventory style number as opposed to the noted selling style number.		

Garantías

[15 Años Limitado A Uso Comercial](#)  
[Commercial 15 Year Underbed Bond Warranty](#)

Diversity & Inclusion

We promote supplier participation that is reflective of Shaw Industries' diverse customer base and local community. We believe having a strong Supplier Diversity Program is strategic for bringing more innovation to our businesses and opening new markets for growth.

Atributos + Certificaciones

Health & Wellbeing	
Material Ingredient Transparency	Health Product Declaration (HPD)   1000 ppm Disclosure
Indoor Air Quality	FloorScore®   Certificado
Climate Impact	
Environmental Product Declaration (EPD)	Certificado Tercerizado De Acuerdo Con La Norma ISO 14025, EN 15804, & ISO 21930:2017
Embodied Carbon (Cradle to Gate)	9.59 Kg Co <sub>2</sub> /M <sup>2</sup>
Total Recycled Content	30% (Pre-Consumer 30%   Post-Consumer 0%)
Global Product Assessment	Environmental Guarantee*   Through Our Environmental Guarantee, Shaw Pledges to Transport And Recycle Any Shaw Manufactured Resilient Within The United States And Canada At No Cost to The Customer.
	CE Marking (EN 14041)   Certificado Tercerizado
	Country of Origin   United States

WELL V2 Contribution Credit

X01 Fundamental Material Precautions Part 1: (C): Restrict Asbestos Precondition	<b>Absence of Asbestos</b>
X08 Hazardous Material Reduction Part 1: Limit Hazardous Materials Optimization – 1 pt	<b>Absence of Heavy Metals</b>
X10 Volatile Compound Reduction Part 1 (A): Manage Volatile Organic Compounds (VOCs) Optimization – 1 pt	<b>Absence of Halogenated Flame Retardants</b>
Part 2: Manage Semi-Volatile Organic Compounds (SVOCs) Optimization – 1 pt	<b>Ortho-Phthalates</b>
X11 Long Term Emissions Control Part 2: Flooring Optimization – 1 pt	<b>FloorScore Certificate</b>

## Contribución Para Créditos Leed

Crédito MR: Divulgación y optimización de productos de construcción  
Declaraciones ambientales de productos - Opción 1: Declaración ambiental de productos (EPD)

Crédito EQ: Materiales de baja emisión  
Opción 1: Cálculos de categoría de producto

**3rd Party Certified in Accordance with ISO 14025, EN 15804, & ISO 21930:2017**

**FloorScore® Certified**

## Información Adicional

\* To learn more about the recyclability of our products and our Environmental Guarantee, please visit [shawcontract.com/sustainability](https://shawcontract.com/sustainability).

[Installation Guidelines](#)

[Maintenance Guidelines](#)

Please visit [www.shawcontract.com](https://www.shawcontract.com) for the most current warranty information. Specifications are subject to nominal manufacturing variance. Material supply and/or manufacturing processes may necessitate changes without notice.

This product is an exclusive design and may not be duplicated in any manner. Use of this design in the creation of another product design is also strictly prohibited.

Visit [shawcontract.com/testing](https://shawcontract.com/testing) for more information.

## Available Colorways



Converse 42100  
LRV 42.8 | L\* 71.41  
V2 - Slight Variation



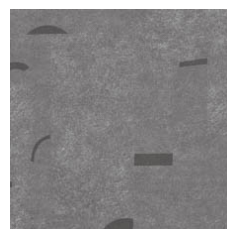
Declare 42504  
V2 - Slight Variation



Convey 42515  
V2 - Slight Variation



Imply 42518  
V2 - Slight Variation



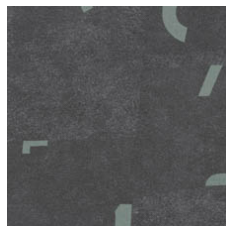
Describe 42530  
V2 - Slight Variation



Share 42585  
V2 - Slight Variation



Engage 42595  
V2 - Slight Variation



Interpret 42761  
V2 - Slight Variation

### Color and Visual Variation Index

Shade and texture variation is inherent in all resilient products and can vary significantly from piece to piece. Samples should be used to assess color.

V1



Uniform Appearance

V2



Slight Variation

V3



Moderate Variation

V4



Substantial Variation

