

Coded

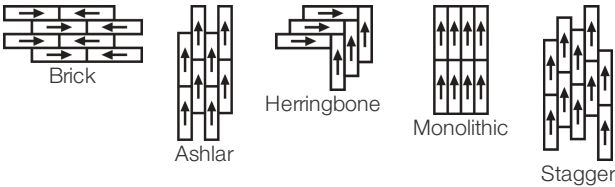
Collection	Dialogue	
Style Number	4143V	
Construction	Heavy Commercial Luxury Vinyl Tile	
Class / ASTM F1700	Class III, Type B	
Finish	ExoGuard+®	
	U.S.	Metric
Nominal Dimensions	6 in w x 48 in l	15 cm w x 122 cm l
Actual Dimensions	5.96 in w x 48.00 in l	15.14 cm w x 121.92 cm l
Wear Layer Thickness	20 mil (0.02 in)	0.51 mm
Overall Thickness	0.197 in	5 mm
Edge Profile	Squared Edge	
Installation Type	Dry Back	
Installation	Direct Glue	
Recommended Adhesive	S150-95 Resilient Tile Spray, , 4200 Resilient Tile 4 Gallon, 2200 Semi-Wet Resilient 4 Gallon Pail, 2200 Semi-Wet Resilient 1 Gallon Pail, or 4151 Multi-Use Premium 4 Gallon	

Packaging

Pieces per Carton	11 pcs	
Area per Carton	21.85 sq ft	2.03 sq m
Weight per Carton	37.13 lbs	16.84 kg



Recommended Installation Method



Coordinating Products

LVT: Type
Carpet Tile: Face To Face Tile, Spoken Tile, Written Tile, Translate Tile, Subtext Tile

Performance + Testing

Static Load (ASTM F970)	Passes (Modified), *1500 lbs
Resistance to Heat (ASTM F1514)	Passes
Resistance to Light (ASTM F1515)	Passes
Resistance to Chemicals (ASTM F925)	Passes
Radiant Panel (ASTM E648)	Passes, Class I

*This test is intended to compare relative properties of different styles and constructions. Results are based on a laboratory test and used for comparative purposes - real life load limit may vary.

Test Reports may be included or listed by the manufacturing/inventory style number as opposed to the noted selling style number.

Warranties

[15 Year Commercial Limited Warranty](#)
[Commercial 15 Year Underbed Bond Warranty](#)

Diversity & Inclusion

We promote supplier participation that is reflective of Shaw Industries' diverse customer base and local community. We believe having a strong Supplier Diversity Program is strategic for bringing more innovation to our businesses and opening new markets for growth.

Material Health & Environmental Certifications

Health & Wellbeing	
Material Ingredient Transparency	Health Product Declaration (HPD) 1000 ppm Disclosure
Indoor Air Quality	FloorScore® Certified
Climate Impact	
Environmental Product Declaration (EPD)	3rd Party Certified in Accordance with ISO 14025, EN 15804, & ISO 21930:2017
Embodied Carbon (Cradle to Gate)	9.59 Kg CO ₂ /M ²
Total Recycled Content	30% (Pre-Consumer 30% Post-Consumer 0%)
Global Product Assessment	
Environmental Guarantee* Through Our Environmental Guarantee, Shaw Pledges to Transport And Recycle Any Shaw Manufactured Resilient Within The United States And Canada At No Cost to The Customer.	
CE Marking (EN 14041) 3rd Party Certified	
Country of Origin United States	

WELL V2 Contribution Credit

X01 Fundamental Material Precautions Part 1: (C): Restrict Asbestos Precondition	Absence of Asbestos
X08 Hazardous Material Reduction Part 1: Limit Hazardous Materials Optimization	Absence of Heavy Metals
X10 Volatile Compound Reduction Part 1 (A): Manage Volatile Organic Compounds (VOCs) Optimization	Absence of Halogenated Flame Retardants
X10 Volatile Compound Reduction Part 2: Manage Semi-Volatile Organic Compounds (SVOCs) Optimization	Ortho-Phthalates
X11 Long Term Emissions Control Part 2: Flooring Optimization	FloorScore Certificate
X14 Material Transparency Part 1: Promote Ingredient Disclosure Optimization	Health Product Declaration (HPD) 1000 Ppm Disclosure

Leed v4 Contribution Credits

MR Credit: Building Product Disclosure and Optimization
Material Ingredients - Option 1: Material Ingredient Reporting

MR Credit: Building Product Disclosure and Optimization
Environmental Product Declarations - Option 1: Environmental Product Declaration (EPD)

EQ Credit: Low Emitting Materials
Option 1: Product Category Calculations

Health Product Declaration (HPD) | 1000 Ppm Disclosure

3rd Party Certified in Accordance with ISO 14025, EN 15804, & ISO 21930:2017

FloorScore Certified

Additional Information

* To learn more about the recyclability of our products and our Environmental Guarantee, please visit shawcontract.com/sustainability.

[Installation Guidelines](#)

[Maintenance Guidelines](#)

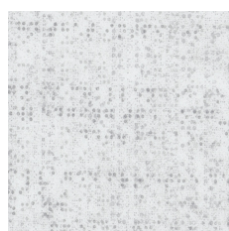
Please visit www.shawcontract.com for the most current warranty information.

Specifications are subject to nominal manufacturing variance. Material supply and/or manufacturing processes may necessitate changes without notice.

This product is an exclusive design and may not be duplicated in any manner. Use of this design in the creation of another product design is also strictly prohibited.

Visit shawcontract.com/testing for more information.

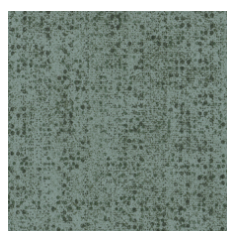
Available Colorways



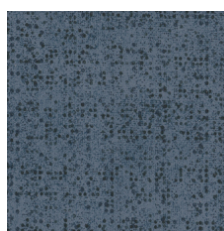
Converse 43100
V2 - Slight Variation



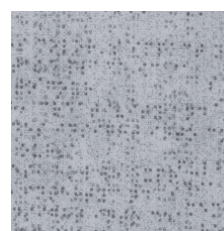
Relate 43210
V2 - Slight Variation



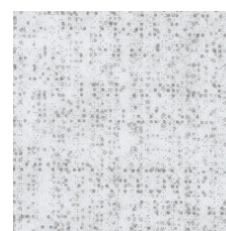
Connect 43375
V2 - Slight Variation



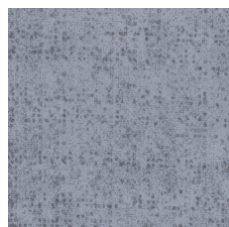
Inform 43429
V2 - Slight Variation



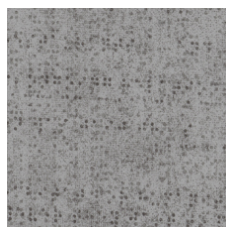
Declare 43504
V2 - Slight Variation



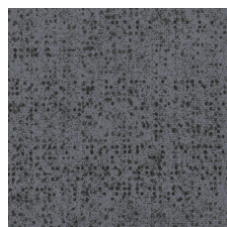
Convey 43515
V2 - Slight Variation



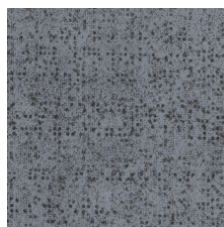
ImPLY 43518
V2 - Slight Variation



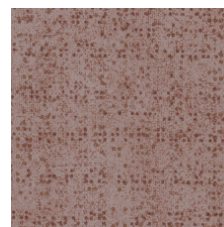
Describe 43530
V2 - Slight Variation



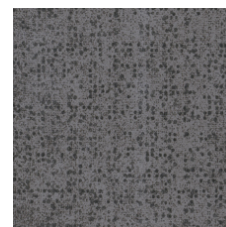
Share 43585
V2 - Slight Variation



Engage 43595
V2 - Slight Variation



Fluent 43715
V2 - Slight Variation



Interpret 43761
V2 - Slight Variation

Color and Visual Variation Index

Shade and texture variation is inherent in all resilient products and can vary significantly from piece to piece. Samples should be used to assess color.

V1



Uniform Appearance

V2



Slight Variation

V3



Moderate Variation

V4



Substantial Variation

