

Coded

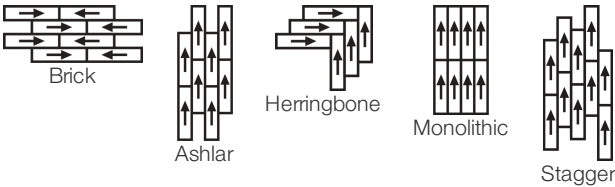
Collection	Dialogue	
Numéro De Style	4143V	
Construction	Carreau De Vinyle De Luxe Commercial Lourd	
classe	Class III, Type B	
Finition	ExoGuard+®	
	Impérial	Métrique
Dimensions Nominales	6 in w x 48 in l	15 cm w x 122 cm l
Dimensions Réelles	5.96 in w x 48.00 in l	15.14 cm w x 121.92 cm l
Épaisseur De La Couche d'Usure	20 mil (0.02 in)	0.51 mm
Épaisseur Générale Du Produit	0.197 in	5 mm
Profil Du Bord	Bord Carré	
Installation Type	Dry Back	
Installation	Direct Glue	
Adhésif Recommandé	S150-95 Resilient Tile Spray, 4200 Resilient Tile 4 Gallon, 2200 Semi-Wet Resilient 4 Gallon Pail, 2200 Semi-Wet Resilient 1 Gallon Pail or 4151 Multi-Use Premium 4 Gallon	



Emballage

Pièces Par Carton	11 pcs	
Surface Par Carton	21.85 sq ft	2.03 sq m
Poids Par Carton	37.13 lbs	16.84 kg

Méthodes d'Installation Conseillées



Coordination Des Produits

LVT: Type
Carpet Tile: Face To Face Tile, Spoken Tile, Written Tile, Translate Tile, Subtext Tile

performance + Tests et essai

charge statique (ASTM F970)	Passes (Modified), *1500 lbs
résistance à la chaleur (ASTM F1514)	Passes
résistance à la lumière (ASTM F1515)	Passes
résistance chimique (ASTM F925)	Passes
Essai au panneau radiant (Astm E648)	Passes, Class I

*This test is intended to compare relative properties of different styles and constructions. Results are based on a laboratory test and used for comparative purposes - real life load limit may vary.

Test Reports may be included or listed by the manufacturing/inventory style number as opposed to the noted selling style number.

Garanties

[Limitée Commerciale De 15 Ans](#)
[Commercial 15 Year Underbed Bond Warranty](#)

Diversity & Inclusion

We promote supplier participation that is reflective of Shaw Industries' diverse customer base and local community. We believe having a strong Supplier Diversity Program is strategic for bringing more innovation to our businesses and opening new markets for growth.

Attributs + Certifications

Health & Wellbeing

Material Ingredient Transparency
Indoor Air Quality

Health Product Declaration (HPD) | 1000 ppm Disclosure
FloorScore® | Agréé

Climate Impact

Environmental Product Declaration (EPD)

Embodied Carbon (Cradle to Gate)
Total Recycled Content

Certifié Par Une Tierce Partie Conformément Aux Normes ISO 14025, EN 15804 Et ISO 21930:2017
9.59 Kg Co₂/M²
30% (Pre-Consumer 30% | Post-Consumer 0%)

Global Product Assessment

Environmental Guarantee* | Through Our Environmental Guarantee, Shaw Pledges to Transport And Recycle Any Shaw Manufactured Resilient Within The United States And Canada At No Cost to The Customer.
CE Marking (EN 14041) | Certifié Par Un Tiers
Country of Origin | United States

WELL V2 Contribution Credit

X01 Fundamental Material Precautions Part 1: (C): Restrict Asbestos Precondition	Absence of Asbestos
X08 Réduction des matières dangereuses Partie 1 : Optimisation des limites des matières dangereuses – 1 pt	Absence of Heavy Metals
X10 Réduction des composés volatils Partie 1 (A) : Gérer l'optimisation des composés organiques volatils (COV) - 1 pt	Absence of Halogenated Flame Retardants
Partie 2 : Gérer l'optimisation des composés organiques semi-volatils (COSV) - 1 pt	Ortho-Phthalates
X11 Contrôle des émissions à long terme Partie 2 : Optimisation des revêtements de sol – 1 pt	FloorScore Certificate
X14 Transparence des matériaux Partie 1 : Promouvoir l'optimisation de la divulgation des ingrédients - max 2 pts	Health Product Declaration (HPD) 1000 Ppm Disclosure

Contribution Au Certificat Vert Leed

« Crédit MR : Divulcation et optimisation des produits de construction
« Crédit MR : Divulcation et optimisation des produits de construction

Crédit EQ : matériaux faibles émissions

Health Product Declaration (HPD) | 1000 Ppm Disclosure
3rd Party Certified in Accordance with ISO 14025, EN 15804, & ISO 21930:2017
FloorScore Certified

Informations Supplémentaires

* To learn more about the recyclability of our products and our Environmental Guarantee, please visit shawcontract.com/sustainability.

[Installation Guidelines](#)

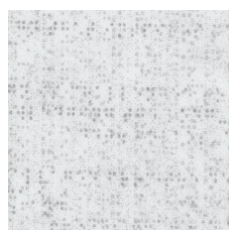
[Maintenance Guidelines](#)

Please visit www.shawcontract.com for the most current warranty information. Specifications are subject to nominal manufacturing variance. Material supply and/or manufacturing processes may necessitate changes without notice.

This product is an exclusive design and may not be duplicated in any manner. Use of this design in the creation of another product design is also strictly prohibited.

Visit shawcontract.com/testing for more information.

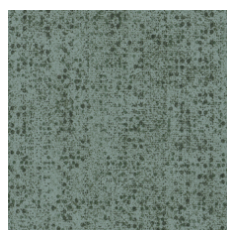
Available Colorways



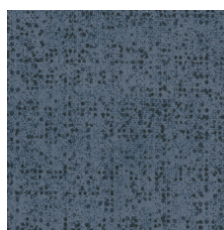
Converse 43100
V2 - Slight Variation



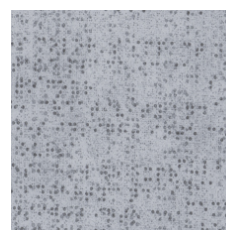
Relate 43210
V2 - Slight Variation



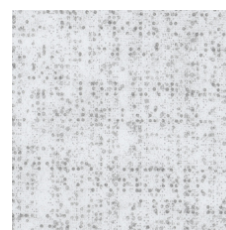
Connect 43375
V2 - Slight Variation



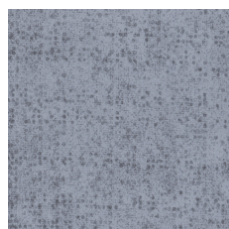
Inform 43429
V2 - Slight Variation



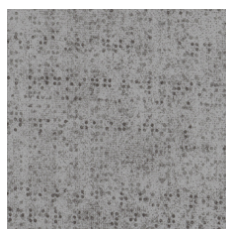
Declare 43504
V2 - Slight Variation



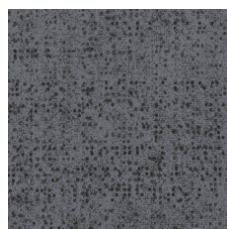
Convey 43515
V2 - Slight Variation



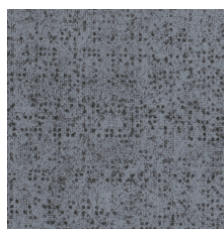
Imply 43518
V2 - Slight Variation



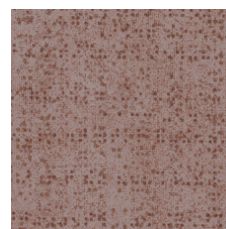
Describe 43530
V2 - Slight Variation



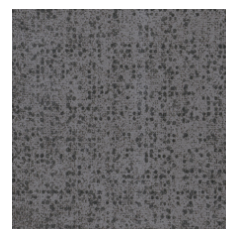
Share 43585
V2 - Slight Variation



Engage 43595
V2 - Slight Variation



Fluent 43715
V2 - Slight Variation



Interpret 43761
V2 - Slight Variation

Color and Visual Variation Index

Shade and texture variation is inherent in all resilient products and can vary significantly from piece to piece. Samples should be used to assess color.

V1



Uniform Appearance

V2



Slight Variation

V3



Moderate Variation

V4



Substantial Variation

