

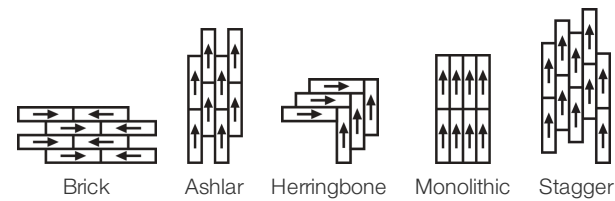
## Coded

Coleção	<b>Dialogue</b>	
Número Do Produto	<b>4143V</b>	
Construção	<b>Heavy Commercial Luxury Vinyl Tile</b>	
classe	<b>Class III, Type B</b>	
Acabamento	<b>ExoGuard+®</b>	
	U.s.	Metric
Dimensões Nominais	<b>6 in w x 48 in l</b>	<b>15 cm w x 122 cm l</b>
Dimensões Reais	<b>5.96 in w x 48.00 in l</b>	<b>15.14 cm w x 121.92 cm l</b>
Espessura Da Camada De Uso	<b>20 mil (0.02 in)</b>	<b>0.51 mm</b>
Espessura Total Do Produto	<b>0.197 in</b>	<b>5 mm</b>
Perfil De Borda	<b>Borda Quadrada</b>	
Installation Type	<b>Dry Back</b>	
Instalação	<b>Direct Glue</b>	
Adesivo Recomendado	<b>S150-95 Resilient Tile Spray, , 4200 Resilient Tile 4 Gallon, 2200 Semi-Wet Resilient 4 Gallon Pail, 2200 Semi-Wet Resilient 1 Gallon Pail, or 4151 Multi-Use Premium 4 Gallon</b>	

## Empacotamento

Peças Por Caixa	<b>11 pcs</b>	
Área Por Caixa	<b>21.85 sq ft</b>	<b>2.03 sq m</b>
Peso Por Caixa	<b>37.13 lbs</b>	<b>16.84 kg</b>

## Método De Instalação Recomendado



## Produtos Coordenados

LVT: Type

Carpet Tile: Face To Face Tile, Spoken Tile, Written Tile, Translate Tile, Subtext Tile



desempenho + teste

carga estática (ASTM F970)	<b>Passes (Modified), *1500 lbs</b>	*This test is intended to compare relative properties of different styles and constructions. Results are based on a laboratory test and used for comparative purposes - real life load limit may vary.
resistência ao calor (ASTM F1514)	<b>Passes</b>	
resistência à luz (ASTM F1515)	<b>Passes</b>	
resistência a produtos químicos (ASTM F925)	<b>Passes</b>	
painel radiante (ASTM E648)	<b>Passes, Class I</b>	
		Test Reports may be included or listed by the manufacturing/inventory style number as opposed to the noted selling style number.

Garantias

[15 Anos Comercial Limitada](#)  
[Commercial 15 Year Underbed Bond Warranty](#)

Diversity & Inclusion

We promote supplier participation that is reflective of Shaw Industries' diverse customer base and local community. We believe having a strong Supplier Diversity Program is strategic for bringing more innovation to our businesses and opening new markets for growth.

Atributos + Certificações

Health & Wellbeing	
Material Ingredient Transparency	Health Product Declaration (HPD)   1000 ppm Disclosure
Indoor Air Quality	FloorScore®   Certificado
Climate Impact	
Environmental Product Declaration (EPD)	3rd Party Certified De Acordo Com ISO 14025, EN 15804, & ISO 21930:2017
Embodied Carbon (Cradle to Gate)	9.59 Kg Co <sub>2</sub> /M <sup>2</sup>
Total Recycled Content	30% (Pre-Consumer 30%   Post-Consumer 0%)
Global Product Assessment	
Environmental Guarantee*   Through Our Environmental Guarantee, Shaw Pledges to Transport And Recycle Any Shaw Manufactured Resilient Within The United States And Canada At No Cost to The Customer.	
CE Marking (EN 14041)   Certificado 3rd Party	
Country of Origin   United States	

WELL V2 Contribution Credit

X01 Fundamental Material Precautions Part 1: (C): Restrict Asbestos Precondition	<b>Absence of Asbestos</b>
X08 Hazardous Material Reduction Part 1: Limit Hazardous Materials Optimization – 1 pt	<b>Absence of Heavy Metals</b>
X10 Volatile Compound Reduction Part 1 (A): Manage Volatile Organic Compounds (VOCs) Optimization – 1 pt	<b>Absence of Halogenated Flame Retardants</b>
Part 2: Manage Semi-Volatile Organic Compounds (SVOCs) Optimization – 1 pt	<b>Ortho-Phthalates</b>
X11 Long Term Emissions Control Part 2: Flooring Optimization – 1 pt	<b>FloorScore Certificate</b>
X14 Material Transparency Part 1: Promote Ingredient Disclosure Optimization – max 2 pts	<b>Health Product Declaration (HPD)   1000 Ppm Disclosure</b>

## Crédito De Contribuição

MR Credit: Divulgação e otimização de produtos de construção  
Ingredientes materiais - Opção 1: Relatório de ingredientes materiais

MR Credit: Divulgação e otimização de produtos de construção  
Declarações ambientais do produto - Opção 1: Declaração ambiental do produto (EPD)

Crédito de EQ: Materiais de baixa emissão  
Opção 1: cálculos de categoria de produto

## Health Product Declaration (HPD) | 1000 Ppm Disclosure

**3rd Party Certified in Accordance with ISO 14025, EN 15804, & ISO 21930:2017**

**FloorScore® Certified**

## Informação Adicional

\* To learn more about the recyclability of our products and our Environmental Guarantee, please visit [shawcontract.com/sustainability](https://shawcontract.com/sustainability).

[Installation Guidelines](#)

[Maintenance Guidelines](#)

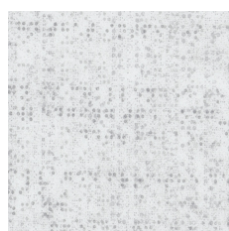
Please visit [www.shawcontract.com](https://www.shawcontract.com) for the most current warranty information.

Specifications are subject to nominal manufacturing variance. Material supply and/or manufacturing processes may necessitate changes without notice.

This product is an exclusive design and may not be duplicated in any manner. Use of this design in the creation of another product design is also strictly prohibited.

Visit [shawcontract.com/testing](https://shawcontract.com/testing) for more information.

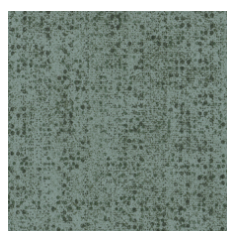
## Available Colorways



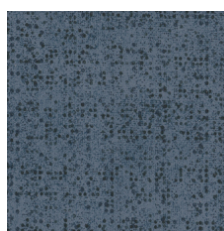
Converse 43100  
V2 - Slight Variation



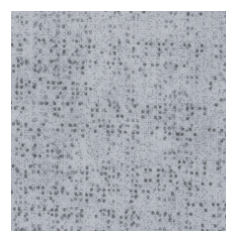
Relate 43210  
V2 - Slight Variation



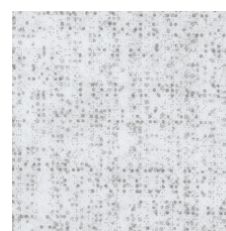
Connect 43375  
V2 - Slight Variation



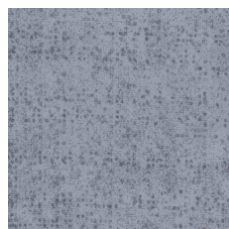
Inform 43429  
V2 - Slight Variation



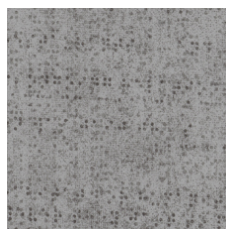
Declare 43504  
V2 - Slight Variation



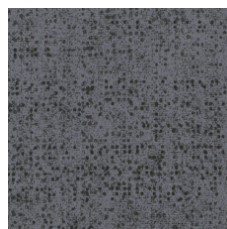
Convey 43515  
V2 - Slight Variation



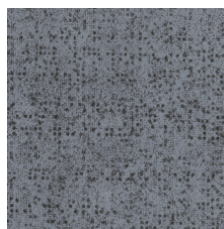
Imply 43518  
V2 - Slight Variation



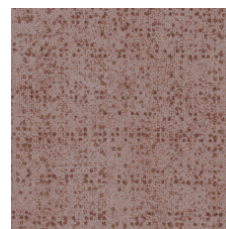
Describe 43530  
V2 - Slight Variation



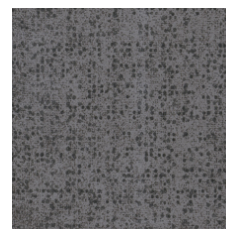
Share 43585  
V2 - Slight Variation



Engage 43595  
V2 - Slight Variation



Fluent 43715  
V2 - Slight Variation



Interpret 43761  
V2 - Slight Variation

## Color and Visual Variation Index

Shade and texture variation is inherent in all resilient products and can vary significantly from piece to piece. Samples should be used to assess color.

V1



Uniform Appearance

V2



Slight Variation

V3



Moderate Variation

V4



Substantial Variation

