

Compound 5.0

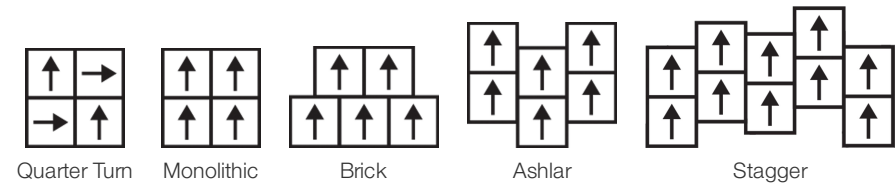
Collection	Compound + Cast	
Style Number	4077V	
Construction	Heavy Commercial Luxury Vinyl Tile	
Class / ASTM F1700	Class III, Type B	
Finish	ExoGuard+®	
	U.S.	Metric
Nominal Dimensions	24 in w x 24 in l	61 cm w x 61 cm l
Actual Dimensions	24.00 in w x 24.00 in l	60.96 cm w x 60.96 cm l
Wear Layer Thickness	20 mil (0.02 in)	0.51 mm
Overall Thickness	0.197 in	5 mm
Edge Profile	Squared Edge	
Installation	Direct Glue	
Recommended Adhesive	S150-95 Resilient Tile Spray, , 4200 Resilient Tile 4 Gallon, 2200 Semi-Wet Resilient 4 Gallon Pail, 2200 Semi-Wet Resilient 1 Gallon Pail, or 4151 Multi-Use Premium 4 Gallon	

Packaging

Pieces per Carton	8 pcs	
Area per Carton	32 sq ft	2.97 sq m
Weight per Carton	54.4 lbs	24.68 kg



Recommended Installation Method



Coordinating Products

LVT: Compound 2.5 Mm, Cast 2.5 Mm, Cast 5.0 Mm

Performance + Testing

Static Load (ASTM F970)	Passes
Residual Indentation (ASTM F1914)	Passes
Resistance to Heat (ASTM F1514)	Passes
Resistance to Light (ASTM F1515)	Passes
Resistance to Chemicals (ASTM F925)	Passes
Radiant Panel (ASTM E648)	Passes, Class I
Coefficient of Friction (ASTM D2047, Slip Resistance)	≥0.5, meets the recommended static coefficient of friction for ADA walking surfaces

Test Reports may be included or listed by the manufacturing/inventory style number as opposed to the noted selling style number.

Warranties

[15 Year Commercial Limited Warranty](#)  
[Commercial 15 Year Underbed Bond Warranty](#)

Diversity & Inclusion

We believe all humans are equal. Individually and collectively, we need to proactively create and promote opportunities that give everybody an equal footing in life. We nurture an environment where every voice and perspective can be heard, and proactively promote accessibility and inclusivity inside our network and beyond. One proof point is our ability to meet the criteria of the Social Fairness pillar of the Cradle to Cradle Product Standard. At Shaw Industries, we promote supplier participation that is reflective of Shaw's diverse customer base and local community. More than 42% of our spend\*\*\*\*\* is with small and diverse businesses. We believe having a strong Supplier Diversity Program is strategic for bringing more innovation to our businesses and openingnew markets for growth.

Material Health & Environmental Certifications

Health & Wellbeing

Material Ingredient Transparency  
Indoor Air Quality

Health Product Declaration (HPD) | 1000 ppm Disclosure  
FloorScore® | Certified

Climate Impact

Environmental Product Declaration (EPD)  
  
Total Recycled Content

3rd Party Certified in Accordance with ISO 14025, EN 15804, & ISO 21930:2017  
  
30% (Pre-Consumer 30% | Post-Consumer 0%)

Global Product Assessment

Environmental Guarantee\* | Through Our Environmental Guarantee, Shaw Pledges to Transport And Recycle Any Shaw Manufactured Resilient Within The United States And Canada At No Cost to The Customer.

GSA | Approved

CE Marking (EN 14041) | 3rd Party Certified

Country of Origin | United States

WELL V2 Contribution Credit

X01 Fundamental Material Precautions Part 1: (C): Restrict Asbestos Precondition	<b>Absence of Asbestos</b>
X08 Hazardous Material Reduction Part 1: Limit Hazardous Materials Optimization	<b>Absence of Heavy Metals</b>
X10 Volatile Compound Reduction Part 1 (A): Manage Volatile Organic Compounds (VOCs) Optimization	<b>Absence of Halogenated Flame Retardants</b>
X10 Volatile Compound Reduction Part 2: Manage Semi-Volatile Organic Compounds (SVOCs) Optimization	<b>Ortho-Phthalates</b>
X11 Long Term Emissions Control Part 2: Flooring Optimization	<b>FloorScore Certificate</b>

## Leed v4 Contribution Credits

MR Credit: Building Product Disclosure and Optimization  
Material Ingredients - Option 1: Material Ingredient Reporting

MR Credit: Building Product Disclosure and Optimization  
Environmental Product Declarations - Option 1: Environmental Product Declaration (EPD)

EQ Credit: Low Emitting Materials  
Option 1: Product Category Calculations

**Health Product Declaration (HPD) | 100 Ppm Disclosure**

**3rd Party Certified in Accordance with ISO 14025, EN 15804, & ISO 21930:2017**

**FloorScore Certified**

## Additional Information

\* To learn more about the recyclability of our products and our Environmental Guarantee, please visit [shawcontract.com/sustainability](https://shawcontract.com/sustainability).

[Installation Guidelines](#)

[Maintenance Guidelines](#)

Please visit [www.shawcontract.com](https://www.shawcontract.com) for the most current warranty information.

Specifications are subject to nominal manufacturing variance. Material supply and/or manufacturing processes may necessitate changes without notice.

This product is an exclusive design and may not be duplicated in any manner. Use of this design in the creation of another product design is also strictly prohibited.

\*\*\*\*\*Allowable spend is domestic (US) spend in categories in which we have diverse suppliers from which to choose. Compared to non-allowable spend which includes categories in which we do not have domestic, small or diverse suppliers available to meet our needs.

Visit [shawcontract.com/testing](https://shawcontract.com/testing) for more information.

## Available Colorways



Relief 77111  
LRV 27.6 | L\* 59.55  
V2 - Slight Variation



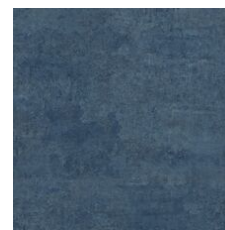
Origin 77114  
LRV 39.4 | L\* 69.03  
V2 - Slight Variation



Patina 77405  
LRV 14.4 | L\* 44.79  
V2 - Slight Variation



Beryl 77429  
LRV 13.1 | L\* 42.97  
V2 - Slight Variation



Azure 77436  
LRV 13.8 | L\* 43.98  
V2 - Slight Variation



Base 77504  
LRV 29.7 | L\* 61.40  
V2 - Slight Variation



Threshold 77515  
LRV 45.5 | L\* 73.20  
V2 - Slight Variation



Elevate 77518  
LRV 24.3 | L\* 56.41  
V2 - Slight Variation



Chisel 77520  
LRV 26.2 | L\* 58.22  
V2 - Slight Variation



Onset 77525  
LRV 36.2 | L\* 66.70  
V2 - Slight Variation



Foundation 77530  
LRV 15.2 | L\* 45.93  
V2 - Slight Variation



Granite 77585  
LRV 12.4 | L\* 41.83  
V2 - Slight Variation



Bisque 77620  
LRV 23.2 | L\* 55.31  
V2 - Slight Variation



Terra Cotta 77715  
LRV 14.9 | L\* 45.43  
V2 - Slight Variation

Color and Visual Variation Index

Shade and texture variation is inherent in all resilient products and can vary significantly from piece to piece. Samples should be used to assess color.

