

Basis

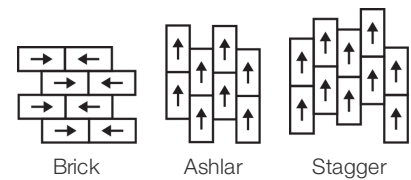
Colección	Mineralfloor	
Número De Estilo	4339V	
Construcción	Rigid Mineral Core With Inline Level Edge Profile	
clase	Class I, Type B	
	U.s.	Metric
Dimensiones Nominales	12 in w x 23 in l	30 cm w x 60 cm l
Dimensiones Reales	11.73 in w x 23.46 in l	29.79 cm w x 59.59 cm l
Espesor Total Del Producto	0.236 in	6 mm
Perfil De Borde	Biselado	
Installation Type	InLine Level Edge	
Instalación	Direct Glue	
Adhesivo Recomendado	3 in 1 Ultra Rigid Mineral Core 4 Gallon	

Embalaje

Piezas Por Caja	12 pcs	
Área Por Caja	22.94 sq ft	2.13 sq m
Peso Por Caja	40.34 lbs	18.3 kg



Método De Instalación Recomendado



Productos Que Combinan

Rigid Core: Origin

Desempeño + Pruebas

Margen Adicional Residual (Astm F1914)	Passes
Resistencia Al Calor (Astm F1514)	Passes
Resistencia A La Luz (Astm F1515)	Passes
Resistencia A Productos Químicos (Astm F925)	Passes
Panel Radiante (Astm E648)	Passes, Class I
Coefficiente De Fricción (Astm D2407, Resistencia Al Deslizamiento)	≥0.5, meets the recommended static coefficient of friction for ADA walking surfaces

Test Reports may be included or listed by the manufacturing/inventory style number as opposed to the noted selling style number.

Garantías

[15 Años Limitado A Uso Comercial](#)

Atributos + Certificaciones

Health & Wellbeing

Indoor Air Quality

FloorScore® | Certificado

Climate Impact

Total Recycled Content

0% (Pre-Consumer 0% | Post-Consumer 0%)

Global Product Assessment

Country of Origin | China

Contribución Para Créditos Leed

Crédito MR: Divulgación y optimización de productos de construcción
Declaraciones ambientales de productos - Opción 1: Declaración ambiental de productos (EPD)

3rd Party Certified in Accordance with ISO 14025, EN 15804, & ISO 21930:2017

Crédito EQ: Materiales de baja emisión
Opción 1: Cálculos de categoría de producto

FloorScore Certified

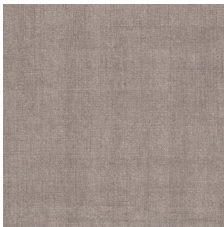
[Installation Guidelines](#)
[Maintenance Guidelines](#)

Please visit www.shawcontract.com for the most current warranty information.
Specifications are subject to nominal manufacturing variance. Material supply and/or manufacturing processes may necessitate changes without notice.

This product is an exclusive design and may not be duplicated in any manner. Use of this design in the creation of another product design is also strictly prohibited.
*****Allowable spend is domestic (US) spend in categories in which we have diverse suppliers from which to choose. Compared to non-allowable spend which includes categories in which we do not have domestic, small or diverse suppliers available to meet our needs.

Visit shawcontract.com/testing for more information.

Available Colorways



Formation 39155
V2 - Slight Variation



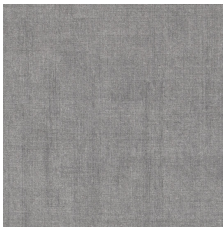
Elaborate 39504
V2 - Slight Variation



Intrinsic 39520
V2 - Slight Variation



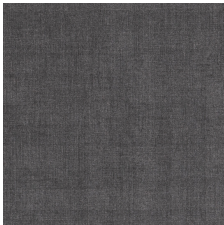
Configuration 39530
V2 - Slight Variation



Actualize 39535
V2 - Slight Variation



Matrix 39585
V2 - Slight Variation



Source 39595
V2 - Slight Variation

Color and Visual Variation Index

Shade and texture variation is inherent in all resilient products and can vary significantly from piece to piece. Samples should be used to assess color.

