

Innate Linen Sheet

Collection	Innate + In Tandem	
Style Number	4366V	
Welding Rod Style Number	270VS	
Construction	Comm Bio-Based Polyurethane Het Sheet W/Fiberglass	
class	Tested To ASTM 1303	
Finish	ExoGuard+®	
	U.s.	Metric
Overall Product Thickness	0.098 in	2.5 mm
Installation Type	Dry Back	
Installation	Direct Glue	
Recommended Adhesive	4200 Resilient Sheet 4 Gallon or 4151 Multi-Use Premium 4 Gallon	

Packaging

Actual Roll Size	6.59 ft w x 65.62 ft l	2.01 m w x 20.00 m l
Area Per Roll	48.08 sy/roll	40.2 sq m/roll
Weight Per Roll	321.88 lbs	146 kg



Recommended Installation Method



Non Reverse

Coordinating Products

PVC-Free: Innate, In Tandem Sheet, In Tandem, Innate Sheet, Innate Stria Tile

performance + testing

static load (ASTM F970)	Passes (Modified), *1500 lbs	*This test is intended to compare relative properties of different styles and constructions. Results are based on a laboratory test and used for comparative purposes - real life load limit may vary.
residual indentation (ASTM F1914)	Passes	
Flexibility (ASTM F137)	Passes	
resistance to heat (ASTM F1514)	Passes	
resistance to light (ASTM F1515)	Passes	
resistance to chemicals (ASTM F925)	Passes	
radiant panel (ASTM E648)	Passes, Class I	
coefficient of friction (ASTM D2407, slip resistance)	≥0.5, meets the recommended static coefficient of friction for ADA walking surfaces	

Test Reports may be included or listed by the manufacturing/inventory style number as opposed to the noted selling style number.

Warranties

[15 Year Commercial Limited](#)  
[Commercial 15 Year Underbed Bond Warranty](#)

Attributes + Certifications

Health & Wellbeing	
Material Ingredient Transparency	Cradle to Cradle Certified™   Silver Level (Version 3.1) Health Product Declaration (HPD)   1000 ppm Disclosure Declare   LBC Compliant
Indoor Air Quality	FloorScore®   Certified
Climate Impact	
Environmental Product Declaration (EPD)	3rd Party Certified in Accordance with EN 15804, ISO 14025
Embodied Carbon (Cradle to Gate)	2.76 Kg Co <sub>2</sub> /M <sup>2</sup>
Life-Cycle Carbon Emissions	Carbon Neutral
Total Recycled Content	0% (Pre-Consumer 0%   Post-Consumer 0%)
Global Product Assessment	
	CE Marking (EN 14041)   3rd Party Certified Country of Origin   Imported

WELL V2 Contribution Credit

X01 Fundamental Material Precautions Part 1: (C): Restrict Asbestos Precondition	C2C Silver Level (Version 3.1)
X08 Hazardous Material Reduction Part 1: Limit Hazardous Materials Optimization – 1 pt	C2C Silver Level (Version 3.1)
X10 Volatile Compound Reduction Part 1 (A): Manage Volatile Organic Compounds (VOCs) Optimization – 1 pt	C2C Silver Level (Version 3.1)
Part 2: Manage Semi-Volatile Organic Compounds (SVOCs) Optimization – 1 pt	C2C Silver Level (Version 3.1)
X11 Long Term Emissions Control Part 2: Flooring Optimization – 1 pt	Floorscore
X13 Enhanced Material Precaution Part 1: Select Optimized Materials Optimization – max 2 pts	C2C Silver Level (Version 3.1)
X14 Material Transparency Part 1: Promote Ingredient Disclosure Optimization – max 2 pts	C2C Silver Level (Version 3.1)

## Green Leed Contribution Credit

MR Credit: Building Product Disclosure and Optimization  
Material Ingredients - Option 1: Material Ingredient Reporting

MR Credit: Building Product Disclosure and Optimization  
Material Ingredients - Option 2: Material Ingredient Optimization

MR Credit: Building Product Disclosure and Optimization  
Environmental Product Declarations - Option 1: Environmental Product Declaration (EPD)

MR Credit: Building Product Disclosure and Optimization  
Sourcing of Raw Materials - Option 2: Leadership Extraction Practices

EQ Credit: Low Emitting Materials  
Option 1: Product Category Calculations

[Installation Guidelines](#)

**Health Product Declaration (HPD) | 100 Ppm Disclosure**

**C2C Silver Level (Version 3.1)**

**3rd Party Certified in Accordance with EN 15804, ISO 14025**

**Bio-Based Materials - Meets Astm D6866 And ISO 16620-2**

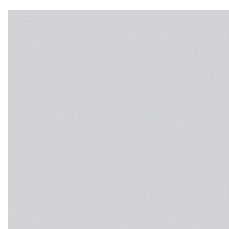
**FloorScore® Certified**

Please visit [www.shawcontract.com](http://www.shawcontract.com) for the most current warranty information. Specifications are subject to nominal manufacturing variance. Material supply and/or manufacturing processes may necessitate changes without notice.

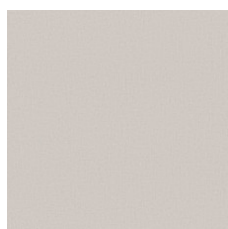
This product is an exclusive design and may not be duplicated in any manner. Use of this design in the creation of another product design is also strictly prohibited.

Visit [shawcontract.com/testing](http://shawcontract.com/testing) for more information.

## Available Colorways



Air 66104  
Weldrod 00100



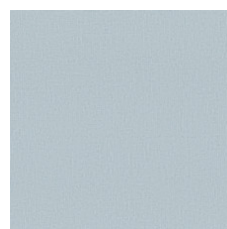
Sand 66105  
Weldrod 00101



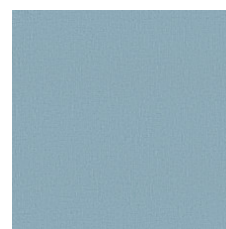
Bare 66111  
Weldrod 00111



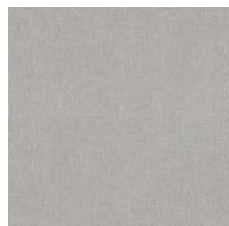
Earth 66130  
Weldrod 00126



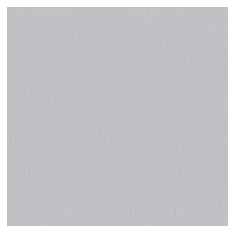
Shore 66405  
Weldrod 00405



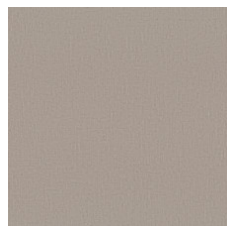
Sea 66416  
Weldrod 00416



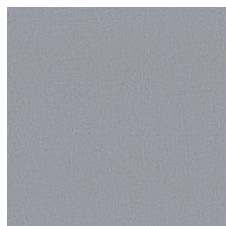
Loam 66504  
Weldrod 00504



Fog 66515  
Weldrod 00506



Native 66516  
Weldrod 00516



Serene 66518  
Weldrod 00518

