

Function 2.5

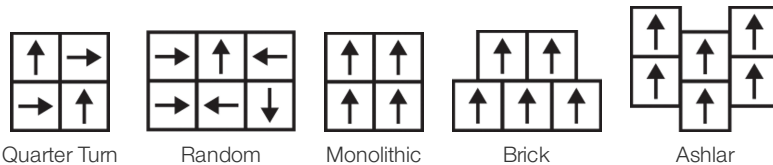
Collection	Function + Flow	
Style Number	4386V	
Construction	Commercial Luxury Vinyl Tile	
Class / ASTM F1700	Class III, Type B	
Finish	ExoGuard+®	
	U.s.	Metric
Nominal Dimensions	18 in w x 18 in l	46 cm w x 46 cm l
Actual Dimensions	18.00 in w x 18.00 in l	45.72 cm w x 45.72 cm l
Wear Layer Thickness	22 mil (0.022 in)	0.56 mm
Overall Thickness	0.098 in	2.5 mm
Installation Type	Dry Back	
Installation	Direct Glue	
Recommended Adhesive	S150-95 Resilient Tile Spray, , 4200 Resilient Tile 4 Gallon, 2200 Semi-Wet Resilient 4 Gallon Pail, 2200 Semi-Wet Resilient 1 Gallon Pail, or 4151 Multi-Use Premium 4 Gallon	

Packaging

Pieces Per Carton	20 pcs	
Area Per Carton	45 sq ft	4.18 sq m
Weight Per Carton	40.15 lbs	18.21 kg



Recommended Installation Method



Coordinating Products

LVT: Flow 2.5, Flow 5.0, Function 5.0, Flow 5.0 Lit

Performance + Testing

Static Load (ASTM F970)	Passes (Modified), *1500 lbs	*This test is intended to compare relative properties of different styles and constructions. Results are based on a laboratory test and used for comparative purposes - real life load limit may vary.
Residual Indentation (ASTM F1914)	Passes	
Resistance to Heat (ASTM F1514)	Passes	
Resistance to Light (ASTM F1515)	Passes	
Resistance to Chemicals (ASTM F925)	Passes	
Radiant Panel (ASTM E648)	Passes, Class I	
coefficient of friction (ASTM D2407, slip resistance)	≥0.5, meets the recommended static coefficient of friction for ADA walking surfaces	
Test Reports may be included or listed by the manufacturing/inventory style number as opposed to the noted selling style number.		

Warranties

15 Year Commercial Limited

Diversity & Inclusion

We promote supplier participation that is reflective of Shaw Industries' diverse customer base and local community. We believe having a strong Supplier Diversity Program is strategic for bringing more innovation to our businesses and opening new markets for growth.

Material Health & Environmental Certifications

Health & Wellbeing	
Indoor Air Quality	FloorScore® Certified
Climate Impact	
Environmental Product Declaration (EPD)	3rd Party Certified in Accordance with ISO 14025, EN 15804, & ISO 21930:2018
Embodied Carbon (Cradle to Gate)	9.7 Kg Co ₂ /M ²
Total Recycled Content	0% (Pre-Consumer 0% Post-Consumer 0%)
Global Product Assessment	Country of Origin China

WELL V2 Contribution Credit

X01 Fundamental Material Precautions Part 1: (C): Restrict Asbestos Precondition	Absence of Asbestos
X08 Hazardous Material Reduction Part 1: Limit Hazardous Materials Optimization – 1 pt	Absence of Heavy Metals
X10 Volatile Compound Reduction Part 1 (A): Manage Volatile Organic Compounds (VOCs) Optimization – 1 pt	Absence of Halogenated Flame Retardants
Part 2: Manage Semi-Volatile Organic Compounds (SVOCs) Optimization – 1 pt	Ortho-Phthalates
X11 Long Term Emissions Control Part 2: Flooring Optimization – 1 pt	FloorScore Certificate

Green Leed Contribution Credit

MR Credit: Building Product Disclosure and Optimization
Environmental Product Declarations - Option 1: Environmental Product Declaration (EPD)

EQ Credit: Low Emitting Materials
Option 1: Product Category Calculations

[Installation Guidelines](#)

[Maintenance Guidelines](#)

3rd Party Certified in Accordance with ISO 14025, EN 15804, & ISO 21930:2018

FloorScore® Certified

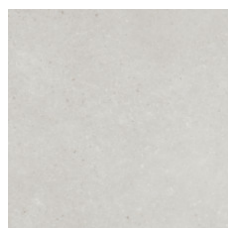
Please visit www.shawcontract.com for the most current warranty information.

Specifications are subject to nominal manufacturing variance. Material supply and/or manufacturing processes may necessitate changes without notice.

This product is an exclusive design and may not be duplicated in any manner. Use of this design in the creation of another product design is also strictly prohibited.

Visit shawcontract.com/testing for more information.

Available Colorways



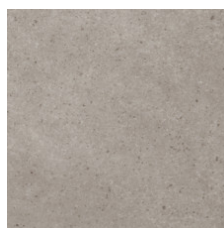
Silica 86100
LRV 57 | L* 80.17
V2 - Slight Variation



Uniform 86120
LRV 36.6 | L* 67.01
V2 - Slight Variation



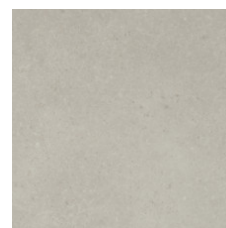
Transition 86501
LRV 42.4 | L* 71.15
V2 - Slight Variation



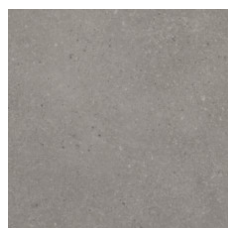
Pebble 86504
LRV 39.9 | L* 69.43
V2 - Slight Variation



Composite 86506
LRV 25.9 | L* 57.91
V2 - Slight Variation



Blend 86515
LRV 45.5 | L* 73.25
V2 - Slight Variation



Change 86520
LRV 23.5 | L* 55.58
V2 - Slight Variation

Color and Visual Variation Index

Shade and texture variation is inherent in all resilient products and can vary significantly from piece to piece. Samples should be used to assess color.

V1



Uniform Appearance

V2



Slight Variation

V3



Moderate Variation

V4



Substantial Variation

