

Function 2.5

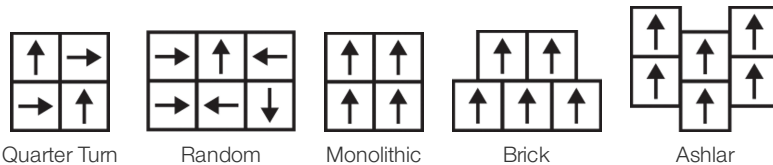
Coleção	Function + Flow	
Número Do Produto	4386V	
Construção	Vinílico De Luxo Em Régua (Lvt) Comercial	
classe	Class III, Type B	
Acabamento	ExoGuard+®	
	U.s.	Metric
Dimensões Nominais	18 in w x 18 in l	46 cm w x 46 cm l
Dimensões Reais	18.00 in w x 18.00 in l	45.72 cm w x 45.72 cm l
Espessura Da Camada De Uso	22 mil (0.022 in)	0.56 mm
Espessura Total Do Produto	0.098 in	2.5 mm
Installation Type	Dry Back	
Instalação	Direct Glue	
Adesivo Recomendado	S150-95 Resilient Tile Spray, , 4200 Resilient Tile 4 Gallon, 2200 Semi-Wet Resilient 4 Gallon Pail, 2200 Semi-Wet Resilient 1 Gallon Pail, or 4151 Multi-Use Premium 4 Gallon	

Empacotamento

Peças Por Caixa	20 pcs	
Área Por Caixa	45 sq ft	4.18 sq m
Peso Por Caixa	40.15 lbs	18.21 kg



Método De Instalação Recomendado



Produtos Coordenados

LVT: Flow 2.5, Flow 5.0, Function 5.0, Flow 5.0 Lt

desempenho + teste

carga estática (ASTM F970)	Passes (Modified), *1500 lbs	*This test is intended to compare relative properties of different styles and constructions. Results are based on a laboratory test and used for comparative purposes - real life load limit may vary.
recuo residual (ASTM F1914)	Passes	
resistência ao calor (ASTM F1514)	Passes	
resistência à luz (ASTM F1515)	Passes	
resistência a produtos químicos (ASTM F925)	Passes	
painel radiante (ASTM E648)	Passes, Class I	
coeficiente de atrito (ASTM D2407, resistência ao deslizamento)	≥0.5, meets the recommended static coefficient of friction for ADA walking surfaces	
Test Reports may be included or listed by the manufacturing/inventory style number as opposed to the noted selling style number.		

Garantias

15 Anos Comercial Limitada

Diversity & Inclusion

We promote supplier participation that is reflective of Shaw Industries' diverse customer base and local community. We believe having a strong Supplier Diversity Program is strategic for bringing more innovation to our businesses and opening new markets for growth.

Atributos + Certificações

Health & Wellbeing	
Indoor Air Quality	FloorScore® Certificado
Climate Impact	
Environmental Product Declaration (EPD)	3rd Party Certified in Accordance with ISO 14025, EN 15804, & ISO 21930:2018
Embodied Carbon (Cradle to Gate)	9.7 Kg Co ₂ /M ²
Total Recycled Content	0% (Pre-Consumer 0% Post-Consumer 0%)
Global Product Assessment	Country of Origin China

WELL V2 Contribution Credit

X01 Fundamental Material Precautions Part 1: (C): Restrict Asbestos Precondition	Absence of Asbestos
X08 Hazardous Material Reduction Part 1: Limit Hazardous Materials Optimization – 1 pt	Absence of Heavy Metals
X10 Volatile Compound Reduction Part 1 (A): Manage Volatile Organic Compounds (VOCs) Optimization – 1 pt	Absence of Halogenated Flame Retardants
Part 2: Manage Semi-Volatile Organic Compounds (SVOCs) Optimization – 1 pt	Ortho-Phthalates
X11 Long Term Emissions Control Part 2: Flooring Optimization – 1 pt	FloorScore Certificate

Crédito De Contribuição

MR Credit: Divulgação e otimização de produtos de construção
Declarações ambientais do produto - Opção 1: Declaração ambiental do produto (EPD)

Crédito de EQ: Materiais de baixa emissão
Opção 1: cálculos de categoria de produto

[Installation Guidelines](#)

[Maintenance Guidelines](#)

3rd Party Certified in Accordance with ISO 14025, EN 15804, & ISO 21930:2018

FloorScore® Certified

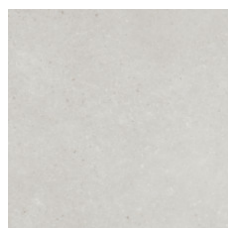
Please visit www.shawcontract.com for the most current warranty information.

Specifications are subject to nominal manufacturing variance. Material supply and/or manufacturing processes may necessitate changes without notice.

This product is an exclusive design and may not be duplicated in any manner. Use of this design in the creation of another product design is also strictly prohibited.

Visit shawcontract.com/testing for more information.

Available Colorways



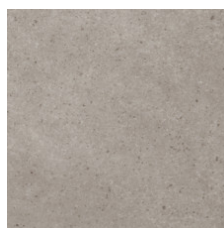
Silica 86100
LRV 57 | L* 80.17
V2 - Slight Variation



Uniform 86120
LRV 36.6 | L* 67.01
V2 - Slight Variation



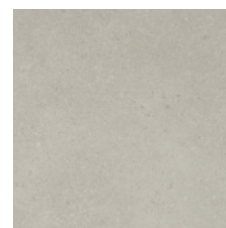
Transition 86501
LRV 42.4 | L* 71.15
V2 - Slight Variation



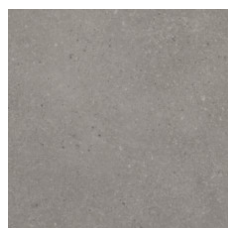
Pebble 86504
LRV 39.9 | L* 69.43
V2 - Slight Variation



Composite 86506
LRV 25.9 | L* 57.91
V2 - Slight Variation



Blend 86515
LRV 45.5 | L* 73.25
V2 - Slight Variation



Change 86520
LRV 23.5 | L* 55.58
V2 - Slight Variation

Color and Visual Variation Index

Shade and texture variation is inherent in all resilient products and can vary significantly from piece to piece. Samples should be used to assess color.

