

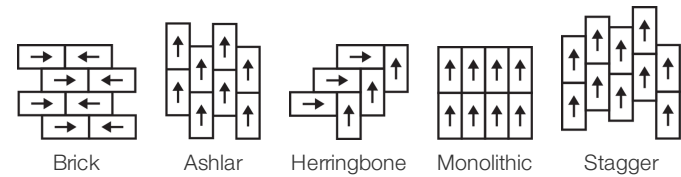
Terrace 5.0 Mm

Collection	Terasu	
Style Number	4216V	
Construction	Heavy Commercial Luxury Vinyl Tile	
class	Class III, Type B	
Finish	ExoGuard+®	
	U.s.	Metric
Nominal Dimensions	12 in w x 24 in l	30 cm w x 60 cm l
Actual Dimensions	11.81 in w x 23.62 in l	30.00 cm w x 59.99 cm l
Wear Layer Thickness	20 mil (0.02 in)	0.51 mm
Overall Product Thickness	0.197 in	5 mm
Edge Profile	Squared Edge	
Installation	Direct Glue	
Recommended Adhesive	S150 Resilient Sheet Spray 1 Can, , 4200 Resilient Tile 4 Gallon, 2200 Semi-Wet Resilient 4 Gallon Pail, 2200 Semi-Wet Resilient 1 Gallon Pail, or 4151 Multi-Use Premium 4 Gallon	

Packaging

Pieces Per Box	11 pcs	
Area Per Box	21.31 sq ft	1.98 sq m
Weight Per Box	41.9 lbs	19.01 kg

Recommended Installation Method



Coordinating Products

LVT: Terrace 2.5 Mm  
Sheet: Tatami Sheet, Reed Sheet, Roji Sheet  
Carpet Tile: Botan Tile, Hana Tile, Kusa Tile  
Broadloom: Botan, Hana, Kusa

performance + testing

residual indentation (ASTM F1914)	Passes
resistance to heat (ASTM F1514)	Passes
resistance to light (ASTM F1515)	Passes
resistance to chemicals (ASTM F925)	Passes
radiant panel (ASTM E648)	Passes, Class I
coefficient of friction (ASTM D2407, slip resistance)	>0.6, meets the recommended static coefficient of friction for ADA walking surfaces and accessible routes

Test Reports may be included or listed by the manufacturing/inventory style number as opposed to the noted selling style number.

Warranties

[15 Year Commercial Limited](#)  
[Commercial 15 Year Underbed Bond Warranty](#)

Diversity & Inclusion

We promote supplier participation that is reflective of Shaw Industries' diverse customer base and local community. We believe having a strong Supplier Diversity Program is strategic for bringing more innovation to our businesses and opening new markets for growth.

Attributes + Certifications

Health & Wellbeing	
Material Ingredient Transparency	Health Product Declaration (HPD)   1000 ppm Disclosure
Indoor Air Quality	FloorScore®   Certified
Climate Impact	
Environmental Product Declaration (EPD)	3rd Party Certified in Accordance with ISO 14025, EN 15804, & ISO 21930:2017
Embodied Carbon (Cradle to Gate)	6.05 Kg CO <sub>2</sub> /M <sup>2</sup>
Total Recycled Content	0% (Pre-Consumer 0%   Post-Consumer 0%)
Global Product Assessment	
	CE Marking (EN 14041)   3rd Party Certified
	Country of Origin   Imported

WELL V2 Contribution Credit

X01 Fundamental Material Precautions Part 1: (C): Restrict Asbestos Precondition	<b>Absence of Asbestos</b>
X08 Hazardous Material Reduction Part 1: Limit Hazardous Materials Optimization – 1 pt	<b>Absence of Heavy Metals</b>
X10 Volatile Compound Reduction Part 1 (A): Manage Volatile Organic Compounds (VOCs) Optimization – 1 pt	<b>Absence of Halogenated Flame Retardants</b>
Part 2: Manage Semi-Volatile Organic Compounds (SVOCs) Optimization – 1 pt	<b>Ortho-Phthalates</b>
X11 Long Term Emissions Control Part 2: Flooring Optimization – 1 pt	<b>FloorScore Certificate</b>

Green Leed Contribution Credit

MR Credit: Building Product Disclosure and Optimization Material Ingredients - Option 1: Material Ingredient Reporting	<b>Health Product Declaration (HPD)   100 Ppm Disclosure</b>
MR Credit: Building Product Disclosure and Optimization Environmental Product Declarations - Option 1: Environmental Product Declaration (EPD)	<b>3rd Party Certified in Accordance with ISO 14025, EN 15804, &amp; ISO 21930:2017</b>
EQ Credit: Low Emitting Materials Option 1: Product Category Calculations	<b>FloorScore® Certified</b>

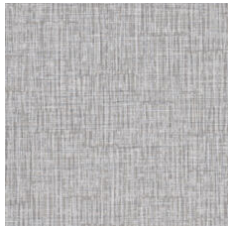
[Installation Guidelines](#)  
[Maintenance Guidelines](#)

Please visit [www.shawcontract.com](http://www.shawcontract.com) for the most current warranty information.  
Specifications are subject to nominal manufacturing variance. Material supply and/or manufacturing processes may necessitate changes without notice.

This product is an exclusive design and may not be duplicated in any manner. Use of this design in the creation of another product design is also strictly prohibited.

Visit [shawcontract.com/testing](http://shawcontract.com/testing) for more information.

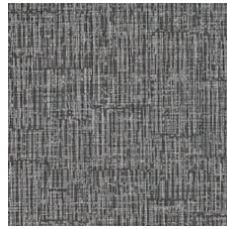
## Available Colorways



Lotus 08111  
V2 - Slight Variation



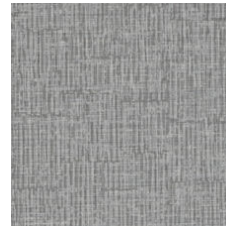
Path 08120  
V2 - Slight Variation



Dusk 08504  
V2 - Slight Variation



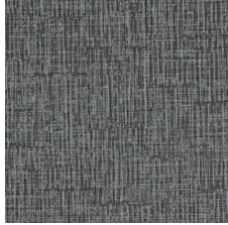
Mist 08510  
V2 - Slight Variation



Heron 08525  
V2 - Slight Variation



Pumice 08540  
V2 - Slight Variation



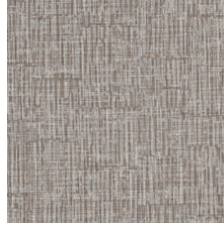
Midnight 08585  
V2 - Slight Variation



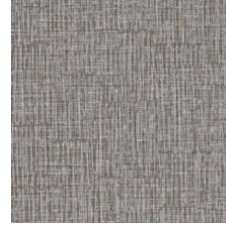
Bonsai 08705  
V2 - Slight Variation



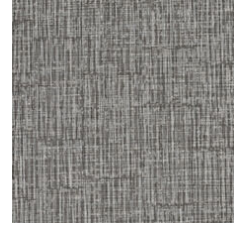
Hashi 08740  
V2 - Slight Variation



Cedar 08755  
V2 - Slight Variation



Brushwood 08765  
V2 - Slight Variation



Alcove 08770  
V2 - Slight Variation

### Color and Visual Variation Index

Shade and texture variation is inherent in all resilient products and can vary significantly from piece to piece. Samples should be used to assess color.

V1



Uniform Appearance

V2



Slight Variation

V3



Moderate Variation

V4



Substantial Variation

