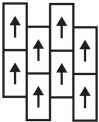


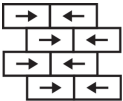
Upbeat Ecoworx® Tile

製品型	Carpet Tile	
コレクション	New Path	
スタイルナンバー	42N8C	
建設	マルチレベル パターンループ	
染色法	100% 原液着色	
一次バックキング	合成	
二次バックキング	Ecoworx®タイル	
保護治療	SSP@shaw 土壌保護保証	
	u.s.	metric
商品のサイズ	18 in x 36 in	46 cm x 91 cm
ボックスあたりの面積	45 ft²	4.18 m²
ボックスあたりの個数	10 pcs	
ゲージ	1/12 in	47.2 per 10 cm
ステッチ	8.0 per in	32.5 per 10 cm
完成した杭の厚さ	0.115 in	2.92 mm
平均密度	5322 oz/yd³	0.197 g/cm³
総厚	0.252 in	6.4 mm
房状の重量	17 oz/yd²	576.4 g/m²

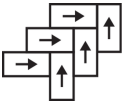
推奨インストール方法



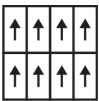
Ashlar



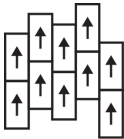
Brick



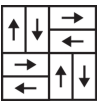
Herringbone



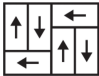
Monolithic



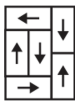
Stagger



Basketweave



Half Basketweave



Boxed In

データ + テスト

錠剤テスト	Pass
放射パネル (astm E648)	Class I
Nbs煙	Less Than 450
静電気の傾向	Less Than 3.5 kv
Cri Green Label Plus (glp)	GLP1263
Adaコンプライアンス	>0.6、ADA 歩行面およびアクセス可能ルート用推奨静摩擦係数の基準に合致***

保証

生涯商用限定保証

コーディネート商品

Carpet Tile: **Positive Ecoworx® Tile, Calm Ecoworx® Tile, Centered Ecoworx® Tile, Upbeat Tile, Positive Tile, Centered Tile, Calm Tile**

属性+認定

Health & Wellbeing

Material Ingredient Transparency

Cradle to Cradle Certified® | Silver Level (Version 4.0)
Health Product Declaration (HPD) | 1,000 ppm 開示
Living Building Challenge (LBC) | レッドリスト記載化学物質無配合
Declare | LBC 準拠
NSF 140 | ゴールド
CRI Green Label Plus (GLP) | GLP1263

Indoor Air Quality

Climate Impact

Environmental Product Declaration (EPD)

Embodied Carbon (Cradle to Gate)

Life-Cycle Carbon Emissions****

Total Recycled Content

Product Packaging

ISO14044、ISO14025 および EN15804 に基づく 第三者認証取得
6.97 kg CO₂/m²
Carbon Neutral
56% (Pre-Consumer 56% | Post-Consumer 0%)
100% リサイクル可能

Global Product Assessment

Singapore Green Label | 認証取得
CE Marking (EN 14041) | 第三者認証取得
Environmental Guarantee* | Re[turn] Reclamation Program* | Through Our Environmental Guarantee, Shaw Pledges to Transport And Recycle Any Ecoworx Carpet.
Country of Origin | 中国**

Well V2 Contribution Credit

X08 Hazardous Material Reduction Part 1: Limit Hazardous Materials Optimization – 1 pt

X10 Volatile Compound Reduction Part 1 (A): Manage Volatile Organic Compounds (VOCs) Optimization – 1 pt

X11 Long Term Emissions Control Part 2: Flooring Optimization – 1 pt

X13 Enhanced Material Precaution Part 1: Select Optimized Materials Optimization – max 2 pts

X14 Material Transparency Part 1: Promote Ingredient Disclosure Optimization – max 2 pts

C2C Silver Level (Version 4.0)

C2C Silver Level (Version 4.0)

Green Label Plus Certification: GLP9968

C2C Silver Level (Version 4.0)

C2C Silver Level (Version 4.0)

グリーンリード貢献クレジット

MRクレジット：製品の開示と最適化の構築
環境製品宣言-オプション1：環境製品宣言（EPD）

MRクレジット：製品の開示と最適化の構築
材料成分-オプション1：材料成分レポート

MRクレジット：製品の開示と最適化の構築
材料成分-オプション2：材料成分の最適化

MRクレジット：製品の開示と最適化の構築
原材料の調達-オプション2：リーダーシップの抽出実践

EQクレジット：低排出材料
オプション1：製品カテゴリの計算

MR Credit: Interiors Life-Cycle Impact Reduction
Option 3: Design for Flexibility

3rd Party Certified in Accordance with ISO14044, ISO14025 & EN15804

C2C Silver Level (Version 4.0) or HPD (Version 2.1)

C2C Silver Level (Version 4.0)

Environmental Guarantee: Re[turn] Reclamation Program* | Through Our Environmental Guarantee, Shaw Pledges to Transport And Recycle Any Ecoworx® Carpet.

Green Label Plus Certification: GLP9968

Ecoworx® Tile with Lokdots Installation System

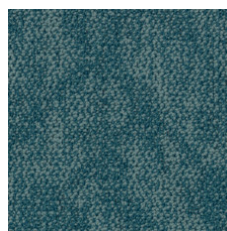
Available Colorways



Bubbly 90100



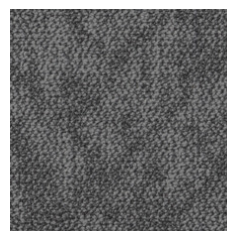
Satisfied 90111



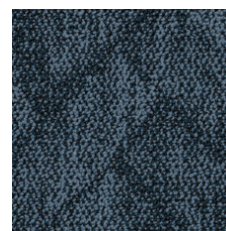
Refreshed 90323



Optimistic 90375



Strong 90481



Confident 90486



Mysterious 90500



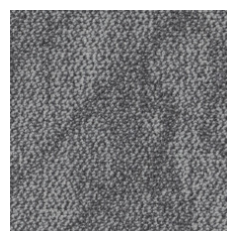
Spontaneous 90505



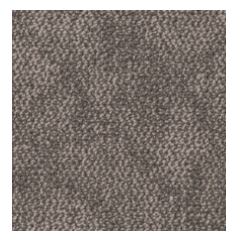
Grateful 90518



Empowered 90555



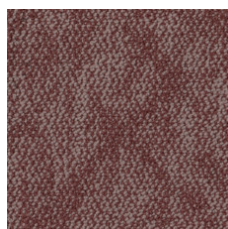
Focused 90580



Delightful 90780



Expressive 90865



Cheeky 90870

追加情報

* To learn more about the recyclability of our products and our re[TURN], please visit shawcontract.com/sustainability.

**Meets or exceeds all local and national regulations in country of manufacture.

***This carpet is manufactured to be ADA compliant, but to be fully ADA compliant, the end-user must ensure the carpet is adhered to the floor and installed as outlined in the ADA standards.

****Life-Cycle is modeled from US manufacturing.

[Installation Guidelines](#)

[Maintenance Guidelines](#)

Specifications are subject to nominal manufacturing variance. Material supply and/or manufacturing processes may necessitate changes without notice.

This product is an exclusive design and may not be duplicated in any manner. Use of this design in the creation of another product design is also strictly prohibited.

Visit shawcontract.com/testing for more information.



Declare.



PVC-Free

Corporate Headquarters +1 800 257 7429 | +1 706 532 7984 | Atlanta +1 404 853 7429 | Bengaluru +91 80 6773 0202 | Beijing +86 10 6568 588 | Chicago +1 312 467 1331 | Dubai +971 4 584 6956 | Hong Kong +852 2623 0371 | London +44 207 961 4120 | Los Angeles +1 800 233 1614 | Melbourne +61 3 9939 8543 | Mexico City +55 5010 7600 | Mumbai +91 22 6284 5050 | Nantong +86 400 800 7429 | New York +1 212 953 7429 | Paris +33 (0) 1 81 22 44 39 | San Francisco +1 415 955 1920 | Shanghai +86 21 3338 4000 | Singapore +65 6733 1811 | Sydney +61 800 556 302

© 2025 Shaw Industries Group, Inc., a Berkshire Hathaway Company
July 21, 2025

3 of 3