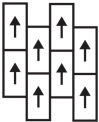


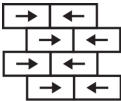
Upbeat Ecoworx® Tile

상품 유형	Carpet Tile	
수집	New Path	
스타일 번호	42N8C	
구성	다중 레벨 루프식	
염료 방법	100% 원착 염색	
기본 백업	합성	
보조 백업	Ecoworx® 타일	
보호 처리	SSP® Shaw 흠먼지 보호	
제품 크기	U.S.	metric
	18 in x 36 in	46 cm x 91 cm
	45 ft²	4.18 m²
	10 pcs	
	1/12 in	47.2 per 10 cm
	8.0 per in	32.5 per 10 cm
	0.115 in	2.92 mm
	5322 oz/yd³	0.197 g/cm³
	0.252 in	6.4 mm
	17 oz/yd²	576.4 g/m²

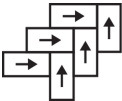
권장 설치 방법



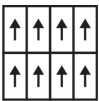
Ashlar



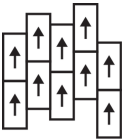
Brick



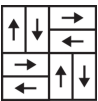
Herringbone



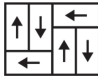
Monolithic



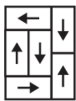
Stagger



Basketweave



Half Basketweave



Boxed In

데이터 + 테스트

알약 테스트	Pass
복사 패널 (Astm E648)	Class I
Nbs 연기	Less Than 450
정전기 성향	Less Than 3.5 kv
Cri 그린 라벨 플러스 (Glp)	GLP1263
Ada 준수	0.6 이상, ADA 보행 노면과 이용 가능한 경로의 권장 마찰계수 충족***

보증

중신 상용 제한

코디네이팅 제품

Carpet Tile: **Positive Ecoworx® Tile, Calm Ecoworx® Tile, Centered Ecoworx® Tile, Upbeat Tile, Positive Tile, Centered Tile, Calm Tile**

속성 + 인증

Health & Wellbeing

Material Ingredient Transparency

Cradle to Cradle Certified® | Silver Level (Version 4.0)
Health Product Declaration (HPD) | 1,000ppm 노출
Living Building Challenge (LBC) | 적색목록 화학물질 없음
Declare | LBC 규격
NSF 140 | 골드
CRI Green Label Plus (GLP) | GLP1263

Indoor Air Quality

Climate Impact

Environmental Product Declaration (EPD)

ISO14044, ISO14025 및 EN15804에 따라 타사 인증 획득

Embodied Carbon (Cradle to Gate)

6.97 kg CO₂/m²

Life-Cycle Carbon Emissions****

Carbon Neutral

Total Recycled Content

56% (Pre-Consumer 56% | Post-Consumer 0%)

Product Packaging

100% 재활용 가능

Global Product Assessment

Singapore Green Label | 인증
CE Marking (EN 14041) | 타사 인증 획득
Environmental Guarantee* | Re[turn] Reclamation Program* | Through Our Environmental Guarantee, Shaw Pledges to Transport And Recycle Any Ecoworx Carpet.
Country of Origin | Imported**

Well V2 Contribution Credit

X08 Hazardous Material Reduction Part 1: Limit Hazardous Materials Optimization – 1 pt

C2C Silver Level (Version 4.0)

X10 Volatile Compound Reduction Part 1 (A): Manage Volatile Organic Compounds (VOCs) Optimization – 1 pt

C2C Silver Level (Version 4.0)

X11 Long Term Emissions Control Part 2: Flooring Optimization – 1 pt

Green Label Plus Certification: GLP9968

X13 Enhanced Material Precaution Part 1: Select Optimized Materials Optimization – max 2 pts

C2C Silver Level (Version 4.0)

X14 Material Transparency Part 1: Promote Ingredient Disclosure Optimization – max 2 pts

C2C Silver Level (Version 4.0)

녹색의 공헌 기여 크레딧

MR 크레딧 : 제품 공개 및 최적화 구축
환경 제품 선언-옵션 1 : 환경 제품 선언 (EPD)

3rd Party Certified in Accordance with ISO14044, ISO14025 & EN15804

MR 크레딧 : 제품 공개 및 최적화 구축
재료 성분-옵션 1 : 재료 성분보고

C2C Silver Level (Version 4.0) or HPD (Version 2.1)

MR 크레딧 : 제품 공개 및 최적화 구축
재료 성분-옵션 2 : 재료 성분 최적화

C2C Silver Level (Version 4.0)

MR 크레딧 : 제품 공개 및 최적화 구축
원료 소싱-옵션 2 : 리더십 추출 사례

Environmental Guarantee: Re[turn] Reclamation Program* | Through Our Environmental Guarantee, Shaw Pledges to Transport And Recycle Any Ecoworx® Carpet.

EQ 크레딧 : 저 발광 재료
옵션 1 : 제품 범주 계산

Green Label Plus Certification: GLP9968

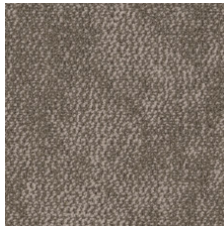
MR Credit: Interiors Life-Cycle Impact Reduction
Option 3: Design for Flexibility

Ecoworx® Tile with Lokdots Installation System

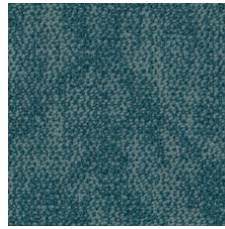
Available Colorways



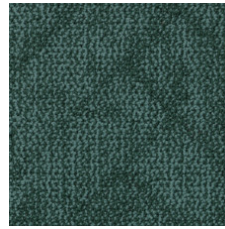
Bubbly 90100



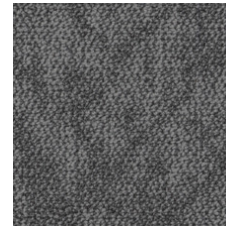
Satisfied 90111



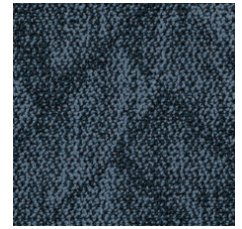
Refreshed 90323



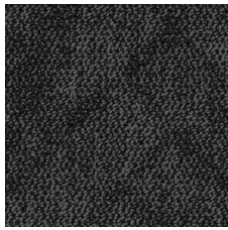
Optimistic 90375



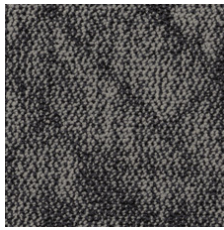
Strong 90481



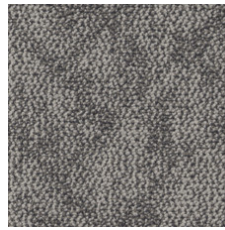
Confident 90486



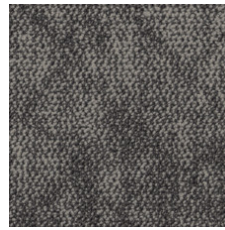
Mysterious 90500



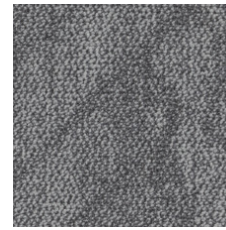
Spontaneous 90505



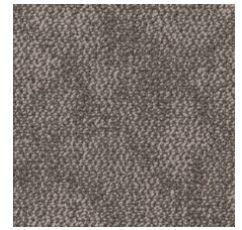
Grateful 90518



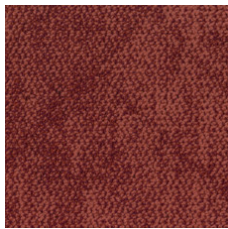
Empowered 90555



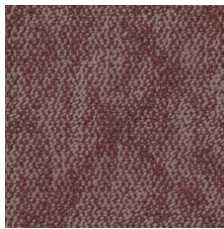
Focused 90580



Delightful 90780



Expressive 90865



Cheeky 90870

추가 정보

* To learn more about the recyclability of our products and our re[TURN], please visit shawcontract.com/sustainability.

**Meets or exceeds all local and national regulations in country of manufacture.

***This carpet is manufactured to be ADA compliant, but to be fully ADA compliant, the end-user must ensure the carpet is adhered to the floor and installed as outlined in the ADA standards.

****Life-Cycle is modeled from US manufacturing.

[Installation Guidelines](#)

[Maintenance Guidelines](#)

Specifications are subject to nominal manufacturing variance. Material supply and/or manufacturing processes may necessitate changes without notice.

This product is an exclusive design and may not be duplicated in any manner. Use of this design in the creation of another product design is also strictly prohibited.

Visit shawcontract.com/testing for more information.



PVC-Free

Corporate Headquarters +1 800 257 7429 | +1 706 532 7984 | Atlanta +1 404 853 7429 | Bengaluru +91 80 6773 0202 | Beijing +86 10 6568 588 | Chicago +1 312 467 1331 | Dubai +971 4 584 6956 | Hong Kong +852 2623 0371 | London +44 207 961 4120 | Los Angeles +1 800 233 1614 | Melbourne +61 3 9939 8543 | Mexico City +55 5010 7600 | Mumbai +91 22 6284 5050 | Nantong +86 400 800 7429 | New York +1 212 953 7429 | Paris +33 (0) 1 81 22 44 39 | San Francisco +1 415 955 1920 | Shanghai +86 21 3338 4000 | Singapore +65 6733 1811 | Sydney +61 800 556 302

© 2025 Shaw Industries Group, Inc., a Berkshire Hathaway Company
July 18, 2025

3 of 3