

Calm Ecoworx® Tile

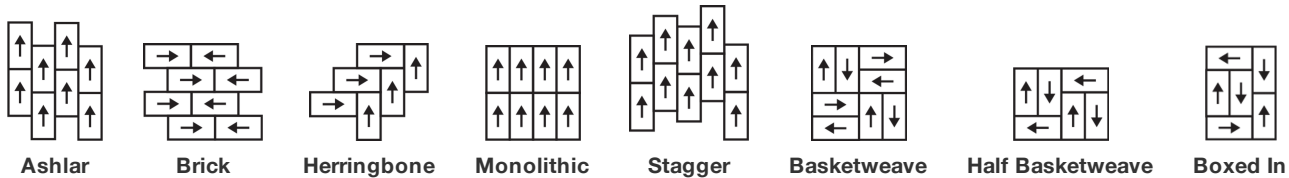
상품 유형
수집
스타일 번호
구성
염료 방법
기본 백업
보조 백업
보호 처리

Carpet Tile
New Path
42N8B
다중 레벨 루프식
100% 원착 염색
합성
Ecoworx® 타일
SSP® Shaw 흠먼지 보호

제품 크기
상자 당 면적
상자 당 조각
계량기
스티치
완성 된 말뚝 두께
평균 밀도
총 두께
슬을다는 무게

| U.S. | metric |
|-------------------------------|-------------------------------|
| 18 in x 36 in | 46 cm x 91 cm |
| 45 ft² | 4.18 m² |
| 10 pcs | |
| 1/12 in | 47.2 per 10 cm |
| 8.0 per in | 32.5 per 10 cm |
| 0.116 in | 2.95 mm |
| 5276 oz/yd³ | 0.195 g/cm³ |
| 0.250 in | 6.35 mm |
| 17 oz/yd² | 576.4 g/m² |

권장 설치 방법



데이터 + 테스트

알약 테스트
복사 패널 (Astm E648)
Nbs 연기
정전기 성향
Cri 그린 라벨 플러스 (Glp)
Ada 준수

Pass
Class I
Less Than 450
Less Than 3.5 kv
GLP1263
0.6 이상, ADA 보행 노면과 이용 가능한 경로의 권장 마찰계수 충족***

보증

중신 상용 제한

코디네이팅 제품

Carpet Tile: **Positive Ecoworx® Tile, Upbeat Ecoworx® Tile, Centered Ecoworx® Tile, Upbeat Tile, Positive Tile, Centered Tile, Calm Tile**

속성 + 인증

Health & Wellbeing

Material Ingredient Transparency

Cradle to Cradle Certified® | Silver Level (Version 4.0)
Health Product Declaration (HPD) | 1,000ppm 노출
Living Building Challenge (LBC) | 적색목록 화학물질 없음
Declare | LBC 규격
NSF 140 | 골드
CRI Green Label Plus (GLP) | GLP1263

Indoor Air Quality

Climate Impact

Environmental Product Declaration (EPD)

Embodied Carbon (Cradle to Gate)

Life-Cycle Carbon Emissions****

Total Recycled Content

Product Packaging

ISO14044, ISO14025 및 EN15804에 따라 타사 인증 획득
6.97 kg CO₂/m²
Carbon Neutral
56% (Pre-Consumer 56% | Post-Consumer 0%)
100% 재활용 가능

Global Product Assessment

Singapore Green Label | 인증
CE Marking (EN 14041) | 타사 인증 획득
Environmental Guarantee* | Re[turn] Reclamation Program* | Through Our Environmental Guarantee, Shaw Pledges to Transport And Recycle Any Ecoworx Carpet.
Country of Origin | Imported**

Well V2 Contribution Credit

X08 Hazardous Material Reduction Part 1: Limit Hazardous Materials Optimization – 1 pt
X10 Volatile Compound Reduction Part 1 (A): Manage Volatile Organic Compounds (VOCs) Optimization – 1 pt
X11 Long Term Emissions Control Part 2: Flooring Optimization – 1 pt
X13 Enhanced Material Precaution Part 1: Select Optimized Materials Optimization – max 2 pts
X14 Material Transparency Part 1: Promote Ingredient Disclosure Optimization – max 2 pts

C2C Silver Level (Version 4.0)
C2C Silver Level (Version 4.0)
Green Label Plus Certification: GLP9968
C2C Silver Level (Version 4.0)
C2C Silver Level (Version 4.0)

녹색의 공헌 기여 크레딧

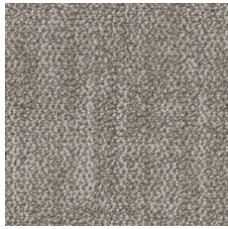
MR 크레딧 : 제품 공개 및 최적화 구축
환경 제품 선언-옵션 1 : 환경 제품 선언 (EPD)
MR 크레딧 : 제품 공개 및 최적화 구축
재료 성분-옵션 1 : 재료 성분보고
MR 크레딧 : 제품 공개 및 최적화 구축
재료 성분-옵션 2 : 재료 성분 최적화
MR 크레딧 : 제품 공개 및 최적화 구축
원료 소싱-옵션 2 : 리더십 추출 사례

3rd Party Certified in Accordance with ISO14044, ISO14025 & EN15804
C2C Silver Level (Version 4.0) or HPD (Version 2.1)
C2C Silver Level (Version 4.0)
Environmental Guarantee: Re[turn] Reclamation Program* | Through Our Environmental Guarantee, Shaw Pledges to Transport And Recycle Any Ecoworx® Carpet.
Green Label Plus Certification: GLP9968
Ecoworx® Tile with Lokdots Installation System

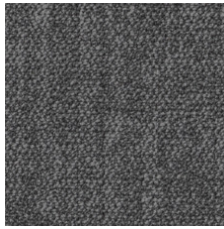
EQ 크레딧 : 저 발광 재료
옵션 1 : 제품 범주 계산

MR Credit: Interiors Life-Cycle Impact Reduction
Option 3: Design for Flexibility

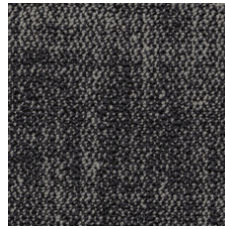
Available Colorways



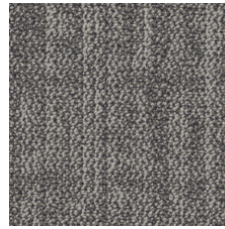
Bubbly 90100



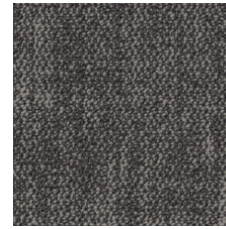
Strong 90481



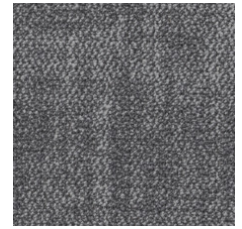
Spontaneous 90505



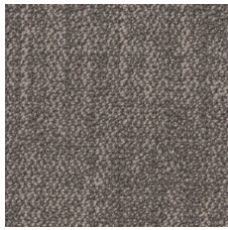
Grateful 90518



Empowered 90555



Focused 90580



Delightful 90780

추가 정보

* To learn more about the recyclability of our products and our re[TURN], please visit shawcontract.com/sustainability.

**Meets or exceeds all local and national regulations in country of manufacture.

***This carpet is manufactured to be ADA compliant, but to be fully ADA compliant, the end-user must ensure the carpet is adhered to the floor and installed as outlined in the ADA standards.

****Life-Cycle is modeled from US manufacturing.

[Installation Guidelines](#)

[Maintenance Guidelines](#)

Specifications are subject to nominal manufacturing variance. Material supply and/or manufacturing processes may necessitate changes without notice.

This product is an exclusive design and may not be duplicated in any manner. Use of this design in the creation of another product design is also strictly prohibited.

Visit shawcontract.com/testing for more information.



PVC-Free

Corporate Headquarters +1 800 257 7429 | +1 706 532 7984 | Atlanta +1 404 853 7429 | Bengaluru +91 80 6773 0202 | Beijing +86 10 6568 588 | Chicago +1 312 467 1331 | Dubai +971 4 584 6956 | Hong Kong +852 2623 0371 | London +44 207 961 4120 | Los Angeles +1 800 233 1614 | Melbourne +61 3 9939 8543 | Mexico City +55 5010 7600 | Mumbai +91 22 6284 5050 | Nantong +86 400 800 7429 | New York +1 212 953 7429 | Paris +33 (0) 1 81 22 44 39 | San Francisco +1 415 955 1920 | Shanghai +86 21 3338 4000 | Singapore +65 6733 1811 | Sydney +61 800 556 302

© 2025 Shaw Industries Group, Inc., a Berkshire Hathaway Company
July 18, 2025

3 of 3