

Observe

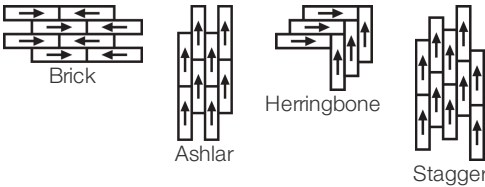
Collection	Art + Science	
Style Number	4566V	
Construction	Heavy Commercial Pvc-Free Ecoworx™ Resilient	
Finish	ExoGuard+®	
	U.s.	Metric
Nominal Dimensions	8 in w x 51 in l	21 cm w x 129 cm l
Actual Dimensions	8.27 in w x 50.79 in l	21.01 cm w x 129.01 cm l
Overall Thickness	0.098 in	2.5 mm
Edge Profile	Micro-Bevel	
Installation Type	Dry Back	
Installation	Direct Glue	
Recommended Adhesive	4200 Resilient 1 Gallon or 4200 Resilient 4 Gallon	

Packaging

Pieces Per Carton	16 pcs	
Area Per Carton	46.65 sq ft	4.33 sq m
Weight Per Carton	36.43 lbs	16.52 kg



Recommended Installation Method



Coordinating Products

PVC-Free: Pivot, Experiment

Performance + Testing

Residual Indentation (ASTM F1914)	Passes
Resistance to Heat (ASTM F1514)	Passes
Resistance to Light (ASTM F1515)	Passes
Resistance to Chemicals (ASTM F925)	Passes
Smoke Density (ASTM E662, Flaming Mode)	Passes
Radiant Panel (ASTM E648)	Passes, Class I
coefficient of friction (ASTM D2407, slip resistance)	>0.6, meets the recommended static coefficient of friction for ADA walking surfaces and accessible routes

Test Reports may be included or listed by the manufacturing/inventory style number as opposed to the noted selling style number.

Warranties

- [1 Year Commercial Limited Warranty](#)
- [25 Year Commercial System Warranty](#)

Material Health & Environmental Certifications

Health & Wellbeing	
Material Ingredient Transparency	Greenhealth Approved Yes Health Product Declaration (HPD) 1000 ppm Disclosure Declare LBC Compliant
Climate Impact	
Environmental Product Declaration (EPD)	in Accordance with ISO 14025:2006 And EN 15804:2012+a2:2019/Ac:2021
Embodied Carbon (Cradle to Gate)	5.2 Kg Co ₂ /M ²
Life-Cycle Carbon Emissions	Carbon Neutral
Total Recycled Content	25% (Pre-Consumer 0% Post-Consumer 25%)
Global Product Assessment	Environmental Guarantee* Through Our Environmental Guarantee, Shaw Pledges to Transport And Recycle Any Ecoworx Resilient Within The United States And Canada At No Cost to The Customer. Country of Origin Imported

WELL V2 Contribution Credit

X01 Fundamental Material Precautions Part 1: (C): Restrict Asbestos Precondition	Absence of Asbestos
X08 Hazardous Material Reduction Part 1: Limit Hazardous Materials Optimization – 1 pt	Absence of Heavy Metals
X10 Volatile Compound Reduction Part 1 (A): Manage Volatile Organic Compounds (VOCs) Optimization – 1 pt	Absence of Halogenated Flame Retardants
Part 2: Manage Semi-Volatile Organic Compounds (SVOCs) Optimization – 1 pt	Ortho-Phthalates
X11 Long Term Emissions Control Part 2: Flooring Optimization – 1 pt	Green Guard Gold Certified
X14 Material Transparency Part 1: Promote Ingredient Disclosure Optimization – max 2 pts	Health Product Declaration (HPD) 1000 Ppm Disclosure

Green Leed Contribution Credit

MR Credit: Building Product Disclosure and Optimization Material Ingredients - Option 1: Material Ingredient Reporting	Health Product Declaration (HPD) 1000 Ppm Disclosure
---	---

Additional Information

* To learn more about the recyclability of our products and our Environmental Guarantee, please visit [shawcontract.com/sustainability](#).

**Meets or exceeds all local and national regulations in country of manufacture.

[Installation](#)

[Maintenance](#)

Please visit [www.shawcontract.com](#) for the most current warranty information.

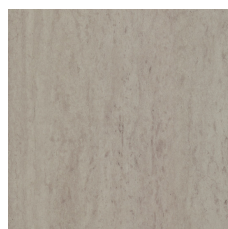
Specifications are subject to nominal manufacturing variance. Material supply and/or manufacturing processes may necessitate changes without notice.

This product is an exclusive design and may not be duplicated in any manner. Use of this design in the creation of another product design is also strictly prohibited.

*****Allowable spend is domestic (US) spend in categories in which we have diverse suppliers from which to choose. Compared to non-allowable spend which includes categories in which we do not have domestic, small or diverse suppliers available to meet our needs.

Visit [shawcontract.com/testing](#) for more information.

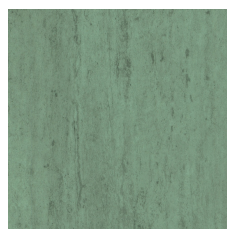
Available Colorways



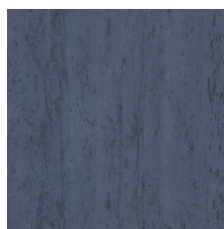
Regenerate 00103
LRV 33.7 | L* 64.74
V2 - Slight Variation



Enliven 00201
LRV 49.9 | L* 75.98
V2 - Slight Variation



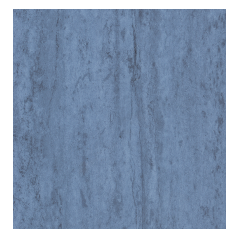
Leaf 00375
LRV 27.7 | L* 59.64
V3 - Moderate Variation



Beyond 00450
LRV 12.9 | L* 42.68
V3 - Moderate Variation



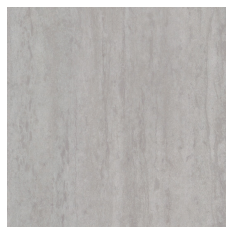
Engage 00475
LRV 21.7 | L* 53.68
V3 - Moderate Variation



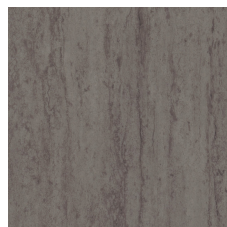
Stand Out 00486
LRV 20.2 | L* 52.06
V3 - Moderate Variation



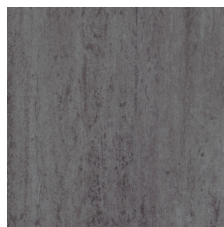
Edition 00516
LRV 24.5 | L* 56.61
V2 - Slight Variation



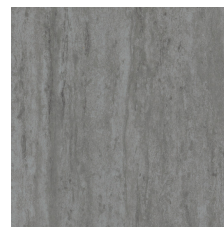
Divert 00520
LRV 39.9 | L* 69.42
V2 - Slight Variation



Outlook 00535
LRV 18.8 | L* 50.48
V2 - Slight Variation



Muse 00585
LRV 16.4 | L* 47.49
V2 - Slight Variation



Sustain 00595
LRV 24.8 | L* 56.89
V3 - Moderate Variation



Spark 00855
LRV 23.7 | L* 55.82
V2 - Slight Variation

Color and Visual Variation Index

Shade and texture variation is inherent in all resilient products and can vary significantly from piece to piece. Samples should be used to assess color.

V1



Uniform Appearance

V2



Slight Variation

V3



Moderate Variation

V4



Substantial Variation



Declare.

