

Observe

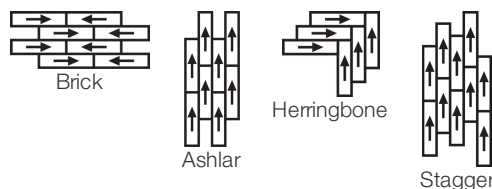
Coleção	Art + Science	
Número Do Produto	4566V	
Construção	Heavy Commercial Pvc-Free Ecoworx™ Resilient	
classe		
Acabamento	ExoGuard+®	
	U.s.	Metric
Dimensões Nominais	8 in w x 51 in l	21 cm w x 129 cm l
Dimensões Reais	8.27 in w x 50.79 in l	21.01 cm w x 129.01 cm l
Espessura Total Do Produto	0.098 in	2.5 mm
Perfil De Borda	Micro-Chanfrado	
Installation Type	Dry Back	
Instalação	Direct Glue	
Adesivo Recomendado	4200 Resilient 1 Gallon or 4200 Resilient 4 Gallon	

Empacotamento

Peças Por Caixa	16 pcs	
Área Por Caixa	46.65 sq ft	4.33 sq m
Peso Por Caixa	36.43 lbs	16.52 kg



Método De Instalação Recomendado



Produtos Coordenados

PVC-Free: Pivot, Experiment

desempenho + teste

recuo residual (ASTM F1914)	Passes
resistência ao calor (ASTM F1514)	Passes
resistência à luz (ASTM F1515)	Passes
resistência a produtos químicos (ASTM F925)	Passes
densidade de fumaça (ASTM E662, modo flamejante)	Passes
painel radiante (ASTM E648)	Passes, Class I
coeficiente de atrito (ASTM D2407, resistência ao deslizamento)	>0.6, meets the recommended static coefficient of friction for ADA walking surfaces and accessible routes

Test Reports may be included or listed by the manufacturing/inventory style number as opposed to the noted selling style number.

Garantias

- [1 Year Commercial Limited Warranty](#)
- [25 Year Commercial System Warranty](#)

Atributos + Certificações

Health & Wellbeing

- Material Ingredient Transparency
- Greenhealth Approved | Yes
Health Product Declaration (HPD) | 1000 ppm Disclosure
Declare | Compativel LBC

Climate Impact

- Environmental Product Declaration (EPD)
- in Accordance with ISO 14025:2006 And EN 15804:2012+a2:2019/Ac:2021
- Embodied Carbon (Cradle to Gate)
- 5.2 Kg Co₂/M²
- Life-Cycle Carbon Emissions
- Carbon Neutral
- Total Recycled Content
- 25% (Pre-Consumer 0% | Post-Consumer 25%)

Global Product Assessment

Environmental Guarantee* | Through Our Environmental Guarantee, Shaw Pledges to Transport And Recycle Any Ecoworx Resilient Within The United States And Canada At No Cost to The Customer.

Country of Origin | Imported

WELL V2 Contribution Credit

- X01 Fundamental Material Precautions Part 1: (C): Restrict Asbestos Precondition
- Absence of Asbestos**
- X08 Hazardous Material Reduction Part 1: Limit Hazardous Materials Optimization – 1 pt
- Absence of Heavy Metals**
- X10 Volatile Compound Reduction Part 1 (A): Manage Volatile Organic Compounds (VOCs) Optimization – 1 pt
- Absence of Halogenated Flame Retardants**
- Part 2: Manage Semi-Volatile Organic Compounds (SVOCs) Optimization – 1 pt
- Ortho-Phthalates**
- X11 Long Term Emissions Control Part 2: Flooring Optimization – 1 pt
- Green Guard Gold Certified**
- X14 Material Transparency Part 1: Promote Ingredient Disclosure Optimization – max 2 pts
- Health Product Declaration (HPD) | 1000 Ppm Disclosure**

Crédito De Contribuição

- MR Credit: Divulgação e otimização de produtos de construção
- Health Product Declaration (HPD) | 1000 Ppm Disclosure**
- Ingredientes materiais - Opção 1: Relatório de ingredientes materiais

Informação Adicional

* To learn more about the recyclability of our products and our Environmental Guarantee, please visit [shawcontract.com/sustainability](#).

**Meets or exceeds all local and national regulations in country of manufacture.

- [Installation](#)
- [Maintenance](#)

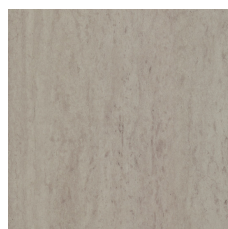
Please visit [www.shawcontract.com](#) for the most current warranty information. Specifications are subject to nominal manufacturing variance. Material supply and/or manufacturing processes may necessitate changes without notice.

This product is an exclusive design and may not be duplicated in any manner. Use of this design in the creation of another product design is also strictly prohibited.

*****Allowable spend is domestic (US) spend in categories in which we have diverse suppliers from which to choose. Compared to non-allowable spend which includes categories in which we do not have domestic, small or diverse suppliers available to meet our needs.

Visit [shawcontract.com/testing](#) for more information.

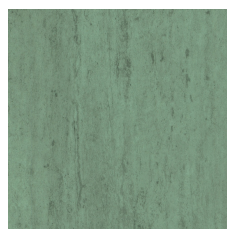
Available Colorways



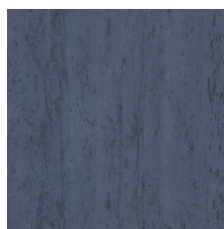
Regenerate 00103
LRV 33.7 | L* 64.74
V2 - Slight Variation



Enliven 00201
LRV 49.9 | L* 75.98
V2 - Slight Variation



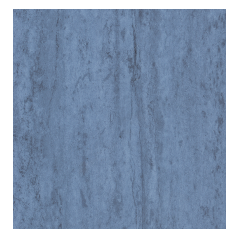
Leaf 00375
LRV 27.7 | L* 59.64
V3 - Moderate Variation



Beyond 00450
LRV 12.9 | L* 42.68
V3 - Moderate Variation



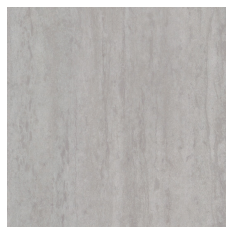
Engage 00475
LRV 21.7 | L* 53.68
V3 - Moderate Variation



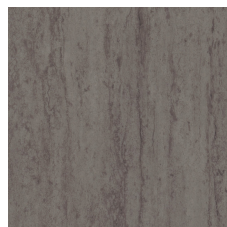
Stand Out 00486
LRV 20.2 | L* 52.06
V3 - Moderate Variation



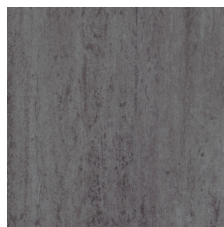
Edition 00516
LRV 24.5 | L* 56.61
V2 - Slight Variation



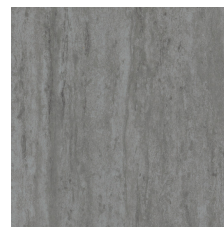
Divert 00520
LRV 39.9 | L* 69.42
V2 - Slight Variation



Outlook 00535
LRV 18.8 | L* 50.48
V2 - Slight Variation



Muse 00585
LRV 16.4 | L* 47.49
V2 - Slight Variation



Sustain 00595
LRV 24.8 | L* 56.89
V3 - Moderate Variation



Spark 00855
LRV 23.7 | L* 55.82
V2 - Slight Variation

Color and Visual Variation Index

Shade and texture variation is inherent in all resilient products and can vary significantly from piece to piece. Samples should be used to assess color.

V1



Uniform Appearance

V2



Slight Variation

V3



Moderate Variation

V4



Substantial Variation



Declare.



Corporate Headquarters +1 800 257 7429 | +1 706 532 7984 | Atlanta +1 404 853 7429 | Bengaluru +91 80 6773 0202 | Beijing +86 10 6568 588 | Chicago +1 312 467 1331 | Dubai +971 4 584 6956 | Hong Kong +852 2623 0371 | London +44 207 961 4120 | Los Angeles +1 800 233 1614 | Melbourne +61 3 9939 8543 | Mexico City +55 5010 7600 | Mumbai +91 22 6284 5050 | Nantong +86 400 800 7429 | New York +1 212 953 7429 | Paris +33 (0) 1 81 22 44 39 | San Francisco +1 415 955 1920 | Shanghai +86 21 3338 4000 | Singapore +65 6733 1811 | Sydney +61 800 556 302

© 2025 Shaw Industries Group, Inc., a Berkshire Hathaway Company
July 1, 2025

3 of 3