

Tet1a

|                             |   |                     |
|-----------------------------|---|---------------------|
| Product Type                | Broadloom   |                     |
| Collection                  | Timeless Essentials   |                     |
| Style Number                | TET1A   |                     |
| Construction                | Multi-Level Pattern/Cut Loop                                      |                     |
| Fibre                       | Ecosolution Q® Nylon  |                     |
| Dye Method                  | 100% Solution Dyed  |                     |
| Primary Backing             | Synthetic   |                     |
| Secondary Backing           | Classicbac®   |                     |
| Recommended Adhesive        | 1000 Broadloom 4 Gallon or 3800 Indoor Outdoor Broadloom 4 Gallon |                     |
|                             | u.s.  | metric              |
| Product Size                | 12 ft   | 3.66 m              |
| Gauge                       | 1/10 in   | 39.4 per 10 cm      |
| Stitches                    | 12.5 per in   | 49.5 per 10 cm      |
| Finished Pile Thickness     | 0.199 in  | 5.05 mm             |
| Average Density             | 5789 oz/yd³   | 0.214 g/cm³         |
| Total Thickness             | 0.344 in  | 8.74 mm             |
| Tufted Weight               | 32 oz/yd²   | 1085 g/m²           |
| Installation Pattern Repeat | 18"X18"   | 45.72 cm X 45.72 cm |



Recommended Installation Method

Direct Glue, Double Glue, Stretch-In

Data + Testing

|                            |  |
|----------------------------|--|
| Pill Test                  | Pass   |
| Radiant Panel (Astm E648)  | Class I  |
| Nbs Smoke                  | Less Than 450  |
| Electrostatic Propensity   | Less Than 3.5 kv   |
| Cri Green Label Plus (Glp) | GLP8472  |
| Ada Compliance             | >0.6, Meets the recommended static coefficient of friction for ADA walking surfaces and accessible routes*** |

Coordinating Products

Broadloom: **Tet1b, Tet1c, Tet1d, Tet1e, Tet1f, Tet2a, Tet2b, Tet2c, Tet2d, Tet2e, Tet2f, Tet3a, Tet3b, Tet3c, Tet3d, Tet3e, Tet3f, Tet4a, Tet4b, Tet4c, Tet4d, Tet4e, Tet4f**

Attributes + Certifications

|   |  |
|---|--|
| Health & Wellbeing                      |  |
| Material Ingredient Transparency        | Cradle to Cradle Certified®   Silver Level (Version 3.1)<br>Health Product Declaration (HPD)   1,000 ppm Disclosure<br>NSF 140   Gold                              |
| Indoor Air Quality                      | CRI Green Label Plus (GLP)   GLP8472   |
| Climate Impact                          |  |
| Environmental Product Declaration (EPD) | 3rd Party Certified in Accordance with ISO14044, ISO14025 & EN15804  |
| Total Recycled Content                  | <1% (Pre-Consumer <1%   Post-Consumer 0%)  |
| Product Packaging                       | 100% Recyclable  |
| Global Product Assessment               | CE Marking (EN 14041)   3rd Party Certified<br>Environmental Guarantee*   Re[turn] Reclamation Program*   Pickup & Delivery Available<br>Country of Origin**   USA |

Well V2 Contribution Credit

|  |                                       |
|--|---------------------------------------|
| X08 Hazardous Material Reduction Part 1: Limit Hazardous Materials Optimization – 1 pt                   | C2C Silver Level (Version 3.1)        |
| X10 Volatile Compound Reduction Part 1 (A): Manage Volatile Organic Compounds (VOCs) Optimization – 1 pt | C2C Silver Level (Version 3.1)        |
| X11 Long Term Emissions Control Part 2: Flooring Optimization – 1 pt                                     | Green Label Plus Certificationglp8472 |
| X13 Enhanced Material Precaution Part 1: Select Optimized Materials Optimization – max 2 pts             | C2C Silver Level (Version 3.1)        |
| X14 Material Transparency Part 1: Promote Ingredient Disclosure Optimization – max 2 pts                 | C2C Silver Level (Version 3.1)        |

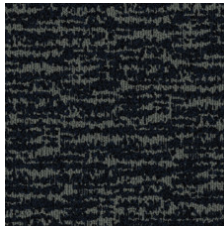
Green Leed Contribution Credit

|   |   |
|---|---|
| MR Credit: Building Product Disclosure and Optimization<br>Environmental Product Declarations - Option 1: Environmental Product Declaration (EPD) | 3rd Party Certified in Accordance with ISO14044, ISO14025 & EN15804 |
| MR Credit: Building Product Disclosure and Optimization<br>Material Ingredients - Option 1: Material Ingredient Reporting                         | C2C Silver Level (Version 3.1)                                      |
| MR Credit: Building Product Disclosure and Optimization<br>Material Ingredients - Option 2: Material Ingredient Optimization                      | C2C Silver Level (Version 3.1)                                      |
| EQ Credit: Low Emitting Materials<br>Option 1: Product Category Calculations  | Green Label Plus Certification: GLP8472                             |

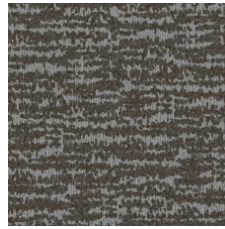
## Available Colorways



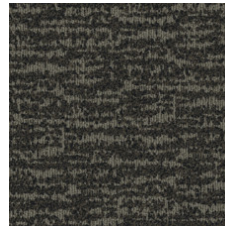
Camel 00170



Navy 00496



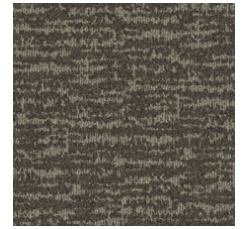
Silver 00530



Slate 00555



Chocolate 00585



Taupe 00760

## Additional Information

\* To learn more about the recyclability of our products and our Environmental Guarantee, please visit [shawcontract.com/sustainability](https://shawcontract.com/sustainability).

\*\*Meets or exceeds all local and national regulations in country of manufacture. (Manufactured in an ISO 9001 & ISO 14001 certified facility or equivalent)

\*\*\*This carpet is manufactured to be ADA compliant, but to be fully ADA compliant, the end-user must ensure the carpet is adhered to the floor and installed as outlined in the ADA standards.

Installation Guidelines

Maintenance Guidelines

Specifications are subject to nominal manufacturing variance. Material supply and/or manufacturing processes may necessitate changes without notice.

This product is an exclusive design and may not be duplicated in any manner. Use of this design in the creation of another product design is also strictly prohibited.

Visit [shawcontract.com/testing](https://shawcontract.com/testing) for more information.



**PVC-Free**

Corporate Headquarters +1 800 257 7429 | +1 706 532 7984 | Atlanta +1 404 853 7429 | Bengaluru +91 80 6773 0202 | Beijing +86 10 6568 588 | Chicago +1 312 467 1331 | Dubai +971 4 584 6956 | Hong Kong +852 2623 0371 | London +44 207 961 4120 | Los Angeles +1 800 233 1614 | Melbourne +61 3 9939 8543 | Mexico City +55 5010 7600 | Mumbai +91 22 6284 5050 | Nantong +86 400 800 7429 | New York +1 212 953 7429 | Paris +33 (0) 1 81 22 44 39 | San Francisco +1 415 955 1920 | Shanghai +86 21 3338 4000 | Singapore +65 6733 1811 | Sydney +61 800 556 302

© 2025 Shaw Industries Group, Inc., a Berkshire Hathaway Company  
April 11, 2025

3 of 3