

Respond Colour Comfortworx® Tile

Stijlnummer	C012W	
Collectie	Living Systems	
Producttype	Tapijttegel	
Construction	Standard	Data + Performance
Type Fabricage	ISO 2424	tufted 1/10" 39.4 per 10cm
Uitzicht	ISO 2424	Multilevel-Patroonlus
Verfmethode	EN 994	100% In Oplossing Geverfd
Productformaat	EN 994	25 cm x 100 cm 20 tiles (5 m²) per box
Primaire Backing	ISO 2424	Pet Nonwoven
Secundaire Backing	ISO 2424	Comfortworx® Tegel Matrix Padlaag Bevat 90% Gerecycleerd Materiaal
Vezel	ISO 2424	Ecosolution Q® Polyamide 6
Totale Dikte	ISO 1765	12.1 mm
Afgewerkte Pooldikte	ISO 1766	3.1 mm
Totale Massa	ISO 8543	4821 g/m²
Getuft Gewicht	ISO 2424	814 g/m²
Effectieve Poolmassa	ISO 8543	322 g/m²
Pooldichtheid	ISO 8543	0.102 g/cm³

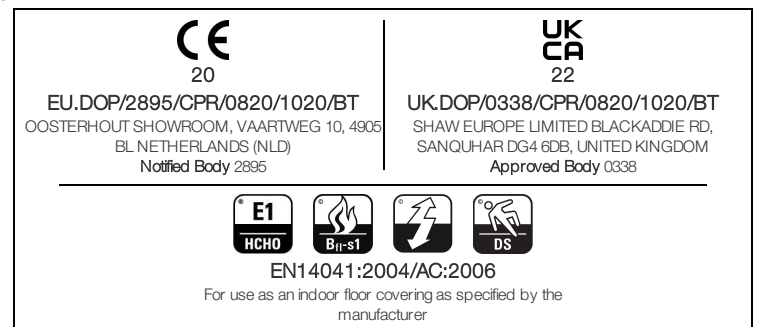
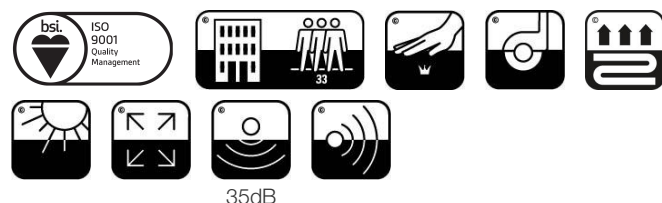


Gegevens

Steken	ISO 1763	124,000/m² 31.5 per 10cm
Elektrostatische Weerstand	ISO 6356	≤ 2.0 kv (Stroll Test)
Gebruik Classificatie	EN 1307	33 Commercial Heavy
Luxe klasse	EN 1307	LC1
Dimensionale Stabiliteit	EN 986	≤ 0.2%
Contactgeluidsisolatie	ISO 10140	35db
Geluidsabsorptieclassificatie	ISO 354/11654	0.30 Aw Class D
Warmteweerstand m² K/w	ISO 8302	0.156 M² K/W Tog 1.56
Weerstand Tegen Droog Uitglijden	ISO 13893	Pass / No Pulled Loops
Kleurvastheid Voor Licht	ISO 105-B02	>6
Ontvlambaarheid	EN 13501-1	Bfl-S1 (Adhered Testing)
Stoel Met Wieltjes	EN 985	≥2.4 Continuous Use

15 Jaar Commercieel Beperkt subject to installation in full accordance with the manufacturer's instructions and a regular effective cleaning and maintenance programme. Second location warranties are available with the use of non-adhesive IOBAC Magtabs and Tabit accessories.

Aanbevolen Installatiemethode



Coördinerende Producten

Carpet Tile: **Observe Colour Comfortworx® Tile, Endless Comfortworx® Tile, Transform Colour Comfortworx® Tile, Source Comfortworx® Tile, Boundless Comfortworx® Tile, Respond Comfortworx® Tile, Endless Taskworx® Tile, Respond Taskworx® Tile, Observe Taskworx® Tile, Transform Taskworx® Tile, Respond Colour Taskworx® Tile, Observe Colour Taskworx® Tile, Transform Colour Taskworx® Tile, Boundless Taskworx® Tile, Source Taskworx® Tile**

Kenmerken + Certificeringen

Declaration of Performance

EU.DOP/2895/CPR/0820/1020/BT

Environmental Product Declaration (EPD)

3de Partij Gecertificeerd in Overeenstemming Met ISO 14044, ISO 14025 & EN15804

milieugarantie

Take Back Policy Offered For All Comfortworx Products

ISO 9001

Gecertificeerd

land van herkomst

Verenigd Koninkrijk

BREEAM Contribution Credit

**Certificate of Approval
Schools/Offices/Health/Industrial Shed
Retail**

Well V2 Contribution Credit

X11 Langetermijn-emissiebeheersing - deel 2: Optimalisering van vloeren - 1 pt **M1> Emissions Class For Building Material**

Groen Leed Bijdragekrediet

"MR-krediet: openbaarmaking en optimalisering van bouwproducten
Milieuproductverklaringen - Optie 1: Milieuproductverklaring (EPD)"

3rd Party Certified in Accordance with ISO 14044, ISO 14025 & EN15804

"MR-krediet: Openbaarmaking en optimalisering van bouwproducten
Materiaalingrediënten - Optie 1: Rapportage materiaalingrediënten"

HPD (Version 2.1)

Air Quality

Indoor Air Comfort Gold

Certified

M1

Certified

Memberships

WGBC Framework

WGBC Framework

UKGBC

UKGBC

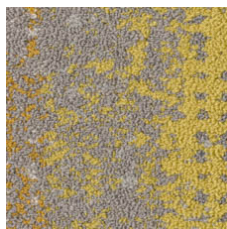
Emirates Green Building Council

Emirates Green Building Council

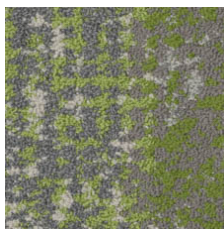
Chemsec

Chemsec

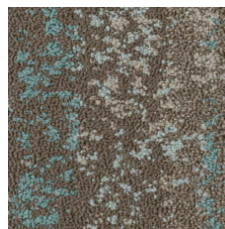
Lichtreflectiewaarde



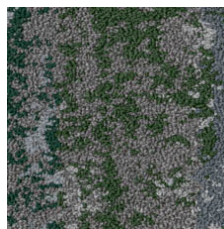
Optimistic Ochre 05225
LRV 17.8 | L* 49.26



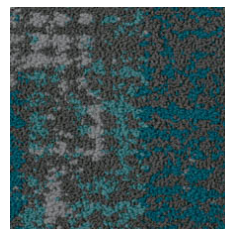
Radiant Nature 05326
LRV 14.5 | L* 44.92



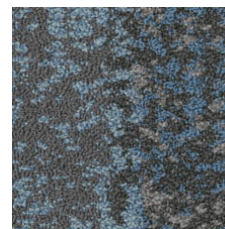
Mountain Lake 05327
LRV 15.3 | L* 46.04



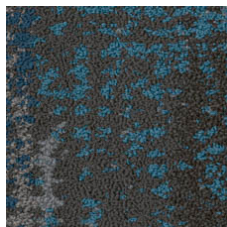
Untamed Forests 05334
LRV 8 | L* 33.95



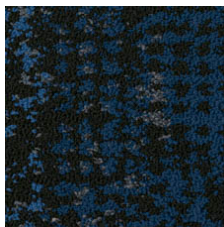
Calm Oceans 05405
LRV 5.6 | L* 28.37



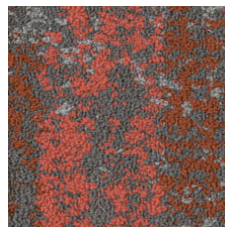
Wild Flora 05411
LRV 8.2 | L* 34.34



Lava Springs 05440
LRV 7 | L* 32.72



Deepest Skies 05486
LRV 5.3 | L* 27.58



Fragile Coral 05865
LRV 8.4 | L* 34.79

Aanvullende Informatie

**Manufactured in ISO 9001 certified facility. Meets or exceeds all local and national regulations in country of manufacture.

[Installation Guidelines](#)

[15 jaar commercieel beperkt](#)

Specifications are subject to nominal manufacturing variance. Material supply and/or manufacturing processes may necessitate changes without notice.

This product is an exclusive design and may not be duplicated in any manner. Use of this design in the creation of another product design is also strictly prohibited.

Visit shawcontract.com/testing for more information.



Corporate Headquarters +1 800 257 7429 | +1 706 532 7984 | Atlanta +1 404 853 7429 | Bengaluru +91 80 6773 0202 | Beijing +86 10 6568 588 | Chicago +1 312 467 1331 | Dubai +971 4 584 6956 | Hong Kong +852 2623 0371 | London +44 207 961 4120 | Los Angeles +1 800 233 1614 | Melbourne +61 3 9939 8543 | Mexico City +55 5010 7600 | Mumbai +91 22 6284 5050 | Nantong +86 400 800 7429 | New York +1 212 953 7429 | Paris +33 (0) 1 81 22 44 39 | San Francisco +1 415 955 1920 | Shanghai +86 21 3338 4000 | Singapore +65 6733 1811 | Sydney +61 800 556 302

© 2025 Shaw Industries Group, Inc., a Berkshire Hathaway Company
April 18, 2025

3 of 3