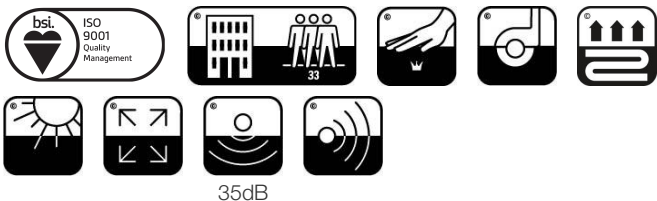




Observe Colour Comfortworx® Tile

Numéro Du Style	C010W	
Collection	Living Systems	
Type De Produit	Dalles De Moquette	
Construction	Standard	Data + Performance
Type De Fabrication	ISO 2424	tufted 1/10" 39.4 per 10cm
Construction	ISO 2424	Tufté Structuré Bouclé à Motif
Méthode De Coloration	EN 994	100% Solution Teinte
Dimensions Du Produit	EN 994	25 cm x 100 cm 20 tiles (5 m²) per box
Sous-couche Primaire	ISO 2424	Pet Non-Woven
Sous-couche Secondaire	ISO 2424	Comfortworx® Tile La Couche Matrix Pad Contient 90 % De Contenu Recyclé
Fibre	ISO 2424	Ecosolution Q® Polyamide 6
Epaisseur Du Velours	ISO 1765	12.1 mm
Épaisseur Du Velours Fini	ISO 1766	3.1 mm
Poids Total	ISO 8543	4821 g/m²
Poids Tufté	ISO 2424	814 g/m²
Poids Du Velours Utile	ISO 8543	322 g/m²
Densité Du Velours	ISO 8543	0.102 g/cm³
Données		
Points	ISO 1763	124,000/m² 31.5 per 10cm
Propension Electrostatique	ISO 6356	≤ 2.0 kv (Stroll Test)
Classification d'Utilisation	EN 1307	33 Commercial Heavy
Classification Luxe	EN 1307	LC1
Stabilité Dimensionnelle	EN 986	≤ 0.2%
Isolation Acoustique	ISO 10140	35db
Classification d'Absorption Sonore	ISO 354/11654	0.30 Aw Class D
Résistance Thermique m² K/w	ISO 8302	0.156 M² K/W Tog 1.56
Dry Slip Resistance	ISO 13893	Pass / No Pulled Loops
Résistance De La Couleur À La Lumière	ISO 105-B02	>6
Inflammabilité	EN 13501-1	Bfl-S1 (Adhered Testing)
Chaise À Roulette	EN 985	≥2.4 Continuous USE
Limitée Commerciale De 15 Ans subject to installation in full accordance with the manufacturer's instructions and a regular effective cleaning and maintenance programme. Second location warranties are available with the use of non-adhesive IOBAC Magtabs and Tabit accessories.		

Méthodes d'Installation Conseillées



20

EU.DOP/2895/CPR/0820/1020/BT

OOSTERHOUT SHOWROOM, VAARTWEG 10, 4905 BL NETHERLANDS (NLD)

Notified Body 2895

22

UK.DOP/0338/CPR/0820/1020/BT

SHAW EUROPE LIMITED BLACKADDIE RD, SANQUHAR DG4 6DB, UNITED KINGDOM

Approved Body 0338

EN14041:2004/AC:2006

For use as an indoor floor covering as specified by the manufacturer

Coordination Des Produits

Carpet Tile: **Endless Comfortworx® Tile, Respond Colour Comfortworx® Tile, Transform Colour Comfortworx® Tile, Source Comfortworx® Tile, Boundless Comfortworx® Tile, Observe Comfortworx® Tile, Respond Comfortworx® Tile, Transform Comfortworx® Tile, Endless Taskworx® Tile, Respond Taskworx® Tile, Observe Taskworx® Tile, Transform Taskworx® Tile, Respond Colour Taskworx® Tile, Observe Colour Taskworx® Tile, Transform Colour Taskworx® Tile, Boundless Taskworx® Tile, Source Taskworx® Tile**

Attributs + Certifications

Declaration of Performance

EU.DOP/2895/CPR/0820/1020/BT

Déclaration environnementale de produit (EPD)

Certifié Par Un Organisme Tiers Conformément Aux Normes ISO14044, ISO 14025 & EN15804

garantie environnementale

Take Back Policy Offered For All Comfortworx Products

ISO 9001

Certifié

pays d'origine

United Kingdom

BREEAM Contribution Credit

**Certificate of Approval
Schools/Offices/Health/Industrial Shed
Retail**

Well V2 Contribution Credit

X11 Contrôle des émissions à long terme Partie 2 : Optimisation des revêtements de sol – 1 pt

M1> Emissions Class For Building Material

Contribution À La Certification Leed

MR Credit: Building Product Disclosure and Optimisation
Environmental Product Declarations - Option 1: Environmental Product Declaration (EPD)**3rd Party Certified in Accordance with ISO14044, ISO14025 & EN15804**MR Credit: Building Product Disclosure and Optimisation
Material Ingredients - Option 1: Material Ingredient Reporting**HPD (Version 2.1)**"Crédit EQ : matériaux faibles émissions
Option 1 : calculs par catégorie de produit"**Certified**

Air Quality

Indoor Air Comfort Gold

Certified

M1

Certified

Memberships

WGBC Framework

WGBC Framework

UKGBC

UKGBC

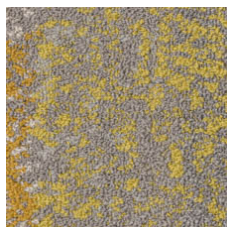
Emirates Green Building Council

Emirates Green Building Council

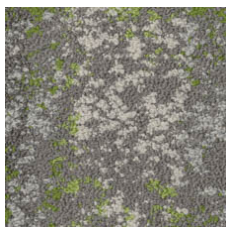
Chemsec

Chemsec

Indice De Réflexion Lumineuse



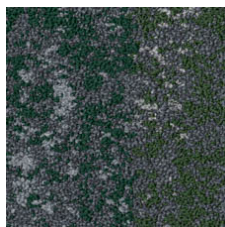
Optimistic Ochr 05225
LRV 18.4 | L* 49.95



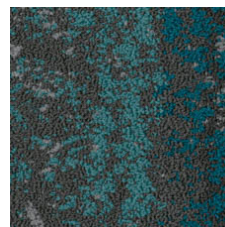
Radiant Nature 05326
LRV 18.4 | L* 50.04



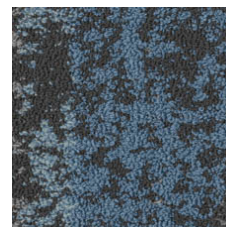
Mountain Lake 05327
LRV 16 | L* 46.96



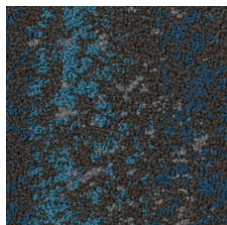
Untamed Forests 05334
LRV 7.8 | L* 33.57



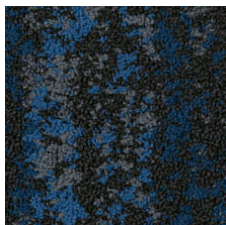
Calm Oceans 05405
LRV 7.7 | L* 33.27



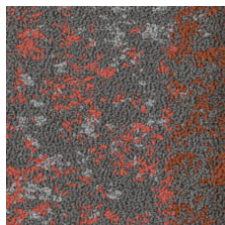
Wild Flora 05411
LRV 10.6 | L* 38.97



Lava Springs 05440
LRV 5.3 | L* 27.53



Deepest Skies 05486
LRV 4.4 | L* 25.09



Fragile Coral 05865
LRV 8.2 | L* 34.35

Informations Supplémentaires

**Manufactured in ISO 9001 certified facility. Meets or exceeds all local and national regulations in country of manufacture.

[Installation Guidelines](#)

[Limitée commerciale de 15 ans](#)

Specifications are subject to nominal manufacturing variance. Material supply and/or manufacturing processes may necessitate changes without notice.

This product is an exclusive design and may not be duplicated in any manner. Use of this design in the creation of another product design is also strictly prohibited.

Visit shawcontract.com/testing for more information.



Corporate Headquarters +1 800 257 7429 | +1 706 532 7984 | Atlanta +1 404 853 7429 | Bengaluru +91 80 6773 0202 | Beijing +86 10 6568 588 | Chicago +1 312 467 1331 | Dubai +971 4 584 6956 | Hong Kong +852 2623 0371 | London +44 207 961 4120 | Los Angeles +1 800 233 1614 | Melbourne +61 3 9939 8543 | Mexico City +55 5010 7600 | Mumbai +91 22 6284 5050 | Nantong +86 400 800 7429 | New York +1 212 953 7429 | Paris +33 (0) 1 81 22 44 39 | San Francisco +1 415 955 1920 | Shanghai +86 21 3338 4000 | Singapore +65 6733 1811 | Sydney +61 800 556 302

© 2025 Shaw Industries Group, Inc., a Berkshire Hathaway Company
April 11, 2025

3 of 3