

A woman in a plaid shirt and jeans stands in a modern, geometric interior space. The room features a large, dark, angular structure that frames a central area. A small table with a red object on it is visible. The floor is covered in a dark, textured material. The walls are white, and a single light fixture hangs from the ceiling.

Méthodes d'Installation Conseillées



Stagger



<p>CE 20</p> <p>EU.DOP/2895/CPR/0820/1020/BT</p> <p>OOSTERHOUT SHOWROOM, VAARTWEG 10, 4905 BL NETHERLANDS (NLD)</p> <p>Notified Body 2895</p>	<p>UK CA 22</p> <p>UK.DOP/0338/CPR/0820/1020/BT</p> <p>SHAW EUROPE LIMITED BLACKADDIE RD, SANQUHAR DG4 6DB, UNITED KINGDOM</p> <p>Approved Body 0338</p>
--	---

Coordination Des Produits

Carpet Tile: **Observe Colour Comfortworx® Tile, Endless Comfortworx® Tile, Respond Colour Comfortworx® Tile, Transform Colour Comfortworx® Tile, Boundless Comfortworx® Tile, Observe Comfortworx® Tile, Respond Comfortworx® Tile, Transform Comfortworx® Tile, Endless Taskworx® Tile, Respond Taskworx® Tile, Observe Taskworx® Tile, Transform Taskworx® Tile, Respond Colour Taskworx® Tile, Observe Colour Taskworx® Tile, Transform Colour Taskworx® Tile, Boundless Taskworx® Tile, Source Taskworx® Tile**

Attributs + Certifications

Declaration of Performance	EU.DOP/2895/CPR/0820/1020/BT
Déclaration environnementale de produit (EPD)	Certifié Par Un Organisme Tiers Conformément Aux Normes ISO14044, ISO 14025 & EN15804
garantie environnementale	Take Back Policy Offered For All Comfortworx Products
ISO 9001	Certifié
pays d'origine	United Kingdom
BREEAM Contribution Credit	Certificate of Approval Schools/Offices/Health/Industrial Shed Retail

Well V2 Contribution Credit

X11 Long Term Emissions Control Part 2: Flooring Optimization	M1> Emissions Class For Building Material
--	---

Contribution À La Certification Leed

MR Credit: Building Product Disclosure and Optimisation Environmental Product Declarations - Option 1: Environmental Product Declaration (EPD)	3rd Party Certified in Accordance with ISO14044, ISO14025 & EN15804
MR Credit: Building Product Disclosure and Optimisation Material Ingredients - Option 1: Material Ingredient Reporting	HPD (Version 2.1)
"Crédit EQ : matériaux faibles émissions Option 1 : calculs par catégorie de produit"	Certified

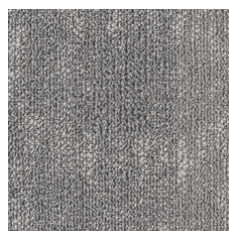
Air Quality

Indoor Air Comfort Gold	Certified
M1	Certified

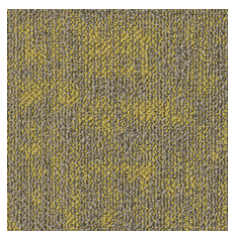
Memberships

WGBC Framework	WGBC Framework
UKGBC	UKGBC
Emirates Green Building Council	Emirates Green Building Council
Chemsec	Chemsec

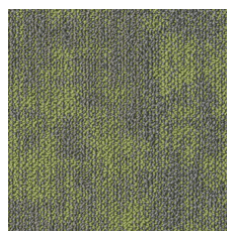
Indice De Réflexion Lumineuse



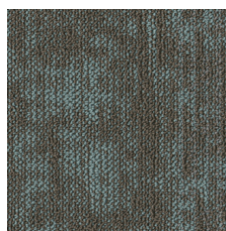
Optimistic 05105
LRV 22.1 | L* 54.1



Ochre 05225
LRV 20.9 | L* 52.86



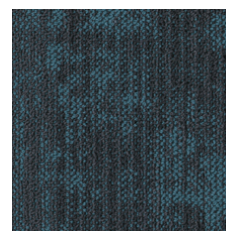
Nature 05326
LRV 15.8 | L* 46.7



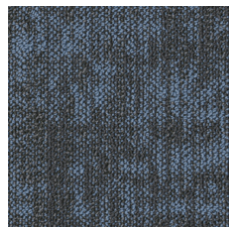
Lake 05327
LRV 12.2 | L* 41.55



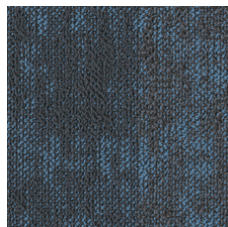
Forests 05334
LRV 6 | L* 29.37



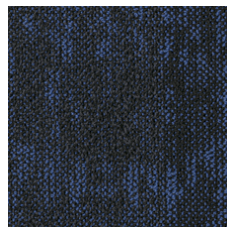
Oceans 05405
LRV 5.9 | L* 29.04



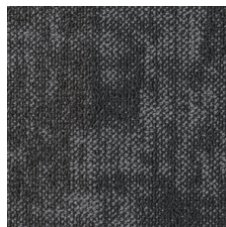
Flora 05411
LRV 8.2 | L* 34.47



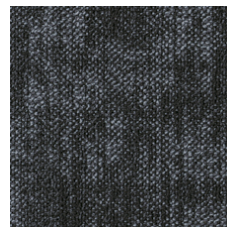
Springs 05440
LRV 6.3 | L* 30.06



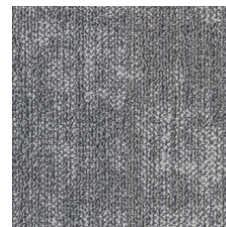
Skies 05486
LRV 4 | L* 23.62



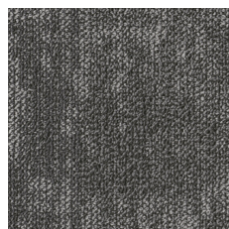
Lava 05500
LRV 6.5 | L* 30.75



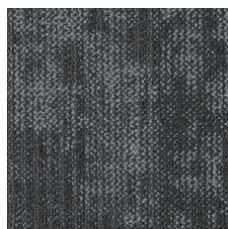
Deepest 05505
LRV 3.6 | L* 22.39



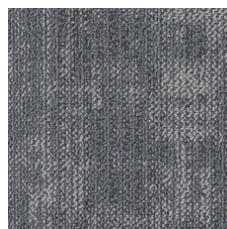
Radiant 05515
LRV 18.1 | L* 49.57



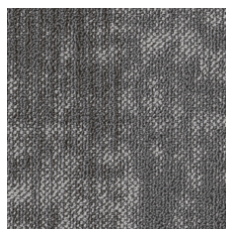
Wild 05557
LRV 9.4 | L* 36.75



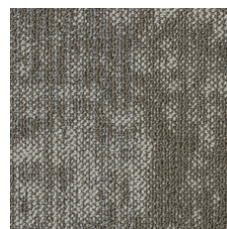
Calm 05580
LRV 7.1 | L* 32.09



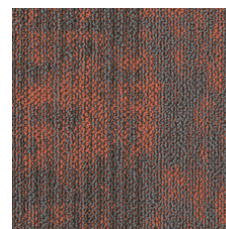
Untamed 05595
LRV 12.5 | L* 41.99



Fragile 05760
LRV 12.4 | L* 41.8



Mountain 05761
LRV 14.6 | L* 45.04



Coral 05865
LRV 9.8 | L* 37.45

Informations Supplémentaires

**Manufactured in ISO 9001 certified facility. Meets or exceeds all local and national regulations in country of manufacture.

[Installation Guidelines](#)

[15 Year Commercial Limited Warranty warranty](#)

Specifications are subject to nominal manufacturing variance. Material supply and/or manufacturing processes may necessitate changes without notice.

This product is an exclusive design and may not be duplicated in any manner. Use of this design in the creation of another product design is also strictly prohibited.

Visit shawcontract.com/testing for more information.



Corporate Headquarters +1 800 257 7429 | +1 706 532 7984 | Atlanta +1 404 853 7429 | Bengaluru +91 80 6773 0202 | Beijing +86 10 6568 588 | Chicago +1 312 467 1331 | Dubai +971 4 584 6956 | Hong Kong +852 2623 0371 | Latin America (Miami) +1 305 827 5912 | London +44 207 961 4120 | Los Angeles +1 800 233 1614 | Melbourne +61 3 9939 8543 | Mexico City +55 5010 7600 | Mumbai +91 22 6284 5050 | Nantong +86 400 800 7429 | New York +1 212 953 7429 | Paris +33 (0) 1 81 22 44 39 | San Francisco +1 415 955 1920 | Santiago +562 2431 5000 x 550 | São Paulo +55 11 3071 1702 | Shanghai +86 21 3338 4000 | Singapore +65 6733 1811 | Sydney +61 800 556 302

© 2024 Shaw Industries Group, Inc., a Berkshire Hathaway Company
November 21, 2024

3 of 3