



Graph Comfortworx® Tile

Style Number	C000W	
Collection	Rapid Select	
Product Type	Carpet Tile	
Construction	Standard	Data + Performance
Type of Manufacture	ISO 2424	tufted 1/12" 47.2 per 10cm
Aspect	ISO 2424	Multi-Level Pattern Loop
Dye Method	EN 994	100% Solution Dyed
Dimensions	EN 994	50 cm x 50 cm 16 tiles (4 m²) per box
Primary Backing	ISO 2424	Pet Non-Woven
Secondary Backing	ISO 2424	Comfortworx® Tile Matrix Pad Layer Contains 90% Recycled Content
Pile Fibre Composition	ISO 2424	Ecosolution Q® Polyamide 6
Total Thickness	ISO 1765	10.8 mm
Effective Pile Thickness	ISO 1766	2.7 mm
Total Mass	ISO 8543	4195 g/m²
Nominal Total Pile Mass	ISO 2424	616 g/m²
Effective Pile Mass	ISO 8543	313 g/m²
Pile Density	ISO 8543	0.113 g/cm³



Performance

Number of Tufts	ISO 1763	217,000/m² 45.9 per 10cm
Electrostatic Propensity	ISO 6356	≤ 2.0 kv (Stroll Test)
Use Classification	EN 1307	33 Commercial Heavy
Luxury Class	EN 1307	LC1
Dimensional Stability	EN 986	≤ 0.2%
Impact Sound Insulation	ISO 10140	37db
Sound Absorption Classification	ISO 354/11654	0.30 Aw Class D
Thermal Resistance m² K/W	ISO 8302	0.168 M² K/W Tog 1.68
Dry Slip Resistance	ISO 13893	Pass / No Pulled Loops
Colour Fastness To Light	ISO 105-B02	>6
Flammability	EN 13501-1	Bfl-S1 (Adhered Testing)
Castor Chair	EN 985	≥2.4 Continuous Use

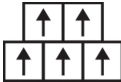
Recommended Installation Method



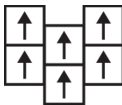
Monolithic



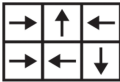
Quarter Turn



Brick



Ashlar



Random



37dB

Corporate Headquarters +1 800 257 7429 | +1 706 532 7984 | Atlanta +1 404 853 7429 | Bengaluru +91 80 6773 0202 | Beijing +86 10 6568 588 | Chicago +1 312 467 1331 | Dubai +971 4 584 6956 | Hong Kong +852 2623 0371 | Latin America (Miami) +1 305 827 5912 | London +44 207 961 4120 | Los Angeles +1 800 233 1614 | Melbourne +61 3 9939 8543 | Mexico City +55 5010 7600 | Mumbai +91 22 6284 5050 | Nantong +86 400 800 7429 | New York +1 212 953 7429 | Paris +33 (0) 1 81 22 44 39 | San Francisco +1 415 955 1920 | Santiago +562 2431 5000 x 550 | São Paulo +55 11 3071 1702 | Shanghai +86 21 3338 4000 | Singapore +65 6733 1811 | Sydney +61 800 556 302

Coordinating Products

Carpet Tile: **Roam Comfortworx® Tile, Nook Comfortworx® Tile, Graph Taskworx® Tile, Roam Taskworx® Tile, Nook Taskworx® Tile**

Material Health & Environmental Certifications

Declaration of Performance	EU.DOP/2895/CPR/0820/1020/BT
Environmental Product Declaration (EPD)	3rd Party Certified in Accordance with ISO14044, ISO14025 & EN15804
Environmental Guarantee*	Take Back Policy Offered For All Comfortworx Products
ISO 9001	Certified
Country of Origin**	United Kingdom
BREEAM Contribution Credit	Certificate of Approval Schools/Offices/Health/Industrial Shed Retail

WELL V2 Contribution Credit

X11 Long Term Emissions Control Part 2: Flooring Optimization	M1> Emissions Class For Building Material
--	---

Leed v4 Contribution Credits

MR Credit: Building Product Disclosure and Optimization Environmental Product Declarations - Option 1: Environmental Product Declaration (EPD)	3rd Party Certified in Accordance with ISO14044, ISO14025 & EN15804
MR Credit: Building Product Disclosure and Optimization Material Ingredients - Option 1: Material Ingredient Reporting	HPD (Version 2.1)

Air Quality

Indoor Air Comfort Gold	Certified
M1	Certified

Memberships

WGBC Framework	WGBC Framework
UKGBC	UKGBC
Emirates Green Building Council	Emirates Green Building Council
Chemsec	Chemsec

Light Reflectance Value

					
Cotswold 26100 LRV 26 L* 58.08	Gravel 26105 LRV 26.2 L* 58.27	Sandstone 26155 LRV 23.7 L* 55.84	Grey Mist 26481 LRV 11 L* 39.62	Regent Blue 26485 LRV 7.1 L* 32	Flint 26505 LRV 2.9 L* 19.65
					
Cobblestone 26515 LRV 15.5 L* 46.31	Mountain 26518 LRV 16.7 L* 47.87	Looking Glass 26530 LRV 13 L* 42.69	Sussex Grey 26535 LRV 11.3 L* 40.02	Shadow 26557 LRV 5.5 L* 28.16	Steel 26592 LRV 13.9 L* 44.07
					
Stone Gate 26760 LRV 10.1 L* 38.09					

Additional Information

**Manufactured in ISO 9001 certified facility. Meets or exceeds all local and national regulations in country of manufacture.

[Installation Guidelines](#)

[15 Year Commercial Limited warranty](#)

Specifications are subject to nominal manufacturing variance. Material supply and/or manufacturing processes may necessitate changes without notice.

This product is an exclusive design and may not be duplicated in any manner. Use of this design in the creation of another product design is also strictly prohibited.

Visit shawcontract.com/testing for more information.

