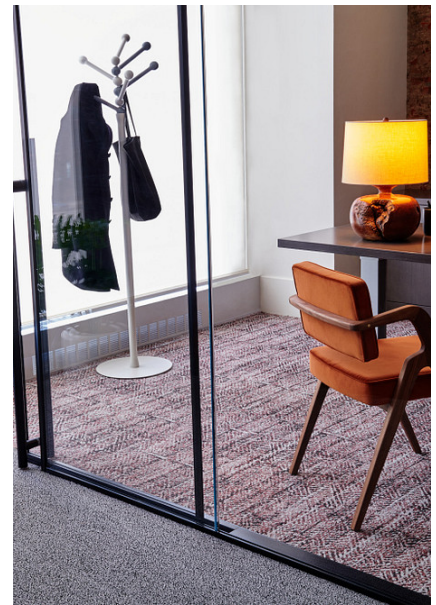


## Honest Comfortworx® Tile

Style Number	<b>C005W</b>	
Collection	<b>Haven</b>	
Product Type	<b>Carpet Tile</b>	
Construction	<b>Standard</b>	<b>Data + Performance</b>
Type of Manufacture	<b>ISO 2424</b>	<b>tufted 1/10"   39.4 per 10cm</b>
Aspect	<b>ISO 2424</b>	<b>Multi-Level Pattern Loop</b>
Dye Method	<b>EN 994</b>	<b>100% Solution Dyed</b>
Dimensions	<b>EN 994</b>	<b>25 cm x 100 cm   12 tiles (3 m²) per box</b>
Primary Backing	<b>ISO 2424</b>	<b>Pet Non-Woven</b>
Secondary Backing	<b>ISO 2424</b>	<b>Comfortworx® Tile   Matrix Pad Layer Contains 90% Recycled Content</b>
Pile Fibre Composition	<b>ISO 2424</b>	<b>Eco Solution Q® Polyamide 6</b>
Total Thickness	<b>ISO 1765</b>	<b>12.3 mm</b>
Effective Pile Thickness	<b>ISO 1766</b>	<b>3.5 mm</b>
Total Mass	<b>ISO 8543</b>	<b>4404 g/m²</b>
Nominal Total Pile Mass	<b>ISO 2424</b>	<b>949 g/m²</b>
Effective Pile Mass	<b>ISO 8543</b>	<b>394 g/m²</b>
Pile Density	<b>ISO 8543</b>	<b>0.113 g/cm³</b>
Total Recycled Content		<b>53% (pre-consumer 42%   post-consumer 11%)</b>

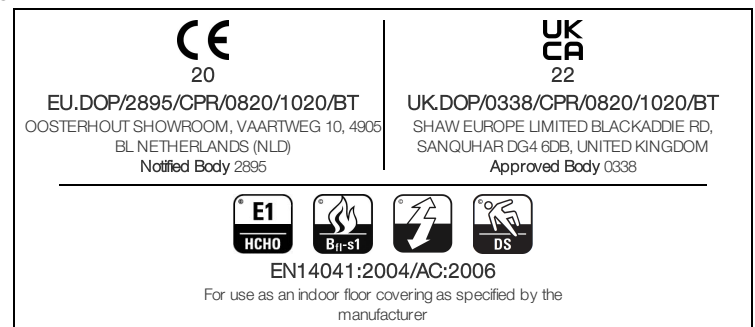
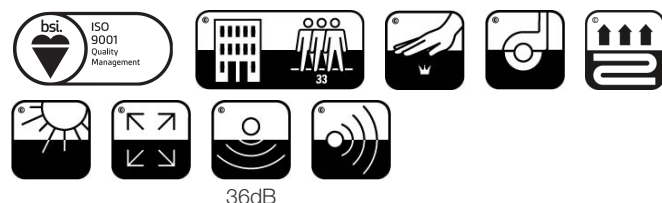


## Performance

Number of Tufts	<b>ISO 1763</b>	<b>129,000/m²   32.8 per 10cm</b>
Electrostatic Propensity	<b>ISO 6356</b>	<b>≤ 2.0 kv (Stroll Test)</b>
Use Classification	<b>EN 1307</b>	<b>33 Commercial Heavy</b>
Luxury Class	<b>EN 1307</b>	<b>LC1</b>
Dimensional Stability	<b>EN 986</b>	<b>≤ 0.2%</b>
Impact Sound Insulation	<b>ISO 10140</b>	<b>36db</b>
Sound Absorption Classification	<b>ISO 354/11654</b>	<b>0.35 Aw   Class D</b>
Thermal Resistance m² K/W	<b>ISO 8302</b>	<b>0.166 M² K/W Tog 0.46</b>
Dry Slip Resistance	<b>ISO 13893</b>	<b>Pass / No Pulled Loops</b>
Colour Fastness To Light	<b>ISO 105-B02</b>	<b>&gt;6</b>
Flammability	<b>EN 13501-1</b>	<b>Bfl-S1 (Adhered Testing)</b>
Castor Chair	<b>EN 985</b>	<b>≥2.4 Continuous Use</b>

**15 Year Commercial Limited Warranty** subject to installation in full accordance with the manufacturer's instructions and a regular effective cleaning and maintenance programme. Second location warranties are available with the use of non-adhesive IOBAC Magtabs and Tabit accessories.

## Recommended Installation Method



Coordinating Products

Carpet Tile: **Familiar Comfortworx® Tile, Identity Comfortworx® Tile, Honest Taskworx® Tile, Identity Taskworx® Tile, Familiar Taskworx® Tile, Familiar Ecoworx S® Tile, Honest Ecoworx S® Tile, Identity Ecoworx S® Tile**

Product Transparency

Shaw Contract is dedicated to providing clients with a building chemistry that's safe and dependable. Working together, we will help you meet your goals as they pertain to material health. ComfortWorx® products are Cradle to Cradle Certified® Bronze and assessed for impacts on human health and the environment. This product can be recycled. When it's time to replace, we can collect through our re-[TURN] scheme in EMEA.

Material Health & Environmental Certifications

Declaration of Performance	EU.DOP/2895/CPR/0820/1020/BT
Environmental Product Declaration (EPD)	3rd Party Certified in Accordance with ISO14044, ISO14025 & EN15804
Environmental Guarantee*	Take Back Policy Offered For All Comfortworx Products
ISO 9001	Certified
Country of Origin**	United Kingdom
BREEAM Contribution Credit	Certificate of Approval Schools/Offices/Health/Industrial Shed Retail

WELL V2 Contribution Credit

X11 Long Term Emissions Control Part 2: Flooring Optimization	M1> Emissions Class For Building Material
--	---

Leed v4 Contribution Credits

MR Credit: Building Product Disclosure and Optimization Environmental Product Declarations - Option 1: Environmental Product Declaration (EPD)	3rd Party Certified in Accordance with ISO14044, ISO14025 & EN15804
MR Credit: Building Product Disclosure and Optimization Material Ingredients - Option 1: Material Ingredient Reporting	HPD ( Version 2.1 )
EQ Credit: Low Emitting Materials Option 1: Product Category Calculations	Certified

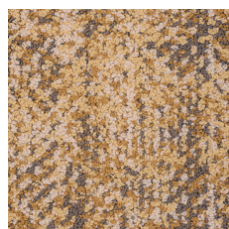
Air Quality

Indoor Air Comfort Gold	Certified
M1	Certified

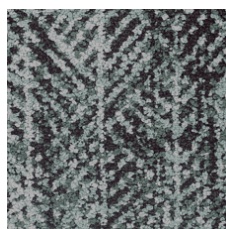
Memberships

WGBC Framework	WGBC Framework
UKGBC	UKGBC
Emirates Green Building Council	Emirates Green Building Council
Chemsec	Chemsec

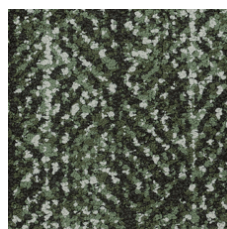
## Light Reflectance Value



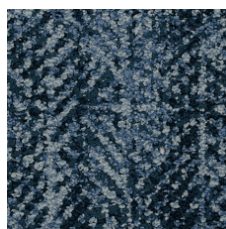
Golden 35210  
LRV 29.6 | L\* 61.32



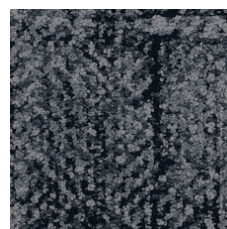
Mint 35327  
LRV 21.1 | L\* 53.07



Ivy 35375  
LRV 14.8 | L\* 45.31



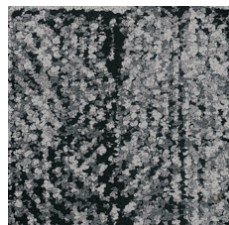
Overdye 35496  
LRV 9 | L\* 36.05



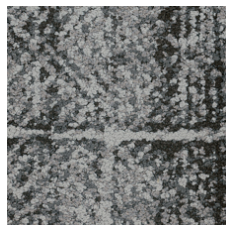
Raven 35505  
LRV 7.6 | L\* 33.11



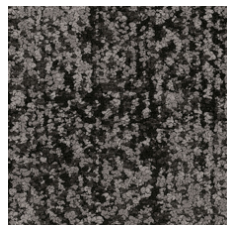
Greige 35516  
LRV 33.3 | L\* 64.43



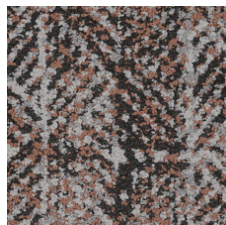
Fog 35518  
LRV 16.8 | L\* 48.02



Rainstorm 35535  
LRV 15.2 | L\* 45.89



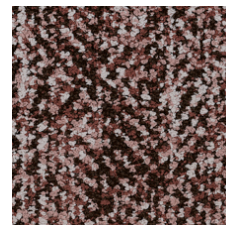
Espresso 35585  
LRV 9.6 | L\* 37.2



Apricot 35675  
LRV 17.2 | L\* 48.48



Truffle 35760  
LRV 14 | L\* 44.27



Rosewood 35870  
LRV 17.1 | L\* 48.39

## Additional Information

\*\*Manufactured in ISO 9001 certified facility. Meets or exceeds all local and national regulations in country of manufacture.

[Installation Guidelines](#)

[15 Year Commercial Limited warranty](#)

Specifications are subject to nominal manufacturing variance. Material supply and/or manufacturing processes may necessitate changes without notice.

This product is an exclusive design and may not be duplicated in any manner. Use of this design in the creation of another product design is also strictly prohibited.

Visit [shawcontract.com/testing](https://shawcontract.com/testing) for more information.



Corporate Headquarters +1 800 257 7429 | +1 706 532 7984 | Atlanta +1 404 853 7429 | Bengaluru +91 80 6773 0202 | Beijing +86 10 6568 588 | Chicago +1 312 467 1331 | Dubai +971 4 584 6956 | Hong Kong +852 2623 0371 | London +44 207 961 4120 | Los Angeles +1 800 233 1614 | Melbourne +61 3 9939 8543 | Mexico City +55 5010 7600 | Mumbai +91 22 6284 5050 | Nantong +86 400 800 7429 | New York +1 212 953 7429 | Paris +33 (0) 1 81 22 44 39 | San Francisco +1 415 955 1920 | Shanghai +86 21 3338 4000 | Singapore +65 6733 1811 | Sydney +61 800 556 302

© 2025 Shaw Industries Group, Inc., a Berkshire Hathaway Company  
July 18, 2025

3 of 3