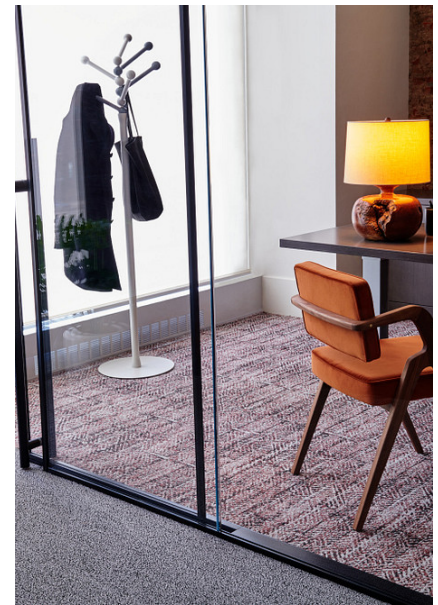


## Honest Comfortworx® Tile

Numéro Du Style	<b>C005W</b>	
Collection	<b>Haven</b>	
Type De Produit	<b>Dalles De Moquette</b>	
Construction	Standard	Data + Performance
Type De Fabrication	<b>ISO 2424</b>	<b>tufted 1/10"   39.4 per 10cm</b>
Construction	<b>ISO 2424</b>	<b>Tufté Structuré Bouclé à Motif</b>
Méthode De Coloration	<b>EN 994</b>	<b>100% Solution Teinte</b>
Dimensions Du Produit	<b>EN 994</b>	<b>25 cm x 100 cm   12 tiles (3 m²) per box</b>
Sous-couche Primaire	<b>ISO 2424</b>	<b>Pet Non-Woven</b>
Sous-couche Secondaire	<b>ISO 2424</b>	<b>Comfortworx® Tile   La Couche Matrix Pad Contient 90 % De Contenu Recyclé</b>
Fibre	<b>ISO 2424</b>	<b>Ecosolution Q® Polyamide 6</b>
Epaisseur Du Velours	<b>ISO 1765</b>	<b>12.3 mm</b>
Épaisseur Du Velours Fini	<b>ISO 1766</b>	<b>3.5 mm</b>
Poids Total	<b>ISO 8543</b>	<b>4404 g/m²</b>
Poids Tufté	<b>ISO 2424</b>	<b>949 g/m²</b>
Poids Du Velours Utile	<b>ISO 8543</b>	<b>394 g/m²</b>
Densité Du Velours	<b>ISO 8543</b>	<b>0.113 g/cm³</b>
Contenu Recyclé Total	<b>53% (pre-consumer 42%   post-consumer 11%)</b>	

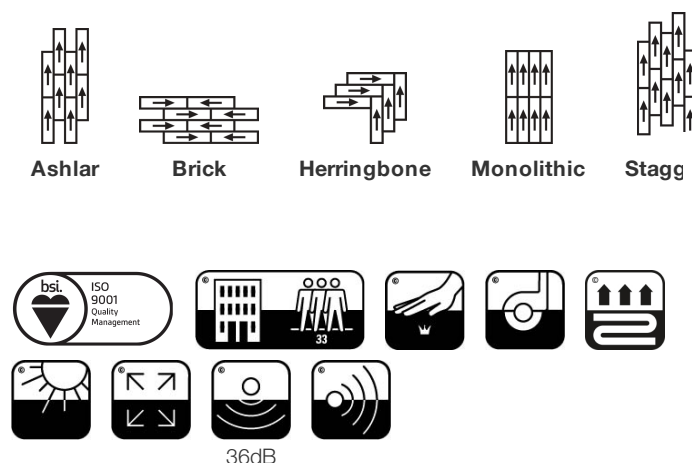


### Données

Points	<b>ISO 1763</b>	<b>129,000/m²   32.8 per 10cm</b>
Propension Electrostatique	<b>ISO 6356</b>	<b>≤ 2.0 kv (Stroll Test)</b>
Classification d'Utilisation	<b>EN 1307</b>	<b>33 Commercial Heavy</b>
Classification Luxe	<b>EN 1307</b>	<b>LC1</b>
Stabilité Dimensionnelle	<b>EN 986</b>	<b>≤ 0.2%</b>
Isolation Acoustique	<b>ISO 10140</b>	<b>36db</b>
Classification d'Absorption Sonore	<b>ISO 354/11654</b>	<b>0.35 Aw   Class D</b>
Résistance Thermique m² K/w	<b>ISO 8302</b>	<b>0.166 M² K/W Tog 0.46</b>
Dry Slip Resistance	<b>ISO 13893</b>	<b>Pass / No Pulled Loops</b>
Résistance De La Couleur À La Lumière	<b>ISO 105-B02</b>	<b>&gt;6</b>
Inflammabilité	<b>EN 13501-1</b>	<b>Bfl-S1 (Adhered Testing)</b>
Chaise À Roulette	<b>EN 985</b>	<b>≥2.4 Continuous Use</b>

**Limitée Commerciale De 15 Ans** subject to installation in full accordance with the manufacturer's instructions and a regular effective cleaning and maintenance programme. Second location warranties are available with the use of non-adhesive IOBAC Magtabs and Tabit accessories.

### Méthodes d'Installation Conseillées



20

EU.DOP/2895/CPR/0820/1020/BT

OOSTERHOUT SHOWROOM, VAARTWEG 10, 4905 BL NETHERLANDS (NLD)

Notified Body 2895

22

UK.DOP/0338/CPR/0820/1020/BT

SHAW EUROPE LIMITED BLACKADDIE RD, SANQUHAR DG4 6DB, UNITED KINGDOM

Approved Body 0338

E1

HCHO

Bfl-s1

EN14041:2004/AC:2006

For use as an indoor floor covering as specified by the manufacturer

## Coordination Des Produits

Carpet Tile: **Familiar Comfortworx® Tile, Identity Comfortworx® Tile, Honest Taskworx® Tile, Identity Taskworx® Tile**

## Attributs + Certifications

Declaration of Performance

**EU.DOP/2895/CPR/0820/1020/BT**

Déclaration environnementale de produit (EPD)

**Certifié Par Un Organisme Tiers Conformément Aux Normes  
ISO 14044, ISO 14025 & EN15804**

garantie environnementale

**Take Back Policy Offered For All Comfortworx Products**

ISO 9001

**Certifié**

pays d'origine

**United Kingdom**

BREEAM Contribution Credit

**Certificate of Approval  
Schools/Offices/Health/Industrial Shed  
Retail**

## Well V2 Contribution Credit

X11 Contrôle des émissions à long terme Partie 2 : Optimisation des revêtements de sol – 1 pt

**M1> Emissions Class For Building Material**

## Contribution À La Certification Leed

MR Credit: Building Product Disclosure and Optimisation  
Environmental Product Declarations - Option 1: Environmental Product  
Declaration (EPD)

**3rd Party Certified in Accordance with ISO14044, ISO14025 & EN15804**

MR Credit: Building Product Disclosure and Optimisation  
Material Ingredients - Option 1: Material Ingredient Reporting

**HPD ( Version 2.1 )**

"Crédit EQ : matériaux faibles émissions  
Option 1 : calculs par catégorie de produit"

**Certified**

## Air Quality

Indoor Air Comfort Gold

**Certified**

M1

**Certified**

## Memberships

WGBC Framework

**WGBC Framework**

UKGBC

**UKGBC**

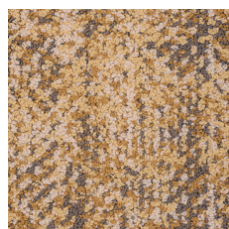
Emirates Green Building Council

**Emirates Green Building Council**

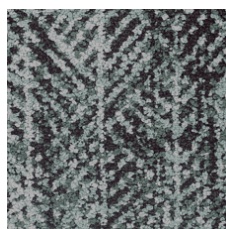
Chemsec

**Chemsec**

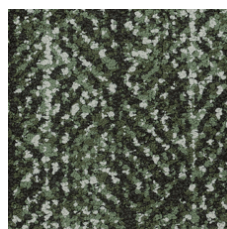
## Indice De Réflexion Lumineuse



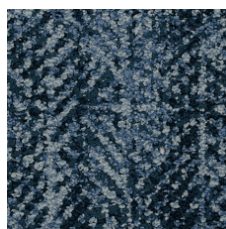
Golden 35210  
LRV 29.6 | L\* 61.32



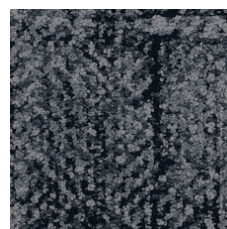
Mint 35327  
LRV 21.1 | L\* 53.07



Ivy 35375  
LRV 14.8 | L\* 45.31



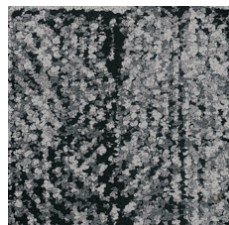
Overdye 35496  
LRV 9 | L\* 36.05



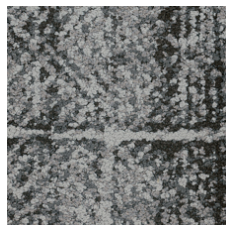
Raven 35505  
LRV 7.6 | L\* 33.11



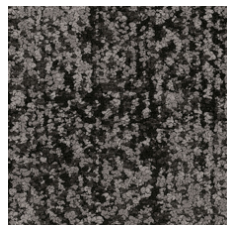
Greige 35516  
LRV 33.3 | L\* 64.43



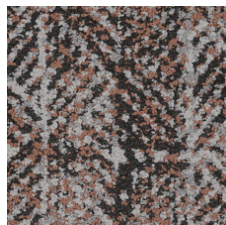
Fog 35518  
LRV 16.8 | L\* 48.02



Rainstorm 35535  
LRV 15.2 | L\* 45.89



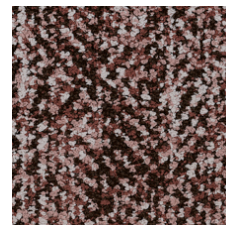
Espresso 35585  
LRV 9.6 | L\* 37.2



Apricot 35675  
LRV 17.2 | L\* 48.48



Truffle 35760  
LRV 14 | L\* 44.27



Rosewood 35870  
LRV 17.1 | L\* 48.39

## Informations Supplémentaires

\*\*Manufactured in ISO 9001 certified facility. Meets or exceeds all local and national regulations in country of manufacture.

[Installation Guidelines](#)

[Limitée commerciale de 15 ans](#)

Specifications are subject to nominal manufacturing variance. Material supply and/or manufacturing processes may necessitate changes without notice.

This product is an exclusive design and may not be duplicated in any manner. Use of this design in the creation of another product design is also strictly prohibited.

Visit [shawcontract.com/testing](https://shawcontract.com/testing) for more information.



Corporate Headquarters +1 800 257 7429 | +1 706 532 7984 | Atlanta +1 404 853 7429 | Bengaluru +91 80 6773 0202 | Beijing +86 10 6568 588 | Chicago +1 312 467 1331 | Dubai +971 4 584 6956 | Hong Kong +852 2623 0371 | London +44 207 961 4120 | Los Angeles +1 800 233 1614 | Melbourne +61 3 9939 8543 | Mexico City +55 5010 7600 | Mumbai +91 22 6284 5050 | Nantong +86 400 800 7429 | New York +1 212 953 7429 | Paris +33 (0) 1 81 22 44 39 | San Francisco +1 415 955 1920 | Shanghai +86 21 3338 4000 | Singapore +65 6733 1811 | Sydney +61 800 556 302

© 2025 Shaw Industries Group, Inc., a Berkshire Hathaway Company  
July 12, 2025

3 of 3