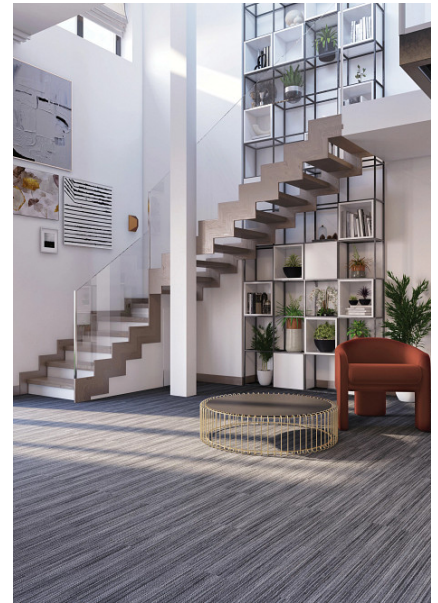


Braid Comfortworx® Tile

Style Number	C009W	
Collection	Suited	
Product Type	Carpet Tile	
Construction	Standard	Data + Performance
Type of Manufacture	ISO 2424	tufted 1/12" 47.2 per 10cm
Aspect	ISO 2424	Multi-Level Pattern Loop
Dye Method	EN 994	100% Solution Dyed
Dimensions	EN 994	25 cm x 100 cm 16 tiles (4 m²) per box
Primary Backing	ISO 2424	Pet Non-Woven
Secondary Backing	ISO 2424	Comfortworx® Tile Matrix Pad Layer Contains 90% Recycled Content
Pile Fibre Composition	ISO 2424	Eco Solution Q® Polyamide 6
Total Thickness	ISO 1765	10.4 mm
Effective Pile Thickness	ISO 1766	2.2 mm
Total Mass	ISO 8543	4085 g/m²
Nominal Total Pile Mass	ISO 2424	678 g/m²
Effective Pile Mass	ISO 8543	312 g/m²
Pile Density	ISO 8543	0.141 g/cm³



Performance

Number of Tufts	ISO 1763	195,000/m² 41.5 per 10cm
Electrostatic Propensity	ISO 6356	≤ 2.0 kv (Stroll Test)
Use Classification	EN 1307	33 Commercial Heavy
Luxury Class	EN 1307	LC1
Dimensional Stability	EN 986	≤ 0.2%
Impact Sound Insulation	ISO 10140	37db
Sound Absorption Classification	ISO 354/11654	0.30 Aw Class D*
Thermal Resistance m² K/W	ISO 8302	0.159 M² K/W Tog 1.59
Dry Slip Resistance	ISO 13893	Pass / No Pulled Loops
Colour Fastness To Light	ISO 105-B02	>6
Flammability	EN 13501-1	Bfl-S1 (Adhered Testing)
Castor Chair	EN 985	≥2.4 Continuous Use

15 Year Commercial Limited Warranty subject to installation in full accordance with the manufacturer's instructions and a regular effective cleaning and maintenance programme. Second location warranties are available with the use of non-adhesive IOBAC Magtabs and Tabit accessories.

Recommended Installation Method



Ashlar



Herringbone



Stagger



37dB



20

EU.DOP/2895/CPR/0820/1020/BT
OOSTERHOUT SHOWROOM, VAARTWEG 10, 4905
BL NETHERLANDS (NLD)
Notified Body 2895



22

UK.DOP/0338/CPR/0820/1020/BT
SHAW EUROPE LIMITED BLACKADDIE RD,
SANQUHAR DG4 6DB, UNITED KINGDOM
Approved Body 0338



EN14041:2004/AC:2006

For use as an indoor floor covering as specified by the manufacturer

Coordinating Products

Carpet Tile: **Beam Comfortworx® Tile, Textile Comfortworx® Tile, Check Comfortworx® Tile, Jacquard Comfortworx® Tile, Houndstooth Comfortworx® Tile, Houndstooth Taskworx® Tile, Check Taskworx® Tile, Textile Taskworx® Tile, Jacquard Taskworx® Tile, Beam Taskworx® Tile, Braid Taskworx® Tile**

Product Transparency

Shaw Contract is dedicated to providing clients with a building chemistry that's safe and dependable. Working together, we will help you meet your goals as they pertain to material health. ComfortWorx® products are Cradle to Cradle Certified® Bronze and assessed for impacts on human health and the environment. This product can be recycled. When it's time to replace, we can collect through our re-[TURN] scheme in EMEA.

Material Health & Environmental Certifications

Declaration of Performance	EU.DOP/2895/CPR/0820/1020/BT
Environmental Product Declaration (EPD)	3rd Party Certified in Accordance with ISO14044, ISO14025 & EN15804
Environmental Guarantee*	Take Back Policy Offered For All Comfortworx Products
ISO 9001	Certified
Country of Origin**	United Kingdom
BREEAM Contribution Credit	Certificate of Approval Schools/Offices/Health/Industrial Shed Retail

WELL V2 Contribution Credit

X11 Long Term Emissions Control Part 2: Flooring Optimization	M1> Emissions Class For Building Material
--	---

Leed v4 Contribution Credits

MR Credit: Building Product Disclosure and Optimization Environmental Product Declarations - Option 1: Environmental Product Declaration (EPD)	3rd Party Certified in Accordance with ISO14044, ISO14025 & EN15804
MR Credit: Building Product Disclosure and Optimization Material Ingredients - Option 1: Material Ingredient Reporting	HPD (Version 2.1)
EQ Credit: Low Emitting Materials Option 1: Product Category Calculations	Certified

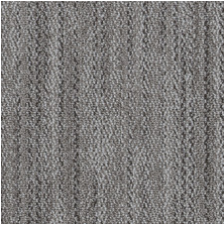

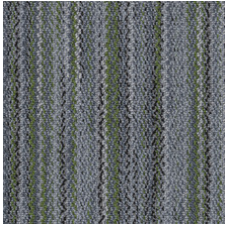

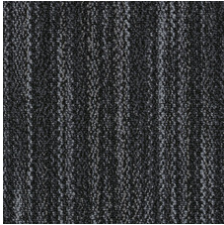
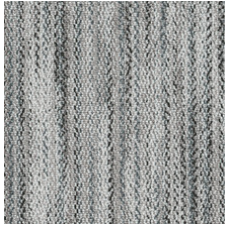
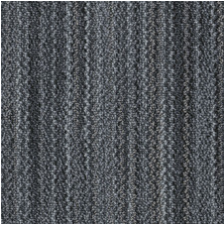
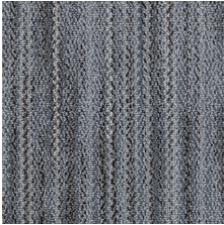
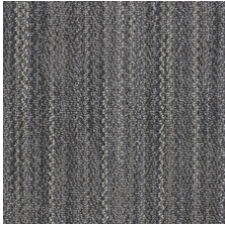
Air Quality

Indoor Air Comfort Gold	Certified
M1	Certified

Memberships

WGBC Framework	WGBC Framework
UKGBC	UKGBC
Emirates Green Building Council	Emirates Green Building Council
Chemsec	Chemsec

Light Reflectance Value

					
Jute 79105 LRV 17.1 L* 48.36	Saffron 79210 LRV 26.1 L* 58.12	Bamboo 79375 LRV 15.5 L* 46.36	Indigo 79496 LRV 4.6 L* 25.67	Patent 79505 LRV 6.4 L* 30.34	Muslin 79516 LRV 24.5 L* 56.6
					
Mohair 79530 LRV 9.6 L* 37.07	Wool 79535 LRV 16.5 L* 47.65	Flax 79557 LRV 9.7 L* 37.31			

Additional Information

**Manufactured in ISO 9001 certified facility. Meets or exceeds all local and national regulations in country of manufacture.

[Installation Guidelines](#)

[15 Year Commercial Limited warranty](#)

Specifications are subject to nominal manufacturing variance. Material supply and/or manufacturing processes may necessitate changes without notice.

This product is an exclusive design and may not be duplicated in any manner. Use of this design in the creation of another product design is also strictly prohibited.

Visit shawcontract.com/testing for more information.

