

Fragment Colours Comfortworx® Tile

Stijlnummer	C039W	
Collectie	Floor Architecture III	
Producttype	Tapijttegel	
Construction	Standard	Data + Performance
Type Fabricage	ISO 2424	tufted 1/12" 47.2 per 10cm
Uitzicht	ISO 2424	Multilevel-Patroonlus
Verfmethode	EN 994	100% In Oplossing Geverfd
Productformaat	EN 994	50 cm x 50 cm 16 tiles (4 m²) per box
Primaire Backing	ISO 2424	Pet Nonwoven
Secundaire Backing	ISO 2424	Comfortworx® Tegel Matrix Padlaag Bevat 90% Gerecycleerd Materiaal
Vezel	ISO 2424	Ecosolution Q® Polyamide 6
Totale Dikte	ISO 1765	9.5 mm
Afgewerkte Pooldikte	ISO 1766	1.9 mm
Totale Massa	ISO 8543	4346 g/m²
Getuft Gewicht	ISO 2424	634 g/m²
Effectieve Poolmassa	ISO 8543	224 g/m²
Pool dichtheid	ISO 8543	0.120 g/cm³
Totaal Gerecycleerde Inhoud		57% (pre-consumer 45% post-consumer 12%)

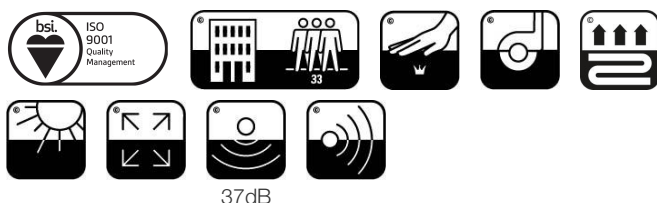
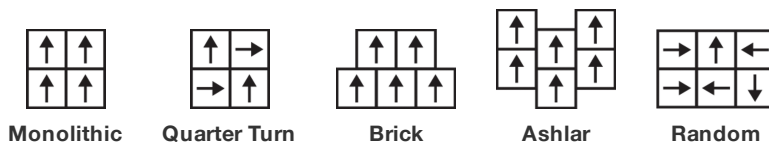


Gegevens

Steken	ISO 1763	188,000/m² 40 per 10cm
Elektrostatische Weerstand	ISO 6356	≤ 2.0 kv (Stroll Test)
Gebruik Classificatie	EN 1307	33 Commercial Heavy
Luxe klasse	EN 1307	LC1
Dimensionale Stabiliteit	EN 986	≤ 0.2%
Contactgeluidsisolatie	ISO 10140	37db
Geluidsabsorptieclassificatie	ISO 354/11654	0.30 Aw Class D
Warmteweerstand m² K/w	ISO 8302	0.145 M² K/W Tog 1.45
Weerstand Tegen Droog Uitglijden	ISO 13893	Pass / No Pulled Loops
Kleurvastheid Voor Licht	ISO 105-B02	>6
Ontvlambaarheid	EN 13501-1	Bfl-S1 (Adhered Testing)
Stoel Met Wieljes	EN 985	≥2.4 Continuous USE

15 Jaar Commercieel Beperkt subject to installation in full accordance with the manufacturer's instructions and a regular effective cleaning and maintenance programme. Second location warranties are available with the use of non-adhesive IOBAC Magtabs and Tabit accessories.

Aanbevolen Installatiemethode



Corporate Headquarters +1 800 257 7429 | +1 706 532 7984 | Atlanta +1 404 853 7429 | Bengaluru +91 80 6773 0202 | Beijing +86 10 6568 588 | Chicago +1 312 467 1331 | Dubai +971 4 584 6956 | Hong Kong +852 2623 0371 | London +44 207 961 4120 | Los Angeles +1 800 233 1614 | Melbourne +61 3 9939 8543 | Mexico City +55 5010 7600 | Mumbai +91 22 6284 5050 | Nantong +86 400 800 7429 | New York +1 212 953 7429 | Paris +33 (0) 1 81 22 44 39 | San Francisco +1 415 955 1920 | Shanghai +86 21 3338 4000 | Singapore +65 6733 1811 | Sydney +61 800 556 302

Coördinerende Producten

Carpet Tile: **Stone Comfortworx® Tile, Fragment Comfortworx® Tile, Formation Colours Comfortworx® Tile, Stone Colours Comfortworx® Tile, Formation Comfortworx® Tile, Fragment Taskworx® Tile, Stone Taskworx® Tile, Formation Colours Ecoworx S® Tile, Fragment Colours Ecoworx S® Tile, Formation Colours Taskworx® Tile, Fragment Colours Taskworx® Tile, Fragment Ecoworx S® Tile, Stone Ecoworx S® Tile, Formation Taskworx® Tile, Formation Ecoworx S® Tile, Stone Colours Taskworx® Tile, Stone Colours Ecoworx S® Tile**

Kenmerken + Certificeringen

Environmental Product Declaration (EPD)

milieugarantie

ISO 9001

land van herkomst

BREEAM Contribution Credit

3de Partij Gecertificeerd in Overeenstemming Met ISO14044, ISO14025 & EN15804

Take Back Policy Offered For All Comfortworx Products

Gecertificeerd

Verenigd Koninkrijk

Certificate of Approval

Schools/Offices/Health/Industrial Shed

Retail

Well V2 Contribution Credit

X11 Langetermijn-emissiebeheersing - deel 2: Optimalisering van vloeren - 1 pt **M1> Emissions Class For Building Material**

Groen Leed Bijdragekrediet

"MR-krediet: openbaarmaking en optimalisering van bouwproducten
Milieuproductverklaringen - Optie 1: Milieuproductverklaring (EPD)"

"MR-krediet: Openbaarmaking en optimalisering van bouwproducten
Materiaalingsrediënten - Optie 1: Rapportage materiaalingsrediënten"

3rd Party Certified in Accordance with ISO14044, ISO14025 & EN15804

HPD (Version 2.1)

Memberships

WGBC Framework

UKGBC

Emirates Green Building Council

Chemsec

WGBC Framework

UKGBC

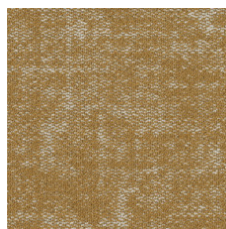
Emirates Green Building Council

Chemsec

Lichtreflectiewaarde



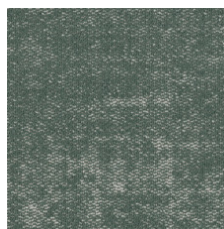
Oatmeal 04111
LRV 27 | L* 58.98



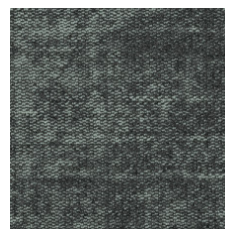
Brushed Gold 04210
LRV 22.4 | L* 54.44



Midnight Brushed Gold
04211
LRV 6.9 | L* 31.52



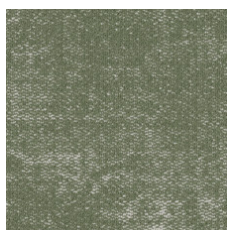
Mineral 04327
LRV 17.9 | L* 49.42



Midnight Mineral 04328
LRV 8.3 | L* 34.63



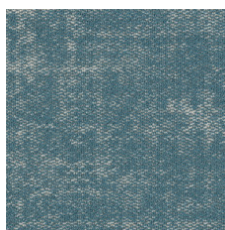
Racing Green 04334
LRV 5.3 | L* 27.67



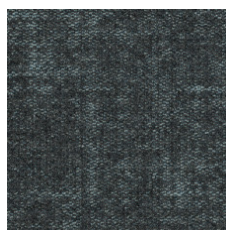
Sage 04375
LRV 19.3 | L* 51.02



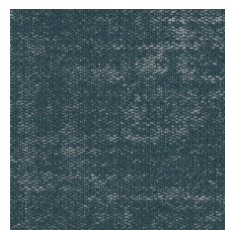
Midnight Sage 04376
LRV 6.4 | L* 30.37



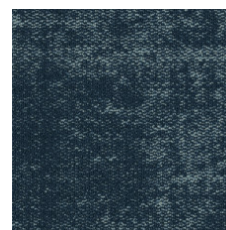
Sky 04411
LRV 18.8 | L* 50.5



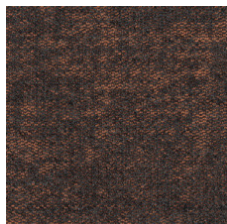
Midnight Sky 04412
LRV 6.8 | L* 31.43



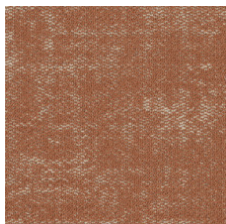
Steel Blue 04447
LRV 12.3 | L* 41.66



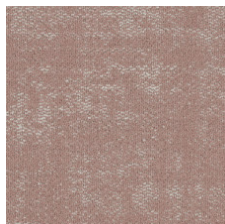
Denim 04486
LRV 5.2 | L* 27.29



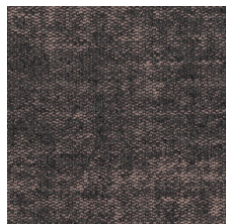
Midnight Apricot 04674
LRV 7 | L* 31.79



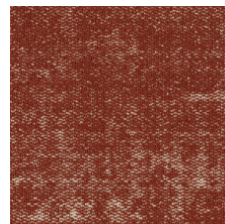
Apricot 04675
LRV 18.4 | L* 50.03



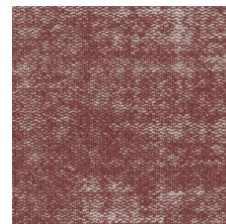
Powder Pink 04800
LRV 24.1 | L* 56.17



Midnight Powder Pink
04801
LRV 8.4 | L* 34.83



Copper 04865
LRV 12.1 | L* 41.43



Rosewood 04870
LRV 13.4 | L* 43.39

Aanvullende Informatie

**Manufactured in ISO 9001 certified facility. Meets or exceeds all local and national regulations in country of manufacture.

[Installation Guidelines](#)

[15 jaar commercieel beperkt](#)

Specifications are subject to nominal manufacturing variance. Material supply and/or manufacturing processes may necessitate changes without notice.

This product is an exclusive design and may not be duplicated in any manner. Use of this design in the creation of another product design is also strictly prohibited.

Visit shawcontract.com/testing for more information.



Corporate Headquarters +1 800 257 7429 | +1 706 532 7984 | Atlanta +1 404 853 7429 | Bengaluru +91 80 6773 0202 | Beijing +86 10 6568 588 | Chicago +1 312 467 1331 | Dubai +971 4 584 6956 | Hong Kong +852 2623 0371 | London +44 207 961 4120 | Los Angeles +1 800 233 1614 | Melbourne +61 3 9939 8543 | Mexico City +55 5010 7600 | Mumbai +91 22 6284 5050 | Nantong +86 400 800 7429 | New York +1 212 953 7429 | Paris +33 (0) 1 81 22 44 39 | San Francisco +1 415 955 1920 | Shanghai +86 21 3338 4000 | Singapore +65 6733 1811 | Sydney +61 800 556 302

© 2025 Shaw Industries Group, Inc., a Berkshire Hathaway Company
July 1, 2025

3 of 3