

Establish Comfortworx® Tile

Stijlnummer	C021W	
Collectie	Assembly	
Producttype	Tapijttegel	
Construction	Standard	Data + Performance
Type Fabricage	ISO 2424	tufted 1/12" 47.2 per 10cm
Uitzicht	ISO 2424	Multilevel-Patroonlus
Verfmethode	EN 994	100% In Oplossing Geveerd
Productformaat	EN 994	25 cm x 100 cm 16 tiles (4 m²) per box
Primaire Backing	ISO 2424	Pet Nonwoven
Secundaire Backing	ISO 2424	Comfortworx® Tegel Matrix Padlaag Bevat 90% Gerecycleerd Materiaal
Vezel	ISO 2424	Ecosolution Q® Polyamide 6
Totale Dikte	ISO 1765	10.7 mm
Afgewerkte Pooldikte	ISO 1766	2.4 mm
Totale Massa	ISO 8543	4797 g/m²
Getuft Gewicht	ISO 2424	653 g/m²
Effectieve Poolmassa	ISO 8543	309 g/m²
Pooldichtheid	ISO 8543	0.126 g/cm³
Totaal Gerecycleerde Inhoud		55% (pre-consumer 44% post-consumer 11%)

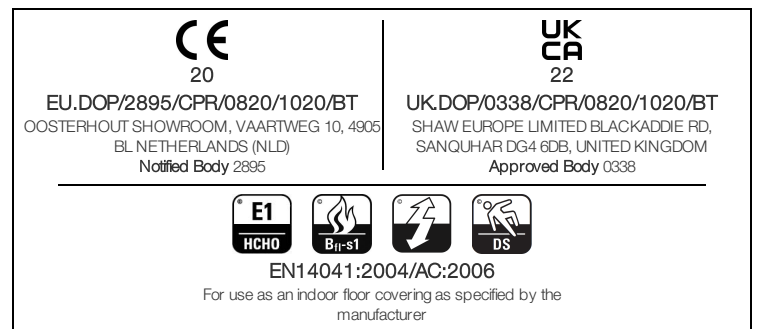
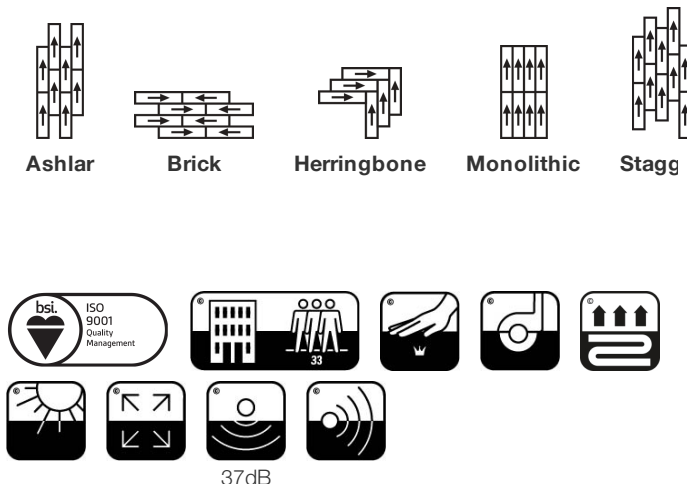


Gegevens

Steken	ISO 1763	165,000/m² 35.0 per 10cm
Elektrostatische Weerstand	ISO 6356	≤ 2.0 kv (Stroll Test)
Gebruik Classificatie	EN 1307	33 Commercial Heavy
Luxeklasse	EN 1307	LC1
Dimensionale Stabiliteit	EN 986	≤ 0.2%
Contactgeluidsisolatie	ISO 10140	37db
Geluidsabsorptieclassificatie	ISO 354/11654	0.30 Aw Class D
Warmteweerstand m² K/w	ISO 8302	0.151 M² K/W Tog 1.15
Weerstand Tegen Droog Uitglijden	ISO 13893	Pass / No Pulled Loops
Kleurvastheid Voor Licht	ISO 105-B02	>6
Ontvlambaarheid	EN 13501-1	Bfl-S1 (Adhered Testing)
Stoel Met Wielletjes	EN 985	≥2.4 Continuous USE

15 Jaar Commercieel Beperkt subject to installation in full accordance with the manufacturer's instructions and a regular effective cleaning and maintenance programme. Second location warranties are available with the use of non-adhesive IOBAC Magtabs and Tabit accessories.

Aanbevolen Installatiemethode



Coördinerende Producten

Carpet Tile: **Convene Taskworx® Tile, Support Taskworx® Tile, Establish Taskworx® Tile**

Kenmerken + Certificeringen

Declaration of Performance

EU.DOP/2895/CPR/0820/1020/BT

Environmental Product Declaration (EPD)

3de Partij Gecertificeerd in Overeenstemming Met ISO14044, ISO14025 & EN15804

milieugarantie

Take Back Policy Offered For All Comfortworx Products

ISO 9001

Gecertificeerd

land van herkomst

Verenigd Koninkrijk

BREEAM Contribution Credit

**Certificate of Approval
Schools/Offices/Health/Industrial Shed
Retail**

Well V2 Contribution Credit

X11 Langetermijn-emissiebeheersing - deel 2: Optimalisering van vloeren - 1 pt **M1> Emissions Class For Building Material**

Groen Leed Bijdragekrediet

"MR-krediet: openbaarmaking en optimalisering van bouwproducten
Milieuproductverklaringen - Optie 1: Milieuproductverklaring (EPD)"

3rd Party Certified in Accordance with ISO14044, ISO14025 & EN15804

"MR-krediet: Openbaarmaking en optimalisering van bouwproducten
Materiaalingsrediënten - Optie 1: Rapportage materiaalingsrediënten"

HPD (Version 2.1)

Air Quality

Indoor Air Comfort Gold

Certified

M1

Certified

Memberships

WGBC Framework

WGBC Framework

UKGBC

UKGBC

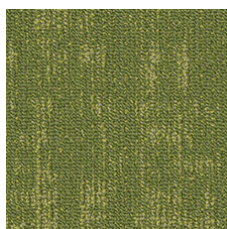
Emirates Green Building Council

Emirates Green Building Council

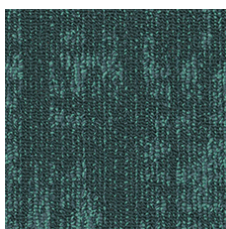
Chemsec

Chemsec

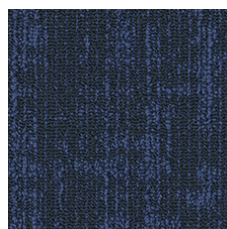
Available Colorways



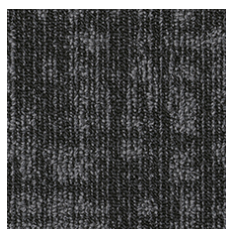
Brilliant 67325



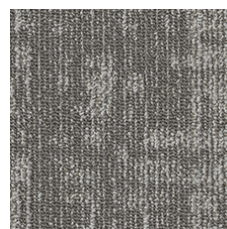
Vivid 67375



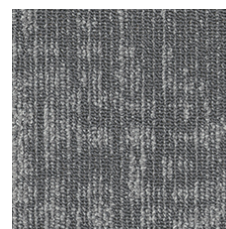
Clear 67486



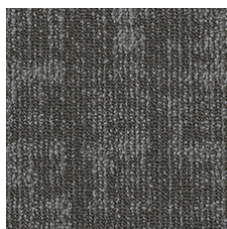
System 67505



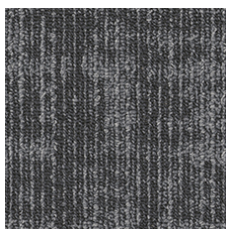
Interaction 67515



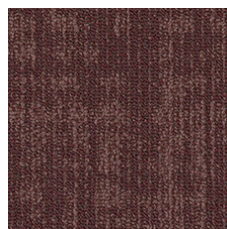
Network 67535



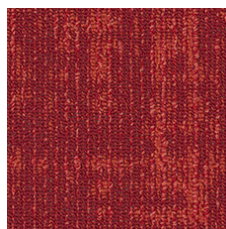
Link 67555



Foundation 67580



Dynamic 67850



Radiant 67855

Aanvullende Informatie

**Manufactured in ISO 9001 certified facility. Meets or exceeds all local and national regulations in country of manufacture.

[Installation Guidelines](#)

15 jaar commercieel beperkt

Specifications are subject to nominal manufacturing variance. Material supply and/or manufacturing processes may necessitate changes without notice.

This product is an exclusive design and may not be duplicated in any manner. Use of this design in the creation of another product design is also strictly prohibited.

Visit shawcontract.com/testing for more information.



Corporate Headquarters +1 800 257 7429 | +1 706 532 7984 | Atlanta +1 404 853 7429 | Bengaluru +91 80 6773 0202 | Beijing +86 10 6568 588 | Chicago +1 312 467 1331 | Dubai +971 4 584 6956 | Hong Kong +852 2623 0371 | London +44 207 961 4120 | Los Angeles +1 800 233 1614 | Melbourne +61 3 9939 8543 | Mexico City +55 5010 7600 | Mumbai +91 22 6284 5050 | Nantong +86 400 800 7429 | New York +1 212 953 7429 | Paris +33 (0) 1 81 22 44 39 | San Francisco +1 415 955 1920 | Shanghai +86 21 3338 4000 | Singapore +65 6733 1811 | Sydney +61 800 556 302

© 2025 Shaw Industries Group, Inc., a Berkshire Hathaway Company
July 18, 2025

3 of 3