

## Textile Comfortworx® Tile

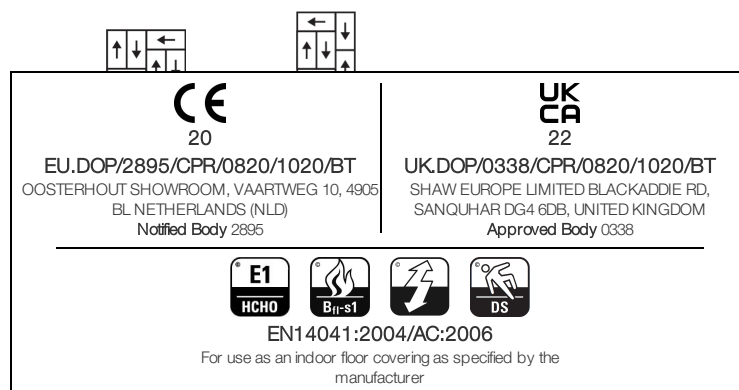
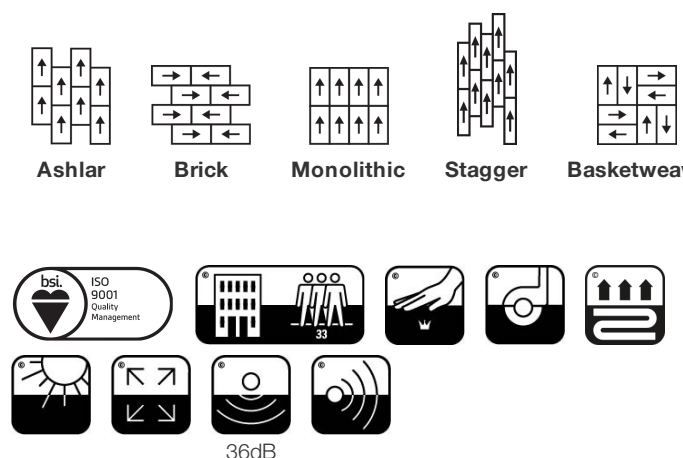
Stijlnummer	<b>C020W</b>	
Collectie	<b>Suited</b>	
Producttype	<b>Tapijttegel</b>	
Construction	Standard	Data + Performance
Type Fabricage	<b>ISO 2424</b>	<b>tufted 1/10"   39.4 per 10cm</b>
Uitzicht	<b>ISO 2424</b>	<b>Multilevel-Patroonlus</b>
Verfmethode	<b>EN 994</b>	<b>100% In Oplossing Geverfd</b>
Productformaat	<b>EN 994</b>	<b>50 cm x 100 cm   6 tiles (3 m²) per box</b>
Primaire Backing	<b>ISO 2424</b>	<b>Pet Nonwoven</b>
Secundaire Backing	<b>ISO 2424</b>	<b>Comfortworx® Tegel   Matrix Padlaag Bevat 90% Gerecycleerd Materiaal</b>
Vezel	<b>ISO 2424</b>	<b>Ecosolution Q® Polyamide 6</b>
Totale Dikte	<b>ISO 1765</b>	<b>12.0 mm</b>
Afgewerkte Pooldikte	<b>ISO 1766</b>	<b>2.3 mm</b>
Totale Massa	<b>ISO 8543</b>	<b>4779 g/m²</b>
Getuft Gewicht	<b>ISO 2424</b>	<b>949 g/m²</b>
Effectieve Poolmassa	<b>ISO 8543</b>	<b>280 g/m²</b>
Pooldichtheid	<b>ISO 8543</b>	<b>0.117 g/cm³</b>
Totaal Gerecycleerde Inhoud		<b>53% (pre-consumer 42%   post-consumer 11%)</b>

## Gegevens

Steken	<b>ISO 1763</b>	<b>156,000/m²   39.8 per 10cm</b>
Beschermende Behandelingen		<b>SSP® Shaw Grondbescherming</b>
Elektrostatische Weerstand	<b>ISO 6356</b>	<b>≤ 2.0 kv (Stroll Test)</b>
Gebruik Classificatie	<b>EN 1307</b>	<b>33 Commercial Heavy</b>
Luxe klasse	<b>EN 1307</b>	<b>LC1</b>
Dimensionale Stabiliteit	<b>EN 986</b>	<b>≤ 0.2%</b>
Contactgeluidsisolatie	<b>ISO 10140</b>	<b>36db</b>
Geluidsabsorptieclassificatie	<b>ISO 354/11654</b>	<b>0.35 Aw   Class D</b>
Warmteweerstand m² K/w	<b>ISO 8302</b>	<b>0.166 M² K/W Tog 1.66</b>
Weerstand Tegen Droog Uitglijden	<b>ISO 13893</b>	<b>Pass / No Pulled Loops</b>
Kleurvastheid Voor Licht	<b>ISO 105-B02</b>	<b>&gt;6</b>
Ontvlambaarheid	<b>EN 13501-1</b>	<b>Bfl-S1 (Adhered Testing)</b>
Stoel Met Wieltjes	<b>EN 985</b>	<b>≥2.4 Continuous Use</b>

**15 Jaar Commercieel Beperkt** subject to installation in full accordance with the manufacturer's instructions and a regular effective cleaning and maintenance programme. Second location warranties are available with the use of non-adhesive IOBAC Magtabs and Tabit accessories.

## Aanbevolen Installatiemethode



## Coördinerende Producten

Carpet Tile: **Beam Comfortworx® Tile, Braid Comfortworx® Tile, Check Comfortworx® Tile, Houndstooth Taskworx® Tile, Check Taskworx® Tile, Textile Taskworx® Tile, Jacquard Taskworx® Tile, Beam Taskworx® Tile, Braid Taskworx® Tile**

## Kenmerken + Certificeringen

Declaration of Performance

EU.DOP/2895/CPR/0820/1020/BT

Environmental Product Declaration (EPD)

**3de Partij Gecertificeerd in Overeenstemming Met ISO14044, ISO14025 & EN15804**

milieugarantie

**Take Back Policy Offered For All Comfortworx Products**

ISO 9001

**Gecertificeerd**

land van herkomst

**Verenigd Koninkrijk**

BREEAM Contribution Credit

**Certificate of Approval  
Schools/Offices/Health/Industrial Shed  
Retail**

## Well V2 Contribution Credit

X11 Langetermijn-emissiebeheersing - deel 2: Optimalisering van vloeren - 1 pt

**M1> Emissions Class For Building Material**

## Groen Leed Bijdragekrediet

"MR-krediet: openbaarmaking en optimalisering van bouwproducten  
Milieuproductverklaringen - Optie 1: Milieuproductverklaring (EPD)"**3rd Party Certified in Accordance with ISO14044, ISO14025 & EN15804**"MR-krediet: Openbaarmaking en optimalisering van bouwproducten  
Materiaal ingrediënten - Optie 1: Rapportage materiaal ingrediënten"**HPD ( Version 2.1 )**

## Air Quality

Indoor Air Comfort Gold

**Certified**

M1

**Certified**

## Memberships

WGBC Framework

**WGBC Framework**

UKGBC

**UKGBC**

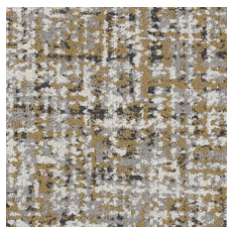
Emirates Green Building Council

**Emirates Green Building Council**

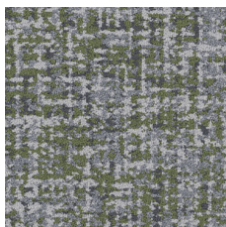
Chemsec

**Chemsec**

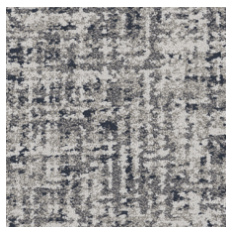
### Available Colorways



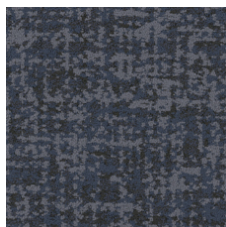
Saffron 79210



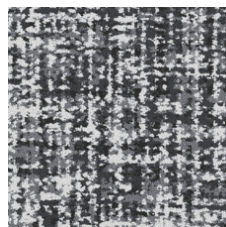
Bamboo 79375



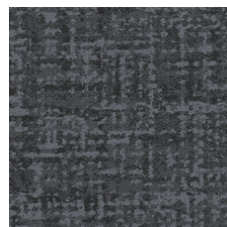
Denim 79485



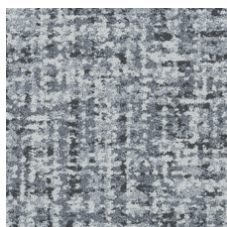
Indigo 79496



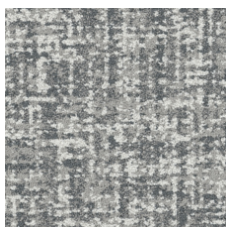
Merino 79500



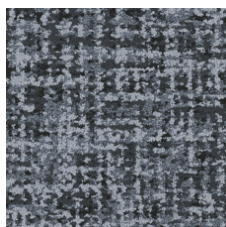
Patent 79505



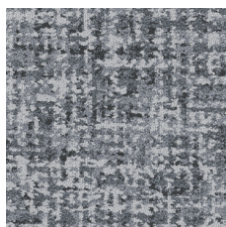
Cotton 79515



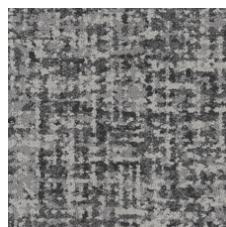
Muslin 79516



Mohair 79530



Wool 79535



Flax 79557



Angora 79596

### Aanvullende Informatie

\*\*Manufactured in ISO 9001 certified facility. Meets or exceeds all local and national regulations in country of manufacture.

[Installation Guidelines](#)

15 jaar commercieel beperkt

Specifications are subject to nominal manufacturing variance. Material supply and/or manufacturing processes may necessitate changes without notice.

This product is an exclusive design and may not be duplicated in any manner. Use of this design in the creation of another product design is also strictly prohibited.

Visit [shawcontract.com/testing](https://shawcontract.com/testing) for more information.

