

Check Comfortworx® Tile

Style Number	C026W	
Collection	Suited	
Product Type	Carpet Tile	
Construction	Standard	Data + Performance
Type of Manufacture	ISO 2424	tufted 1/10" 39.4 per 10cm
Aspect	ISO 2424	Multi-Level Pattern Loop
Dye Method	EN 994	100% Solution Dyed
Dimensions	EN 994	50 cm x 100 cm 6 tiles (3 m²) per box
Primary Backing	ISO 2424	Pet Non-Woven
Secondary Backing	ISO 2424	Comfortworx® Tile Matrix Pad Layer Contains 90% Recycled Content
Pile Fibre Composition	ISO 2424	Eco Solution Q® Polyamide 6
Total Thickness	ISO 1765	11.7 mm
Effective Pile Thickness	ISO 1766	2.4 mm
Total Mass	ISO 8543	4588 g/m²
Nominal Total Pile Mass	ISO 2424	949 g/m²
Effective Pile Mass	ISO 8543	287 g/m²
Pile Density	ISO 8543	0.116 g/cm³

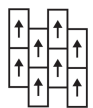


Performance

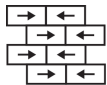
Number of Tufts	ISO 1763	142,000/m² 36.1 per 10cm
Protective Treatments		SSP® Shaw Soil Protection
Electrostatic Propensity	ISO 6356	≤ 2.0 kv (Stroll Test)
Use Classification	EN 1307	33 Commercial Heavy
Luxury Class	EN 1307	LC1
Dimensional Stability	EN 986	≤ 0.2%
Impact Sound Insulation	ISO 10140	36db*
Sound Absorption Classification	ISO 354/11654	0.35 Aw Class D
Thermal Resistance m² K/W	ISO 8302	0.177 M² K/W Tog 1.77
Dry Slip Resistance	ISO 13893	Failed
Colour Fastness To Light	ISO 105-B02	>6
Flammability	EN 13501-1	Bfl-S1 (Adhered Testing)
Castor Chair	EN 985	≥2.4 Continuous Use

15 Year Commercial Limited Warranty subject to installation in full accordance with the manufacturer's instructions and a regular effective cleaning and maintenance programme. Second location warranties are available with the use of non-adhesive IOBAC Magtabs and Tabit accessories.

Recommended Installation Method



Ashlar



Brick



Monolithic



Basketweave



Half Basketweave



Boxed In



36dB

Corporate Headquarters +1 800 257 7429 | +1 706 532 7984 | Atlanta +1 404 853 7429 | Bengaluru +91 80 6773 0202 | Beijing +86 10 6568 588 | Chicago +1 312 467 1331 | Dubai +971 4 584 6956 | Hong Kong +852 2623 0371 | London +44 207 961 4120 | Los Angeles +1 800 233 1614 | Melbourne +61 3 9939 8543 | Mexico City +55 5010 7600 | Mumbai +91 22 6284 5050 | Nantong +86 400 800 7429 | New York +1 212 953 7429 | Paris +33 (0) 1 81 22 44 39 | San Francisco +1 415 955 1920 | Shanghai +86 21 3338 4000 | Singapore +65 6733 1811 | Sydney +61 800 556 302

Coordinating Products

Carpet Tile: **Beam Comfortworx® Tile, Braid Comfortworx® Tile, Textile Comfortworx® Tile, Jacquard Comfortworx® Tile, Houndstooth Comfortworx® Tile, Houndstooth Taskworx® Tile, Check Taskworx® Tile, Textile Taskworx® Tile, Jacquard Taskworx® Tile, Beam Taskworx® Tile, Braid Taskworx® Tile**

Product Transparency

Shaw Contract is dedicated to providing clients with a building chemistry that's safe and dependable. Working together, we will help you meet your goals as they pertain to material health. ComfortWorx® products are Cradle to Cradle Certified® Bronze and assessed for impacts on human health and the environment. This product can be recycled. When it's time to replace, we can collect through our re-[TURN] scheme in EMEA.

Material Health & Environmental Certifications

Environmental Product Declaration (EPD)

Environmental Guarantee*

ISO 9001

Country of Origin**

BREEAM Contribution Credit

3rd Party Certified in Accordance with ISO 14044, ISO 14025 & EN15804

Take Back Policy Offered For All Comfortworx Products

Certified

United Kingdom

Certificate of Approval

**Schools/Offices/Health/Industrial Shed
Retail**

WELL V2 Contribution Credit

X11 Long Term Emissions Control

Part 2: Flooring Optimization

M1> Emissions Class For Building Material

Leed v4 Contribution Credits

MR Credit: Building Product Disclosure and Optimization

Environmental Product Declarations - Option 1: Environmental Product Declaration (EPD)

MR Credit: Building Product Disclosure and Optimization

Material Ingredients - Option 1: Material Ingredient Reporting

EQ Credit: Low Emitting Materials

Option 1: Product Category Calculations

3rd Party Certified in Accordance with ISO 14044, ISO 14025 & EN15804

HPD (Version 2.1)

Certified

Air Quality

Indoor Air Comfort Gold

M1

Certified

Certified

Memberships

WGBC Framework

UKGBC

Emirates Green Building Council

Chemsec

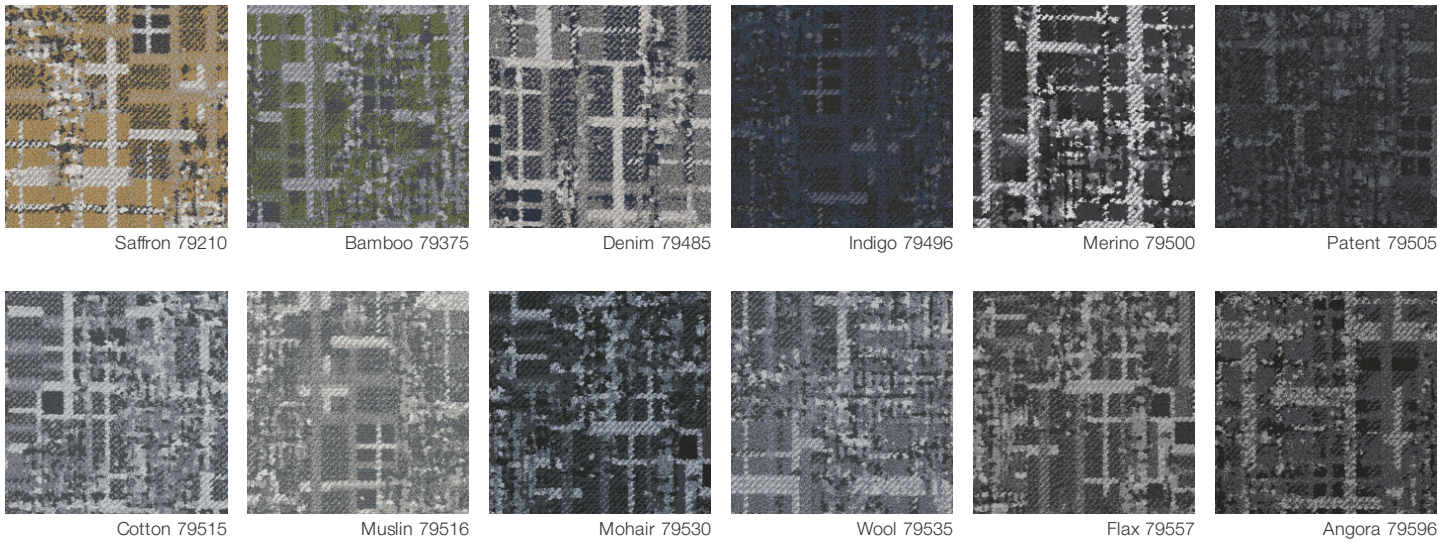
WGBC Framework

UKGBC

Emirates Green Building Council

Chemsec

Available Colorways



Additional Information

**Manufactured in ISO 9001 certified facility. Meets or exceeds all local and national regulations in country of manufacture.

[Installation Guidelines](#)

[15 Year Commercial Limited warranty](#)

Specifications are subject to nominal manufacturing variance. Material supply and/or manufacturing processes may necessitate changes without notice.

This product is an exclusive design and may not be duplicated in any manner. Use of this design in the creation of another product design is also strictly prohibited.

Visit shawcontract.com/testing for more information.

