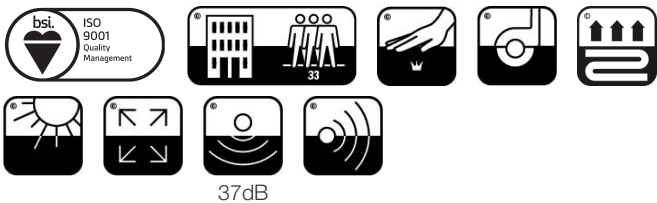
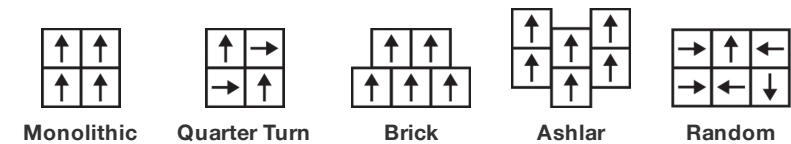


Stijlnummer	C041W	
Collectie	Floor Architecture III	
Producttype	Tapijttegel	
Construction	Standard	Data + Performance
Type Fabricage	ISO 2424	tufted 1/12"   47.2 per 10cm
Uitzicht	ISO 2424	Multilevel-Patroonlus
Verfmethode	EN 994	100% In Oplossing Geverfd
Productformaat	EN 994	50 cm x 50 cm   16 tiles (4 m²) per box
Primaire Backing	ISO 2424	Pet Nonwoven
Secundaire Backing	ISO 2424	Comfortworx® Tegel   Matrix Padlaag Bevat 90% Gerecycleerd Materiaal
Vezel	ISO 2424	Ecosolution Q® Polyamide 6
Totale Dikte	ISO 1765	10.0 mm
Afgewerkte Pooldikte	ISO 1766	2.1 mm
Totale Massa	ISO 8543	3741 g/m²
Getuft Gewicht	ISO 2424	630 g/m²
Effectieve Poolmassa	ISO 8543	275 g/m²
Pooldichtheid	ISO 8543	0.133 g/cm³
Gegevens		
Steken	ISO 1763	193,000/m²   41 per 10cm
Elektrostatische Weerstand	ISO 6356	≤ 2.0 kv (Stroll Test)
Gebruik Classificatie	EN 1307	33 Commercial Heavy
Luxeklasse	EN 1307	LC1
Dimensionale Stabiliteit	EN 986	≤ 0.2%
Contactgeluidsisolatie	ISO 10140	37db
Geluidsabsorptieclassificatie	ISO 354/11654	0.30 Aw   Class D
Warmteweerstand m² K/w	ISO 8302	0.167 M² K/W Tog 1.67
Weerstand Tegen Droog Uitglijden	ISO 13893	Pass / No Pulled Loops
Kleurvastheid Voor Licht	ISO 105-B02	>6
Ontvlambaarheid	EN 13501-1	Bfl-S1 (Adhered Testing)
Stoel Met Wieltjes	EN 985	≥2.4 Continuous USE
15 Jaar Commercieel Beperkt subject to installation in full accordance with the manufacturer's instructions and a regular effective cleaning and maintenance programme. Second location warranties are available with the use of non-adhesive IOBAC Magtabs and Tabit accessories.		

Aanbevolen Installatiemethode



## Coördinerende Producten

Carpet Tile: **Stone Comfortworx® Tile, Fragment Comfortworx® Tile, Formation Colours Comfortworx® Tile, Fragment Colours Comfortworx® Tile, Stone Colours Comfortworx® Tile, Fragment Taskworx® Tile, Stone Taskworx® Tile, Formation Colours Ecoworx S® Tile, Fragment Colours Ecoworx S® Tile, Formation Colours Taskworx® Tile, Fragment Colours Taskworx® Tile, Fragment Ecoworx S® Tile, Stone Ecoworx S® Tile, Formation Taskworx® Tile, Formation Ecoworx S® Tile, Stone Colours Taskworx® Tile, Stone Colours Ecoworx S® Tile**

## Kenmerken + Certificeringen

Environmental Product Declaration (EPD)

milieugarantie

ISO 9001

land van herkomst

BREEAM Contribution Credit

**3de Partij Gecertificeerd in Overeenstemming Met ISO14044, ISO14025 & EN15804**

**Take Back Policy Offered For All Comfortworx Products**

**Gecertificeerd**

**Verenigd Koninkrijk**

**Certificate of Approval**

**Schools/Offices/Health/Industrial Shed**

**Retail**

## Well V2 Contribution Credit

X11 Langetermijn-emissiebeheersing - deel 2: Optimalisering van vloeren - 1 **M1> Emissions Class For Building Material**  
pt

## Groen Leed Bijdragekrediet

"MR-krediet: openbaarmaking en optimalisering van bouwproducten  
Milieuproductverklaringen - Optie 1: Milieuproductverklaring (EPD)"

"MR-krediet: Openbaarmaking en optimalisering van bouwproducten  
Materiaalingsrediënten - Optie 1: Rapportage materiaalingsrediënten"

**3rd Party Certified in Accordance with ISO14044, ISO14025 & EN15804**

**HPD ( Version 2.1 )**

## Memberships

WGBC Framework

UKGBC

Emirates Green Building Council

Chemsec

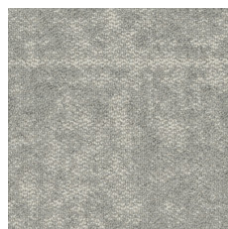
**WGBC Framework**

**UKGBC**

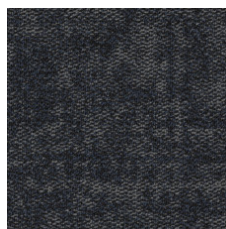
**Emirates Green Building Council**

**Chemsec**

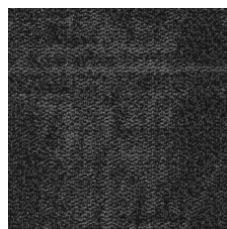
## Lichtreflectiewaarde



Marble 53100  
LRV 27.4 | L\* 59.35



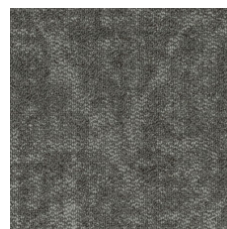
Azurite 53485  
LRV 3.3 | L\* 21.22



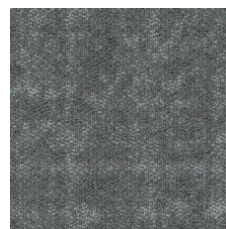
Granite 53500  
LRV 3.4 | L\* 21.73



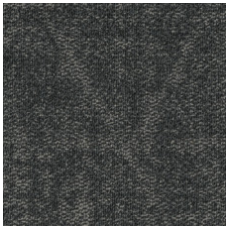
Mica 53518  
LRV 9.4 | L\* 36.74



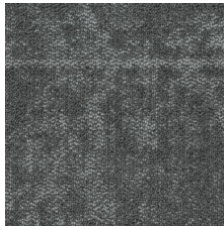
Mortar 53530  
LRV 13 | L\* 42.74



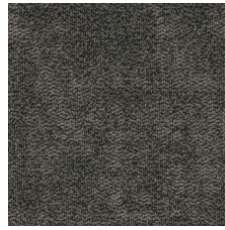
Limestone 53535  
LRV 13.1 | L\* 42.86



Anthracite 53555  
LRV 6.5 | L\* 30.68



Chromite 53580  
LRV 10 | L\* 37.93



Mix 53597

### Aanvullende Informatie

\*\*Manufactured in ISO 9001 certified facility. Meets or exceeds all local and national regulations in country of manufacture.

[Installation Guidelines](#)

[15 jaar commercieel beperkt](#)

Specifications are subject to nominal manufacturing variance. Material supply and/or manufacturing processes may necessitate changes without notice.

This product is an exclusive design and may not be duplicated in any manner. Use of this design in the creation of another product design is also strictly prohibited.

Visit [shawcontract.com/testing](https://shawcontract.com/testing) for more information.



Corporate Headquarters +1 800 257 7429 | +1 706 532 7984 | Atlanta +1 404 853 7429 | Bengaluru +91 80 6773 0202 | Beijing +86 10 6568 588 | Chicago +1 312 467 1331 | Dubai +971 4 584 6956 | Hong Kong +852 2623 0371 | London +44 207 961 4120 | Los Angeles +1 800 233 1614 | Melbourne +61 3 9939 8543 | Mexico City +55 5010 7600 | Mumbai +91 22 6284 5050 | Nantong +86 400 800 7429 | New York +1 212 953 7429 | Paris +33 (0) 1 81 22 44 39 | San Francisco +1 415 955 1920 | Shanghai +86 21 3338 4000 | Singapore +65 6733 1811 | Sydney +61 800 556 302

© 2025 Shaw Industries Group, Inc., a Berkshire Hathaway Company  
July 18, 2025

3 of 3