

Interlaced Comfortworx® Tile

Style Number	C043W	
Collection	Creative Connections	
Product Type	Carpet Tile	
Construction	Standard	Data + Performance
Type of Manufacture	ISO 2424	tufted 1/10" 39.4 per 10cm
Aspect	ISO 2424	Multi-Level Pattern Loop
Dye Method	EN 994	100% Solution Dyed
Dimensions	EN 994	50 cm x 50 cm 16 tiles (4 m²) per box
Primary Backing	ISO 2424	Pet Non-Woven
Secondary Backing	ISO 2424	Comfortworx® Tile Matrix Pad Layer Contains 90% Recycled Content
Total Thickness	ISO 1765	9.9 mm
Effective Pile Thickness	ISO 1766	2.2 mm
Total Mass	ISO 8543	3707 g/m²
Nominal Total Pile Mass	ISO 2424	600 g/m²
Effective Pile Mass	ISO 8543	241 g/m²
Pile Density	ISO 8543	0.107 g/cm³
Total Recycled Content	69% (pre-consumer 57% post-consumer 12%)	

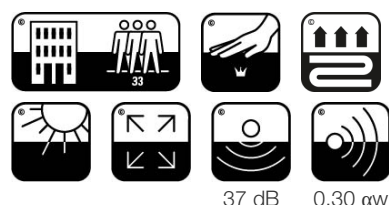
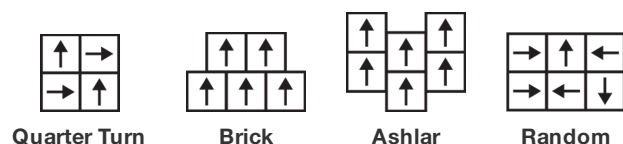


Performance

Number of Tufts	ISO 1763	165,000/m² 42 per 10cm
Electrostatic Propensity	ISO 6356	≤ 2.0 kv (Stroll Test)
Use Classification	EN 1307	33 Commercial Heavy
Luxury Class	EN 1307	LC1
Dimensional Stability	EN 986	≤ 0.2%
Impact Sound Insulation	ISO 10140	37 Db
Sound Absorption Classification	ISO 354/11654	0.30 αW Class D
Thermal Resistance m² K/W	ISO 8302	0.157 M² K/W Tog 1.57
Dry Slip Resistance	ISO 13893	Pass / No Pulled Loops
Colour Fastness To Light	ISO 105-B02	>6
Flammability	EN 13501-1	Bfl-S1 (Adhered Testing)
Castor Chair	EN 985	≥2.4 Intensive USE

15 Year Commercial Limited subject to installation in full accordance with the manufacturer's instructions and a regular effective cleaning and maintenance programme. Second location warranties are available with the use of non-adhesive IOBAC Magtabs and Tabit accessories.

Recommended Installation Method



Coordinating Products

Carpet Tile: **Interlaced Taskworx® Tile, Interlaced Ecoworx S® Tile, Understated Ecoworx S® Tile**



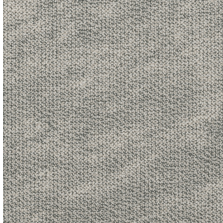


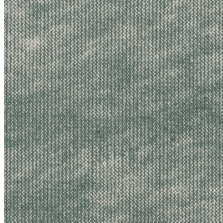
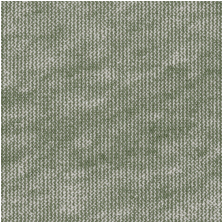
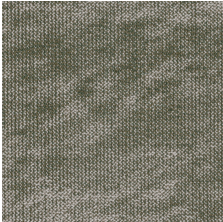
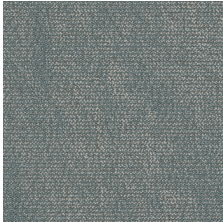
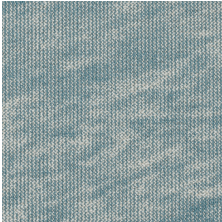
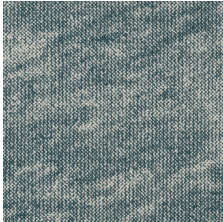
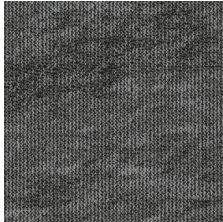
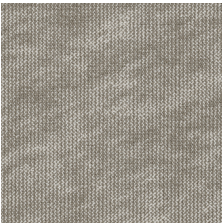
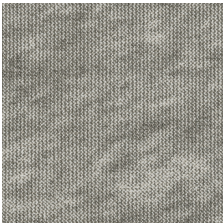
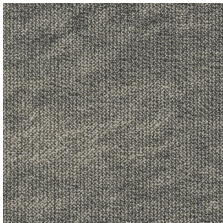
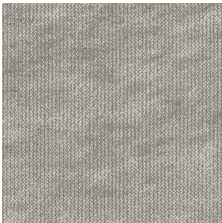
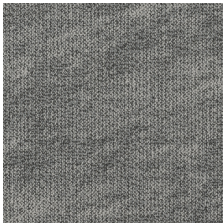
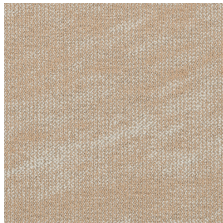
Material Health & Environmental Certifications

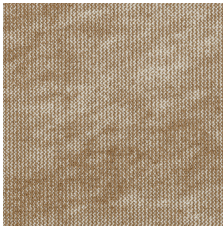
Embodied Carbon (Cradle to Gate)	4.58 kg CO ₂ /m ²
Life-Cycle Carbon Emissions	Low Embodied Carbon
Country of Origin**	United Kingdom
BREEAM Contribution Credit	Certificate of Approval Schools/Offices/Health/Industrial Shed Retail

Memberships

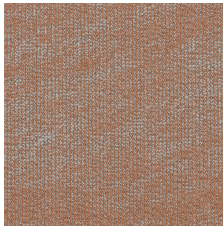
WGBC Framework	WGBC Framework
UKGBC	UKGBC
Emirates Green Building Council	Emirates Green Building Council
Chemsec	Chemsec

Light Reflectance Value

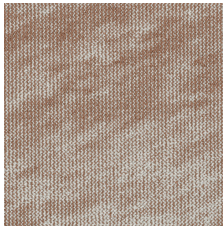
					
Buttermilk 46100 LRV 30.7 L* 62.25	Oyster 46101 LRV 27.3 L* 59.27	Silk 46105 LRV 29.9 L* 61.53	Oatmeal 46111 LRV 34.3 L* 65.24	Linen 46112 LRV 35.2 L* 65.89	Mineral 46327 LRV 22.2 L* 54.28
					
Sage 46375 LRV 29.4 L* 61.16	Khaki 46376 LRV 14.4 L* 44.85	Storm Cloud 46402 LRV 19.9 L* 50.54	Sky 46411 LRV 25 L* 57.11	Slate Blue 46447 LRV 29.1 L* 60.9	Lead 46500 LRV 8.7 L* 35.37
					
Mushroom 46514 LRV 26.7 L* 58.71	Seal 46516 LRV 26.8 L* 58.76	Stone 46518 LRV 29.2 L* 60.91	Pearl 46535 LRV 14.9 L* 45.48	Smoke 46580 LRV 16.9 L* 48.16	Shell 46601 LRV 25.3 L* 57.36



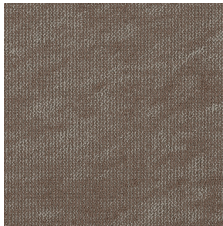
Medallion 46668
LRV 35.2 | L* 65.88



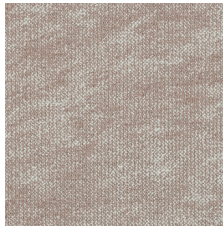
Dusty Apricot 46675
LRV 25.2 | L* 57.29



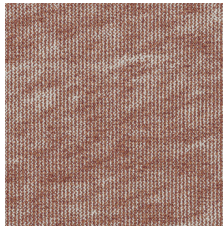
Bisque 46676
LRV 19.7 | L* 51.46



Walnut 46763
LRV 12.4 | L* 41.88



Powder Pink 46800
LRV 30.4 | L* 61.96



Rose 46870
LRV 22.3 | L* 54.32

H2791 H2791

Additional Information

15 year commercial limited

Specifications are subject to nominal manufacturing variance. Material supply and/or manufacturing processes may necessitate changes without notice.

This product is an exclusive design and may not be duplicated in any manner. Use of this design in the creation of another product design is also strictly prohibited.

Visit shawcontract.com/testing for more information.

