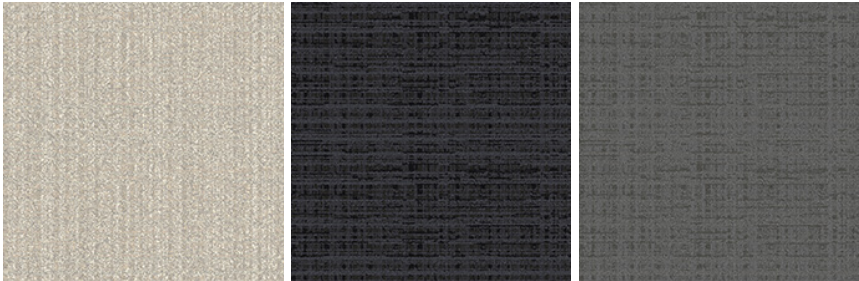


Strata 6x9

Product Type	Area Rug	
Collection	Noble Materials	
Style Number	G112R	
Construction	Multi-Level Pattern Cut/Loop	
Fiber	Eco Solution Q® Nylon	
Dye Method	100% Solution Dyed	
Backing Type	Ultraloc® + Non Skid Backing	
Edge Type	Yarn Serge	
	u.s.	metric
Product Size	6 ft x 9 ft	1.83 m x 2.74 m
Total Thickness	0.458 in	11.62 mm



Available Colorways



20100 Carrara  
5501D serge yarn color

20496 Colossal  
5236D serge yarn color

20518 Forge  
5598D serge yarn color

Performance + Testing

Pill Test	Pass*	*Pill test data is based on style 5A220
ADA Compliance	To achieve ADA compliance, the product must have a rubber tapered edge finish attached, a finished thickness of less than 0.5 inches, and affixed to the floor. Refer to local codes for additional information regarding the use of rugs in ADA compliant spaces.	

Warranties

5 Year Commercial Limited Warranty

Material Health & Environmental Certifications

Global Product Assessment	Country of Origin**   USA
---------------------------	---------------------------

Coordinating Products

---

- LVT: **Emerge**
- Carpet Tile: **Slab Tile, Honed Tile, Alchemy Tile, Form Tile**
- Broadloom: **Monolith Woven, Base Metal Woven, Strata, Fault**