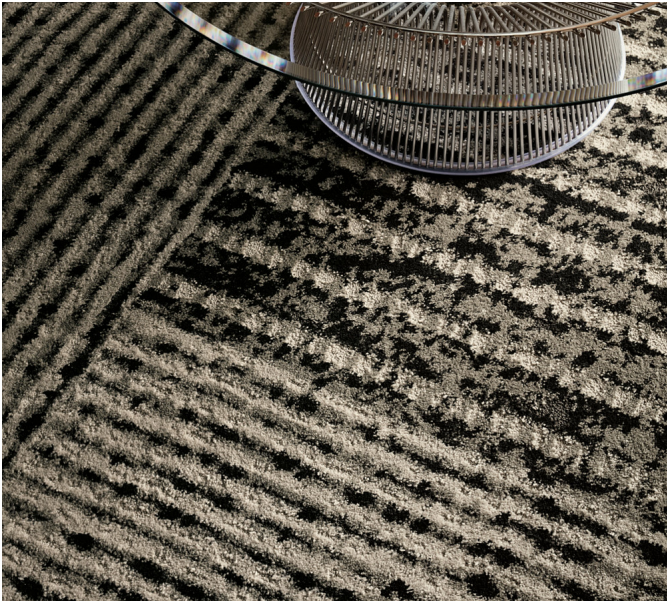
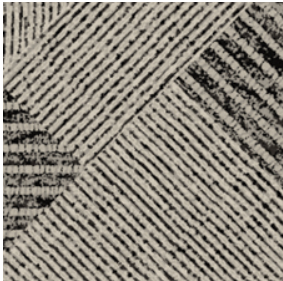


Join 12x15

|                 |                              |                 |
|-----------------|------------------------------|-----------------|
| Product Type    | Area Rug                     |                 |
| Collection      | Rugs                         |                 |
| Style Number    | G043R                        |                 |
| Construction    | Multi-Level Pattern Cut/Loop |                 |
| Fiber           | Eco Solution Q® Nylon        |                 |
| Dye Method      | 100% Solution Dyed           |                 |
| Backing Type    | Ultraloc® + Non Skid Backing |                 |
| Edge Type       | Yarn Serge                   |                 |
|                 | u.s.                         | metric          |
| Product Size    | 12 ft x 15 ft                | 3.66 m x 4.57 m |
| Total Thickness | 0.463 in                     | 11.75 mm        |



Available Colorways



68500 Smoke  
5656D serge yarn color

Performance + Testing

|                |  |   |
|----------------|--|---|
| Pill Test      | Pass*  | *Pill test data is based on style 5A268 |
| ADA Compliance | To achieve ADA compliance, the product must have a rubber tapered edge finish attached, a finished thickness of less than 0.5 inches, and affixed to the floor. Refer to local codes for additional information regarding the use of rugs in ADA compliant spaces. |   |

Warranties

5 Year Commercial Limited Warranty

Material Health & Environmental Certifications

|                           |                           |
|---------------------------|---------------------------|
| Global Product Assessment | Country of Origin**   USA |
|---------------------------|---------------------------|

