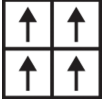


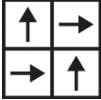
Zeal Tile Rug

Nom De Style	Carreaux De Tapis	
Collection	West Elm + Shaw Contract	
Numéro De Style	G300R	
Construction	Motif à Plusieurs Niveaux/Boucle De Coupe	
Méthode De Teinture	100% Teint EN Solution	
Endos Primaire	Synthétique	
Traitements Protecteur	Protection Des Sols SSP® Shaw	
	u.s.	metric
Dimensions Du Produit	24 in x 24 in	61 cm x 61 cm
Surface Par Carton	48 ft²	4.46 m²
Pièces Par Carton	12 pcs	
Jauge	1/10 in	39.4 per 10 cm
Compte De Mailles	7.0 per in	28.5 per 10 cm
Poids De La Fibre Touffetée	26 oz/yd²	881.5 g/m²

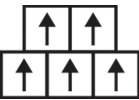
Méthodes d'Installation Conseillées



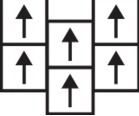
Monolithic



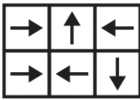
Quarter Turn



Brick



Ashlar



Random

Product is installed using LokWorx Tabs included in product packaging.

Spécifications Du Rendement + Tests Et Essai

Label Cri Green Label Plus (Glp)	GLP9968
Inflammabilité	Pass*

Garanties

Commerciale Limitée

Coordination Des Produits

Carpet Tile: **Stonework Tile, Chisel Tile, Grit Tile, Zest Tile, Zeal Tile, Spark Tile**
Broadloom: **Verve, Colca, Kista By Lindsay Stead, Stone, Flame, Shale, Diamonds**

Attributs + Certifications

Certifications Below Apply Exclusively To The Carpet Tile Rug Itself And Not The Lokworx Tabs Adhesive

Health & Wellbeing

Material Ingredient Transparency	Cradle to Cradle Certified® Silver Level (Version 4.0) Health Product Declaration (HPD) Divulgateion De 1 000 ppm Living Building Challenge (LBC) Exempt De Produits Chimiques De La Liste Rouge Declare Conforme LBC NSF 140 or CRI Green Label Plus (GLP) GLP9968
Indoor Air Quality	

Climate Impact

Environmental Product Declaration (EPD)	Certifié Par Une Tierce Partie Conformément Aux Normes ISO 14044, ISO 14025 Et EN 15804
Embodied Carbon (Cradle to Gate)	3.87 kg CO₂/m²
Life-Cycle Carbon Emissions	Low Embodied Carbon
Product Packaging	100% Recyclable

Global Product Assessment

	Singapore Green Label Agréé CE Marking (EN 14041) Certifié Par Un Tiers Environmental Guarantee* Re[turn] Reclamation Program* Pickup & Delivery Available Country of Origin** Imported
--	--

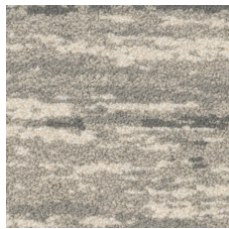
Well V2 Contribution Credit

X08 Réduction des matières dangereuses Partie 1 : Optimisation des limites des matières dangereuses – 1 pt	C2C Silver Level (Version 4.0)
--	---------------------------------------

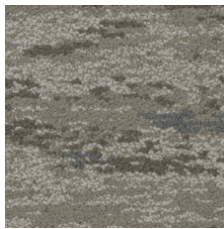
Contribution Au Certificat Vert Leed

« Crédit MR : Divulgateion et optimisation des produits de construction	3rd Party Certified in Accordance with ISO14044, ISO14025 & EN15804
« Crédit MR : Divulgateion et optimisation des produits de construction	C2C Silver Level (Version 4.0) or HPD (Version 2.1)
« Crédit MR : Divulgateion et optimisation des produits de construction	C2C Silver Level (Version 4.0)
« Crédit MR : Divulgateion et optimisation des produits de construction	Environmental Guarantee: Re[turn] Reclamation Program* Pickup & Delivery Available
Crédit EQ : matériaux faibles émissions	Green Label Plus Certification: GLP9968

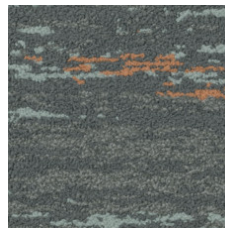
Available Colorways



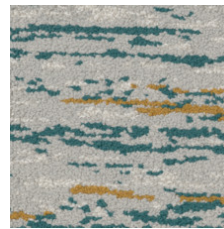
Flair 87100



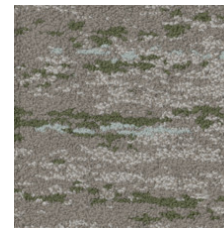
Vitality 87105



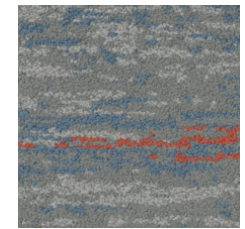
Flourish-Color 87326



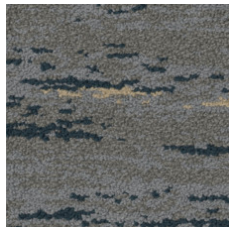
Vibrance-Color 87327



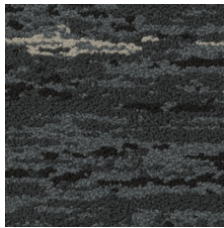
Vitality-Color 87375



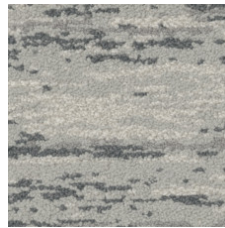
Moxie-Color 87411



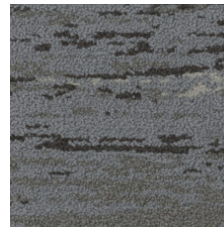
Brio-Color 87485



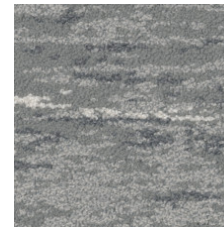
Gusto 87500



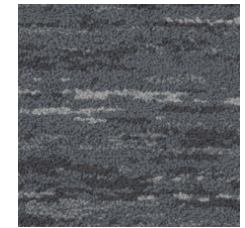
Vibrance 87510



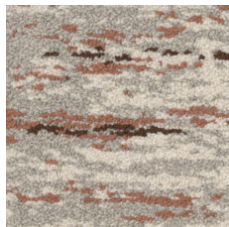
Brio 87518



Moxie 87535



Flourish 87580



Flair-Color 87675

Informations Supplémentaires

* To learn more about the recyclability of our products and our re[TURN], please visit shawcontract.com/sustainability.

**Meets or exceeds all local and national regulations in country of manufacture.

[Installation Guidelines](#)

[Maintenance Guidelines](#)

Specifications are subject to nominal manufacturing variance. Material supply and/or manufacturing processes may necessitate changes without notice.

This product is an exclusive design and may not be duplicated in any manner. Use of this design in the creation of another product design is also strictly prohibited.

Visit shawcontract.com/testing for more information.



Declare.



PVC-Free

Corporate Headquarters +1 800 257 7429 | +1 706 532 7984 | Atlanta +1 404 853 7429 | Bengaluru +91 80 6773 0202 | Beijing +86 10 6568 588 | Chicago +1 312 467 1331 | Dubai +971 4 584 6956 | Hong Kong +852 2623 0371 | London +44 207 961 4120 | Los Angeles +1 800 233 1614 | Melbourne +61 3 9939 8543 | Mexico City +55 5010 7600 | Mumbai +91 22 6284 5050 | Nantong +86 400 800 7429 | New York +1 212 953 7429 | Paris +33 (0) 1 81 22 44 39 | San Francisco +1 415 955 1920 | Shanghai +86 21 3338 4000 | Singapore +65 6733 1811 | Sydney +61 800 556 302

© 2025 Shaw Industries Group, Inc., a Berkshire Hathaway Company
July 19, 2025

3 of 3