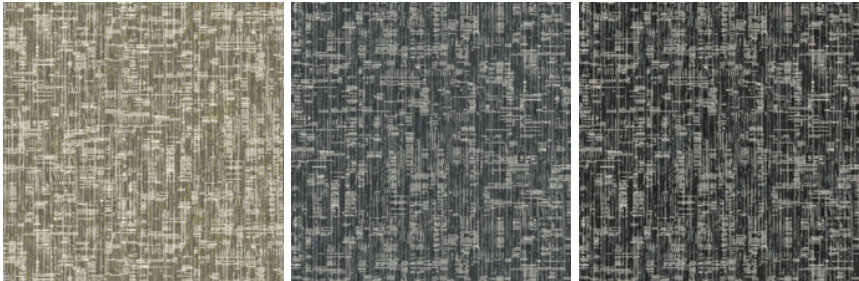


Breakin 8x10

Nom De Style	Tapis	
Collection	Mike Ford + Shaw Contract	
Numéro De Style	G320R	
Fibre	Ecosolution Q® Nylon	
Méthode De Teinture	100% Teint EN Solution	
Backing Type	Ultraloc® + Endos Antidérapant	
Edge Type	Yarn Serge	
	u.s.	metric
Dimensions Du Produit	8 ft x 10 ft	2.44 m x 3.05 m
Poids De La Fibre	0.520 in	13.2 mm
Touffetée		



Available Colorways



85100 Foundation  
6046 serge yarn color

85535 Flow  
5365D serge yarn color

85580 Vibe  
5500D serge yarn color

Spécifications Du Rendement + Tests Et Essai

Inflamabilité	Pass*	*Pill test data is based on style 5A385
---------------	-------	---

Garanties

Limitée Commerciale De 5 Ans

Attributs + Certifications

Health & Wellbeing

Indoor Air Quality

CRI Green Label Plus (GLP) | GLP8472

Climate Impact

Product Packaging

100% Recyclable

Global Product Assessment

Country of Origin\*\* | Imported

### Coordination Des Produits

---

Broadloom: **Breakin, Djing, Emcee, Graffiti, Knowledge**

### Informations Supplémentaires

---

\*\*Meets or exceeds all local and national regulations in country of manufacture. (Manufactured in an ISO 9001 & ISO 14001 certified facility or equivalent)

[Maintenance Guidelines](#)



## PVC-Free

Corporate Headquarters +1 800 257 7429 | +1 706 532 7984 | Atlanta +1 404 853 7429 | Bengaluru +91 80 6773 0202 | Beijing +86 10 6568 588 | Chicago +1 312 467 1331 | Dubai +971 4 584 6956 | Hong Kong +852 2623 0371 | Latin America (Miami) +1 305 827 5912 | London +44 207 961 4120 | Los Angeles +1 800 233 1614 | Melbourne +61 3 9939 8543 | Mexico City +55 5010 7600 | Mumbai +91 22 6284 5050 | Nantong +86 400 800 7429 | New York +1 212 953 7429 | Paris +33 (0) 1 81 22 44 39 | San Francisco +1 415 955 1920 | Santiago +562 2431 5000 x 550 | São Paulo +55 11 3071 1702 | Shanghai +86 21 3338 4000 | Singapore +65 6733 1811 | Sydney +61 800 556 302