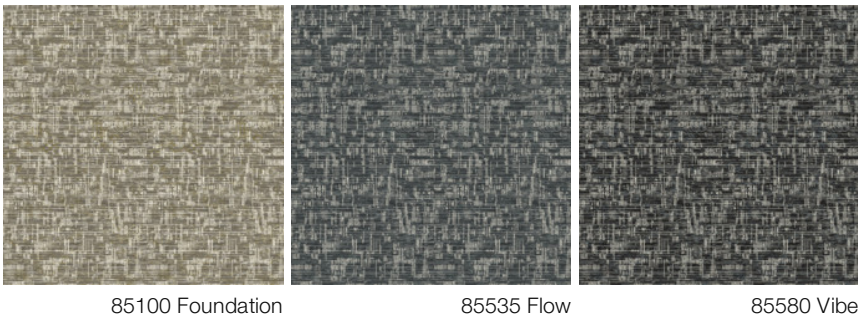


Breakin 12x15 Hidden Edge

| | | |
|-----------------|------------------------------|-----------------|
| Product Type | Area Rug | |
| Collection | Mike Ford + Shaw Contract | |
| Style Number | G323R | |
| Fiber | Ecosolution Q® Nylon | |
| Dye Method | 100% Solution Dyed | |
| Backing Type | Ultraloc® + Non Skid Backing | |
| Edge Type | Hidden Edge | |
| | U.S. | metric |
| Product Size | 12 ft x 15 ft | 3.66 m x 4.57 m |
| Total Thickness | 0.520 in | 13.2 mm |

Available Colorways



Data + Testing

| | | |
|-----------|-------|---|
| Pill Test | Pass* | *Pill test data is based on style 5A385 |
|-----------|-------|---|

Warranties

5 Year Commercial Limited

Material Health & Environmental Certifications

| | |
|---------------------------|--------------------------------------|
| Health & Wellbeing | CRI Green Label Plus (GLP) GLP8472 |
| Indoor Air Quality | |
| Climate Impact | 100% Recyclable |
| Product Packaging | |
| Global Product Assessment | Country of Origin** USA |

Additional Information

**Meets or exceeds all local and national regulations in country of manufacture. (Manufactured in an ISO 9001 & ISO 14001 certified facility or equivalent)

Maintenance Guidelines

Coordinating Products

Broadloom: **Breakin, Djing, Emcee, Graffiti, Knowledge**



PVC-Free