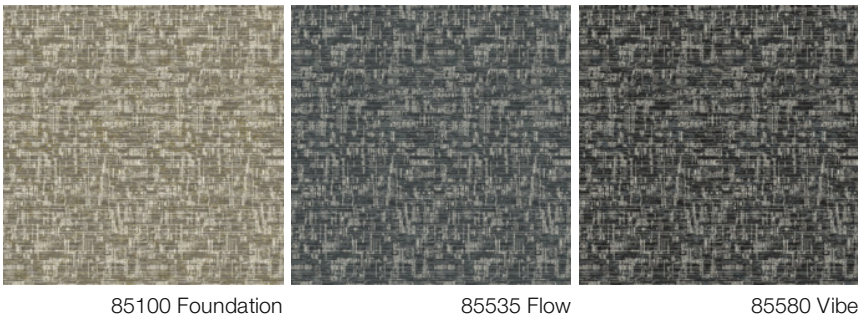


Breakin 12x15 Hidden Edge

Tipo De Producto	Tapetes De área	
Colección	Mike Ford + Shaw Contract	
Número De Estilo	G323R	
Fibra	Ecosolution Q® Nylon	
Método De Teñido	100% Solution Dyed	
Backing Type	Ultraloc® + Base Antideslizante	
Edge Type	Hidden Edge	
	U.S.	metric
Tamaño Del Producto	12 ft x 15 ft	3.66 m x 4.57 m
Espesor Total	0.520 in	13.2 mm

Available Colorways



Datos + Pruebas

Prueba De Pastillas (Pill)	Pass*	*Pill test data is based on style 5A385
----------------------------	-------	-----------------------------------------

Garantías

5 Años Limitado A USO Comercial

Atributos + Certificaciones

Health & Wellbeing	CRI Green Label Plus (GLP) GLP8472
Indoor Air Quality	
Climate Impact	
Product Packaging	100% Reciclable
Global Product Assessment	Country of Origin** Imported

Información Adicional

**Meets or exceeds all local and national regulations in country of manufacture. (Manufactured in an ISO 9001 & ISO 14001 certified facility or equivalent)

Maintenance Guidelines

Productos Que Combinan

Broadloom: **Breakin, Djing, Emcee, Graffiti, Knowledge**



PVC-Free