

Knowledge 11x11 Circular

|                 |                              |                 |
|-----------------|------------------------------|-----------------|
| Product Type    | Area Rug                     |                 |
| Collection      | Mike Ford + Shaw Contract    |                 |
| Style Number    | G355R                        |                 |
| Fibre           | Ecosolution Q® Nylon         |                 |
| Dye Method      | 100% Solution Dyed           |                 |
| Backing Type    | Ultraloc® + Non Skid Backing |                 |
| Edge Type       | Yarn Serge                   |                 |
|                 | u.s.                         | metric          |
| Product Size    | 11 ft x 11 ft                | 3.35 m x 3.35 m |
| Total Thickness | 0.515 in                     | 13.07 mm        |



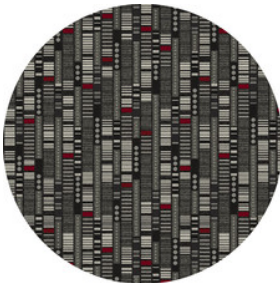
Available Colorways



89100 Foundation  
6046 serge yarn color



89535 Flow  
5365D serge yarn color



89580 Vibe  
5500D serge yarn color

Data + Testing

|           |       |   |
|-----------|-------|---|
| Pill Test | Pass* | *Pill test data is based on style 5A389 |
|-----------|-------|---|

Warranties

5 Year Commercial Limited

Attributes + Certifications

Health & Wellbeing

Indoor Air Quality

CRI Green Label Plus (GLP) | GLP8472

Climate Impact

Product Packaging

100% Recyclable

Global Product Assessment

Country of Origin\*\* | USA

### Coordinating Products

---

Broadloom: **Breakin, Djing, Emcee, Graffiti, Knowledge**

### Additional Information

---

\*\*Meets or exceeds all local and national regulations in country of manufacture. (Manufactured in an ISO 9001 & ISO 14001 certified facility or equivalent)

Maintenance Guidelines



## PVC-Free

Corporate Headquarters +1 800 257 7429 | +1 706 532 7984 | Atlanta +1 404 853 7429 | Bengaluru +91 80 6773 0202 | Beijing +86 10 6568 588 | Chicago +1 312 467 1331 | Dubai +971 4 584 6956 | Hong Kong +852 2623 0371 | Latin America (Miami) +1 305 827 5912 | London +44 207 961 4120 | Los Angeles +1 800 233 1614 | Melbourne +61 3 9939 8543 | Mexico City +55 5010 7600 | Mumbai +91 22 6284 5050 | Nantong +86 400 800 7429 | New York +1 212 953 7429 | Paris +33 (0) 1 81 22 44 39 | San Francisco +1 415 955 1920 | Santiago +562 2431 5000 x 550 | São Paulo +55 11 3071 1702 | Shanghai +86 21 3338 4000 | Singapore +65 6733 1811 | Sydney +61 800 556 302

© 2024 Shaw Industries Group, Inc., a Berkshire Hathaway Company  
November 21, 2024

2 of 2