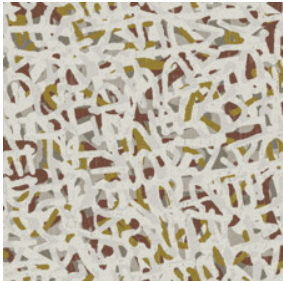


Graffiti 6x9 Hidden Edge

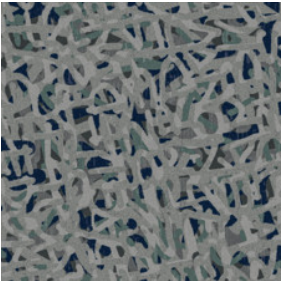
Product Type	Area Rug	
Collection	Mike Ford + Shaw Contract	
Style Number	G342R	
Construction	Multi Level Pattern Cut/Loop	
Fiber	Ecosolution Q® Nylon	
Dye Method	100% Solution Dyed	
Backing Type	Ultraloc® + Non Skid Backing	
Edge Type	Hidden Edge	
	u.s.	metric
Product Size	6 ft x 9 ft	1.83 m x 2.74 m
Total Thickness	0.518 in	13.14 mm



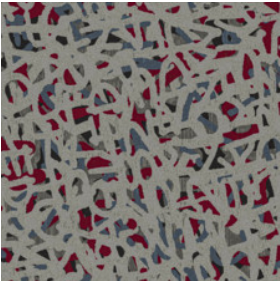
Available Colorways



88100 Foundation
910 hidden edge color



88535 Flow
167 hidden edge color



88580 Vibe
167 hidden edge color

Performance + Testing

Pill Test	Pass*	*Pill test data is based on style 5A388
ADA Compliance	To achieve ADA compliance, the product must have a rubber tapered edge finish attached, a finished thickness of less than 0.5 inches, and affixed to the floor. Refer to local codes for additional information regarding the use of rugs in ADA compliant spaces.	

Warranties

5 Year Commercial Limited Warranty

Diversity & Inclusion

We believe all humans are equal. Individually and collectively, we need to proactively create and promote opportunities that give everybody an equal footing in life. We nurture an environment where every voice and perspective can be heard, and proactively promote accessibility and inclusivity inside our network and beyond. One proof point is our ability to meet the criteria of the Social Fairness pillar of the Cradle to Cradle Product Standard. At Shaw Industries, we promote supplier participation that is reflective of Shaw's diverse customer base and local community. More than 42% of our spend***** is with small and diverse businesses. We believe having a strong Supplier Diversity Program is strategic for bringing more innovation to our businesses and opening new markets for growth.

Coordinating Products

Broadloom: **Breakin, Djing, Emcee, Graffiti, Knowledge**

Material Health & Environmental Certifications

Health & Wellbeing

Indoor Air Quality

CRI Green Label Plus (GLP) | GLP8472

Climate Impact

Product Packaging

100% Recyclable

Global Product Assessment

Country of Origin** | USA

Additional Information

**Meets or exceeds all local and national regulations in country of manufacture. (Manufactured in an ISO 9001 & ISO 14001 certified facility or equivalent)

[Maintenance Guidelines](#)

