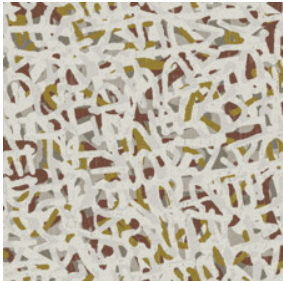


Graffiti 6x9 Hidden Edge

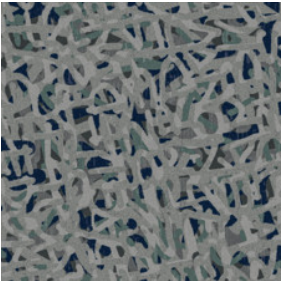
Nom De Style	Tapis	
Collection	Mike Ford + Shaw Contract	
Numéro De Style	G342R	
Fibre	Ecosolution Q® Nylon	
Méthode De Teinture	100% Teint EN Solution	
Backing Type	Ultraloc® + Endos Antidérapant	
Edge Type	Hidden Edge	
	u.s.	metric
Dimensions Du Produit	6 ft x 9 ft	1.83 m x 2.74 m
Poids De La Fibre	0.518 in	13.14 mm
Touffetée		



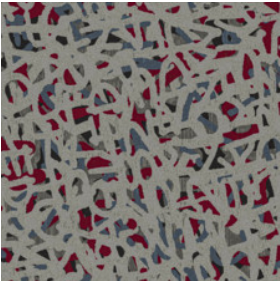
Available Colorways



88100 Foundation
910 hidden edge color



88535 Flow
167 hidden edge color



88580 Vibe
167 hidden edge color

Spécifications Du Rendement + Tests Et Essai

Inflammabilité	Pass*	*Pill test data is based on style 5A388
----------------	--------------	---

Garanties

Limitée Commerciale De 5 Ans

Attributs + Certifications

Health & Wellbeing	CRI Green Label Plus (GLP) GLP8472
Indoor Air Quality	
Climate Impact	100% Recyclable
Product Packaging	
Global Product Assessment	Country of Origin** Imported

Coordination Des Produits

Broadloom: **Breakin, Djing, Emcee, Graffiti, Knowledge**

Informations Supplémentaires

**Meets or exceeds all local and national regulations in country of manufacture. (Manufactured in an ISO 9001 & ISO 14001 certified facility or equivalent)

[Maintenance Guidelines](#)



PVC-Free

Corporate Headquarters +1 800 257 7429 | +1 706 532 7984 | Atlanta +1 404 853 7429 | Bengaluru +91 80 6773 0202 | Beijing +86 10 6568 588 | Chicago +1 312 467 1331 | Dubai +971 4 584 6956 | Hong Kong +852 2623 0371 | Latin America (Miami) +1 305 827 5912 | London +44 207 961 4120 | Los Angeles +1 800 233 1614 | Melbourne +61 3 9939 8543 | Mexico City +55 5010 7600 | Mumbai +91 22 6284 5050 | Nantong +86 400 800 7429 | New York +1 212 953 7429 | Paris +33 (0) 1 81 22 44 39 | San Francisco +1 415 955 1920 | Santiago +562 2431 5000 x 550 | São Paulo +55 11 3071 1702 | Shanghai +86 21 3338 4000 | Singapore +65 6733 1811 | Sydney +61 800 556 302