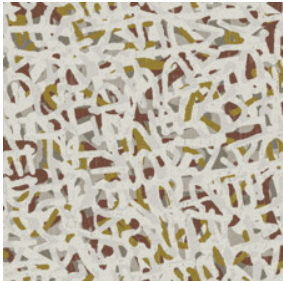


Graffiti 6x9

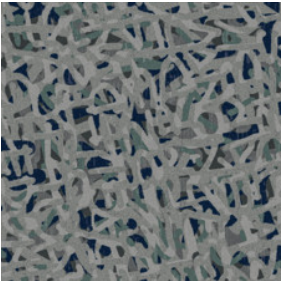
Product Type	Area Rug	
Collection	Mike Ford + Shaw Contract	
Style Number	G341R	
Construction	Multi-Level Pattern Cut/ Loop	
Fiber	Ecosolution Q® Nylon	
Dye Method	100% Solution Dyed	
Backing Type	Ultraloc® + Non Skid Backing	
Edge Type	Yarn Serge	
	u.s.	metric
Product Size	6 ft x 9 ft	1.83 m x 2.74 m
Total Thickness	0.518 in	13.14 mm



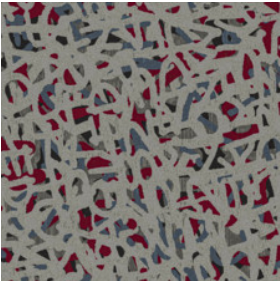
Available Colorways



88100 Foundation
6046 serge yarn color



88535 Flow
5365D serge yarn color



88580 Vibe
5500D serge yarn color

Performance + Testing

Pill Test

Pass*

*Pill test data is based on style 5A388

ADA Compliance

To achieve ADA compliance, the product must have a rubber tapered edge finish attached, a finished thickness of less than 0.5 inches, and affixed to the floor. Refer to local codes for additional information regarding the use of rugs in ADA compliant spaces.

Warranties

5 Year Commercial Limited Warranty

Diversity & Inclusion

We believe all humans are equal. Individually and collectively, we need to proactively create and promote opportunities that give everybody an equal footing in life. We nurture an environment where every voice and perspective can be heard, and proactively promote accessibility and inclusivity inside our network and beyond. One proof point is our ability to meet the criteria of the Social Fairness pillar of the Cradle to Cradle Product Standard. At Shaw Industries, we promote supplier participation that is reflective of Shaw's diverse customer base and local community. More than 42% of our spend***** is with small and diverse businesses. We believe having a strong Supplier Diversity Program is strategic for bringing more innovation to our businesses and opening new markets for growth.

Corporate Headquarters +1 800 257 7429 | +1 706 532 7984 | Atlanta +1 404 853 7429 | Bengaluru +91 80 6773 0202 | Beijing +86 10 6568 588 | Chicago +1 312 467 1331 | Dubai +971 4 584 6956 | Hong Kong +852 2623 0371 | Latin America (Miami) +1 305 827 5912 | London +44 207 961 4120 | Los Angeles +1 800 233 1614 | Melbourne +61 3 9939 8543 | Mexico City +55 5010 7600 | Mumbai +91 22 6284 5050 | Nantong +86 400 800 7429 | New York +1 212 953 7429 | Paris +33 (0) 1 81 22 44 39 | San Francisco +1 415 955 1920 | Santiago +562 2431 5000 x 550 | São Paulo +55 11 3071 1702 | Shanghai +86 21 3338 4000 | Singapore +65 6733 1811 | Sydney +61 800 556 302

© 2024 Shaw Industries Group, Inc., a Berkshire Hathaway Company
November 24, 2024

1 of 2

Coordinating Products

Broadloom: Breakin, Djing, Emcee, Graffiti, Knowledge

Material Health & Environmental Certifications

Health & Wellbeing

Indoor Air Quality

CRI Green Label Plus (GLP) | GLP8472

Climate Impact

Product Packaging

100% Recyclable

Global Product Assessment

Country of Origin** | USA

Additional Information

**Meets or exceeds all local and national regulations in country of manufacture. (Manufactured in an ISO 9001 & ISO 14001 certified facility or equivalent)

[Maintenance Guidelines](#)

