

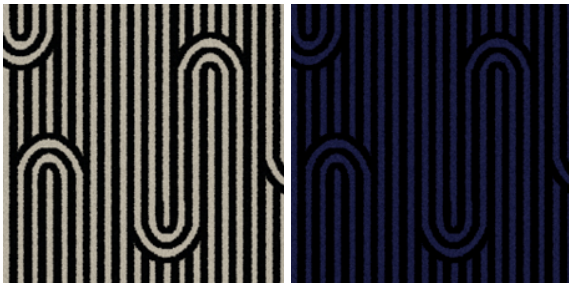
# ShawContract®

## Swerve 11x11 Circular

Product Type	<b>Area Rug</b>	
Collection	<b>Rugs</b>	
Style Number	<b>G209R</b>	
Construction	<b>Multi-Level Pattern/Cut Loop</b>	
Fiber	<b>Ecosolution Q® Nylon</b>	
Dye Method	<b>100% Solution Dyed</b>	
Backing Type	<b>Ultraloc® + Non Skid Backing</b>	
Edge Type	<b>Hidden Edge</b>	
	u.s.	metric
Product Size	<b>11 ft x 11 ft</b>	<b>3.35 m x 3.35 m</b>
Total Thickness	<b>0.443 in</b>	<b>11.24 mm</b>



### Available Colorways



75500 High  
995 hidden edge color

75508 Low  
995 hidden edge color

### Data + Testing

Pill Test	<b>Pass*</b>	*Pill test data is based on style 5A275
Wear Rating (Astm D5252)	<b>Heavy</b>	

### Warranties

[5 year commercial limited](#)

### Material Health & Environmental Certifications

#### Health & Wellbeing

Indoor Air Quality

**CRI Green Label Plus (GLP) | GLP8472**

#### Climate Impact

Product Packaging

**100% Recyclable**

#### Global Product Assessment

**Country of Origin\*\* | USA**

Corporate Headquarters +1 800 257 7429 | +1 706 532 7984 | Atlanta +1 404 853 7429 | Bengaluru +91 80 6773 0202 | Beijing +86 10 6568 588 | Chicago +1 312 467 1331 | Dubai +971 4 584 6956 | Hong Kong +852 2623 0371 | London +44 207 961 4120 | Los Angeles +1 800 233 1614 | Melbourne +61 3 9939 8543 | Mexico City +55 5010 7600 | Mumbai +91 22 6284 5050 | Nantong +86 400 800 7429 | New York +1 212 953 7429 | Paris +33 (0) 1 81 22 44 39 | San Francisco +1 415 955 1920 | Shanghai +86 21 3338 4000 | Singapore +65 6733 1811 | Sydney +61 800 556 302

© 2026 Shaw Industries Group, Inc., a Berkshire Hathaway Company  
May 2, 2026

1 of 2

## Additional Information

---

\*\*Meets or exceeds all local and national regulations in country of manufacture. (Manufactured in an ISO 9001 & ISO 14001 certified facility or equivalent)  
[maintenance guidelines](#)



## PVC-Free

Corporate Headquarters +1 800 257 7429 | +1 706 532 7984 | Atlanta +1 404 853 7429 | Bengaluru +91 80 6773 0202 | Beijing +86 10 6568 588 | Chicago +1 312 467 1331 | Dubai +971 4 584 6956 | Hong Kong +852 2623 0371 | London +44 207 961 4120 | Los Angeles +1 800 233 1614 | Melbourne +61 3 9939 8543 | Mexico City +55 5010 7600 | Mumbai +91 22 6284 5050 | Nantong +86 400 800 7429 | New York +1 212 953 7429 | Paris +33 (0) 1 81 22 44 39 | San Francisco +1 415 955 1920 | Shanghai +86 21 3338 4000 | Singapore +65 6733 1811 | Sydney +61 800 556 302

© 2026 Shaw Industries Group, Inc., a Berkshire Hathaway Company  
May 2, 2026

2 of 2