

Embrace 12x15

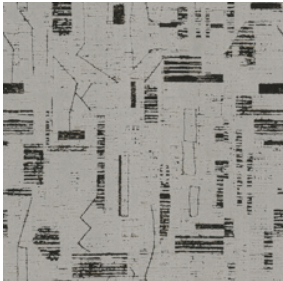
| | | |
|-----------------|------------------------------|-----------------|
| Product Type | Area Rug | |
| Collection | Community | |
| Style Number | G235R | |
| Construction | Multi-Level Pattern Cut/Loop | |
| Fiber | Eco Solution Q® Nylon | |
| Dye Method | 100% Solution Dyed | |
| Backing Type | Ultraloc® + Non Skid Backing | |
| Edge Type | Hidden Edge | |
| | u.s. | metric |
| Product Size | 12 ft x 15 ft | 3.66 m x 4.57 m |
| Total Thickness | 0.484 in | 12.28 mm |



Available Colorways



1100 High Atlas
910 hidden edge color



1105 Tradition
910 hidden edge color



1500 Skoura
995 hidden edge color



1555 Berber
167 hidden edge color



1580 Marrakesh
167 hidden edge color

Performance + Testing

| | | |
|----------------|--|---|
| Pill Test | Pass* | *Pill test data is based on style 4V483 |
| ADA Compliance | To achieve ADA compliance, the product must have a rubber tapered edge finish attached, a finished thickness of less than 0.5 inches, and affixed to the floor. Refer to local codes for additional information regarding the use of rugs in ADA compliant spaces. | |

Warranties

5 Year Commercial Limited Warranty

Material Health & Environmental Certifications

| | |
|---------------------------|---------------------------|
| Global Product Assessment | Country of Origin** USA |
|---------------------------|---------------------------|

Coordinating Products

- COREtec: **Inclusive, Expression**
- Carpet Tile: **Knotted Tile, Process Tile, Back Weave Tile, Exchange Tile, Heddle Tile, Flat Weave Tile**
- Broadloom: **Embrace, Share**